

- CADASTRAL -

17-0726

Plot Date: September 19, 2002

Revision Date:



LEGEND:

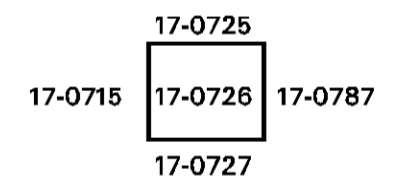
	Parcel Lines		County Parcel
	Lot Lines		Parcels Outside Landlot
	City Limit Lines		Undefined Parcels
	ROW Lines		
	School Exempt		

25 - Parcel No.
13 - Lot/Suite No.
360 - Address

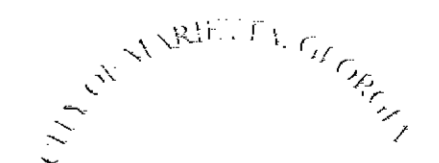
DISCLAIMER NOTE: This map is prepared for the inventory of real property found within this jurisdiction and is compiled from aerial photography, recorded deeds, plats, and other imagery, data and public records. Users of this map are hereby notified that the aforementioned primary public information sources should be consulted for verification of the information contained on this map. This jurisdiction, and the mapping companies involved in preparing it, assume no legal responsibilities for the information contained on this map.

Coordinate System based on Georgia State Plane System.
West Zone - NAD83

TILES:

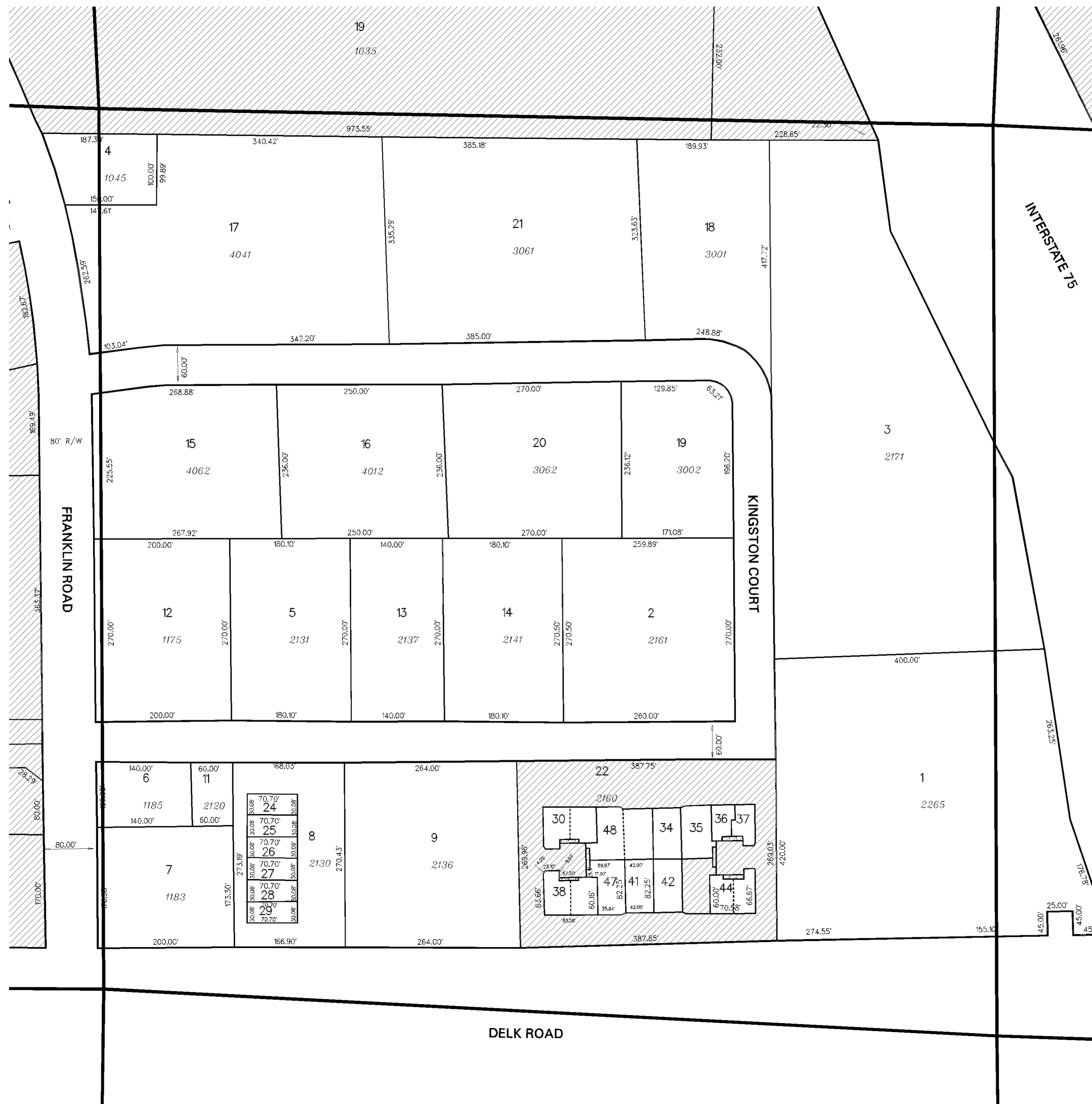


SCALE 1"=100'



City of Marietta, Georgia
- GIS Department -

205 Lawrence Street - Marietta, Georgia - 30060



70.70'	70.70'	24
30.08'	30.08'	25
70.70'	70.70'	26
30.08'	30.08'	27
70.70'	70.70'	28
30.08'	30.08'	29