

# TAX MAP 16-1156

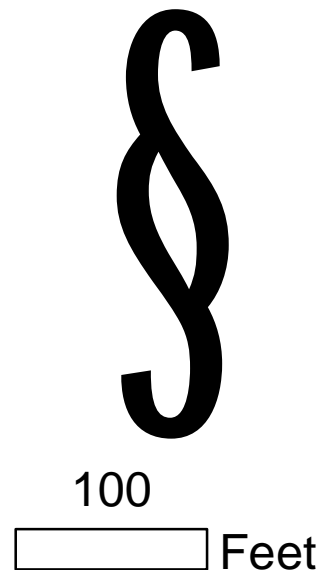
Plot Date: Jun 22, 2005

**Legend**

- Parcel Lines
- Creek Parcel Lines
- City Limit Lines
- ROW Lines
- School Tax Exempt
- Parcels Inside Landlot
- Parcels Outside Landlot
- Cobb County Parcels
- Unidentified Parcels

Reference Area:

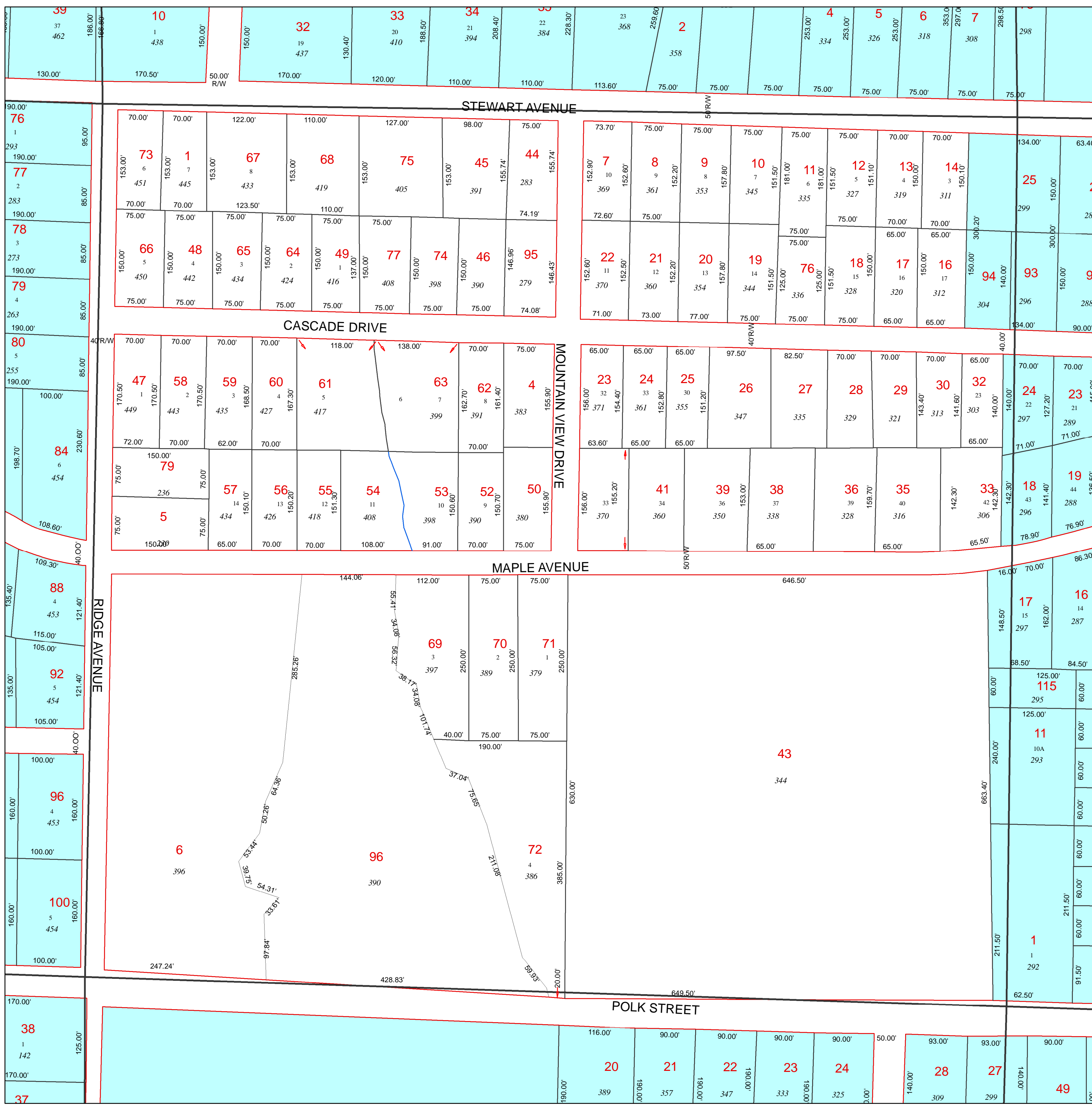
16-1150	16-1149	16-1148
16-1155	16-1156	16-1157
16-1222	16-1221	16-1220



**DISCLAIMER NOTE:** This map is prepared for the inventory of real property found within this jurisdiction and is compiled from aerial photography, recorded deeds, plats, and other imagery, data and public records. Users of this map are hereby notified that the aforementioned primary public information sources should be consulted for verification of the information contained on this map. This jurisdiction, and the mapping companies involved in preparing it, assume no legal responsibilities for the information contained on this map.

Coordinate System based on Georgia State Plane System.  
West Zone - NAD83

**Marietta**  
GIS Department  
205 Lawrence Street - Marietta, Georgia 30060  
[www.mariettaga.gov](http://www.mariettaga.gov)



D

D