










TAX MAP 17-0579

Plot Date: September 20, 2010

Legend

-  Parcel Lines
-  Creek Parcel Lines
-  City Limit Lines
-  ROW Lines
-  School Tax Exempt
-  Parcels Inside Landlot
-  Parcels Outside Landlot
-  Cobb County Parcels
-  Unidentified Parcels

Reference Area:

17-0575	17-0578	17-0647
17-0574	17-0579	17-0646
17-0573	17-0580	17-0645



1 = 100 Feet

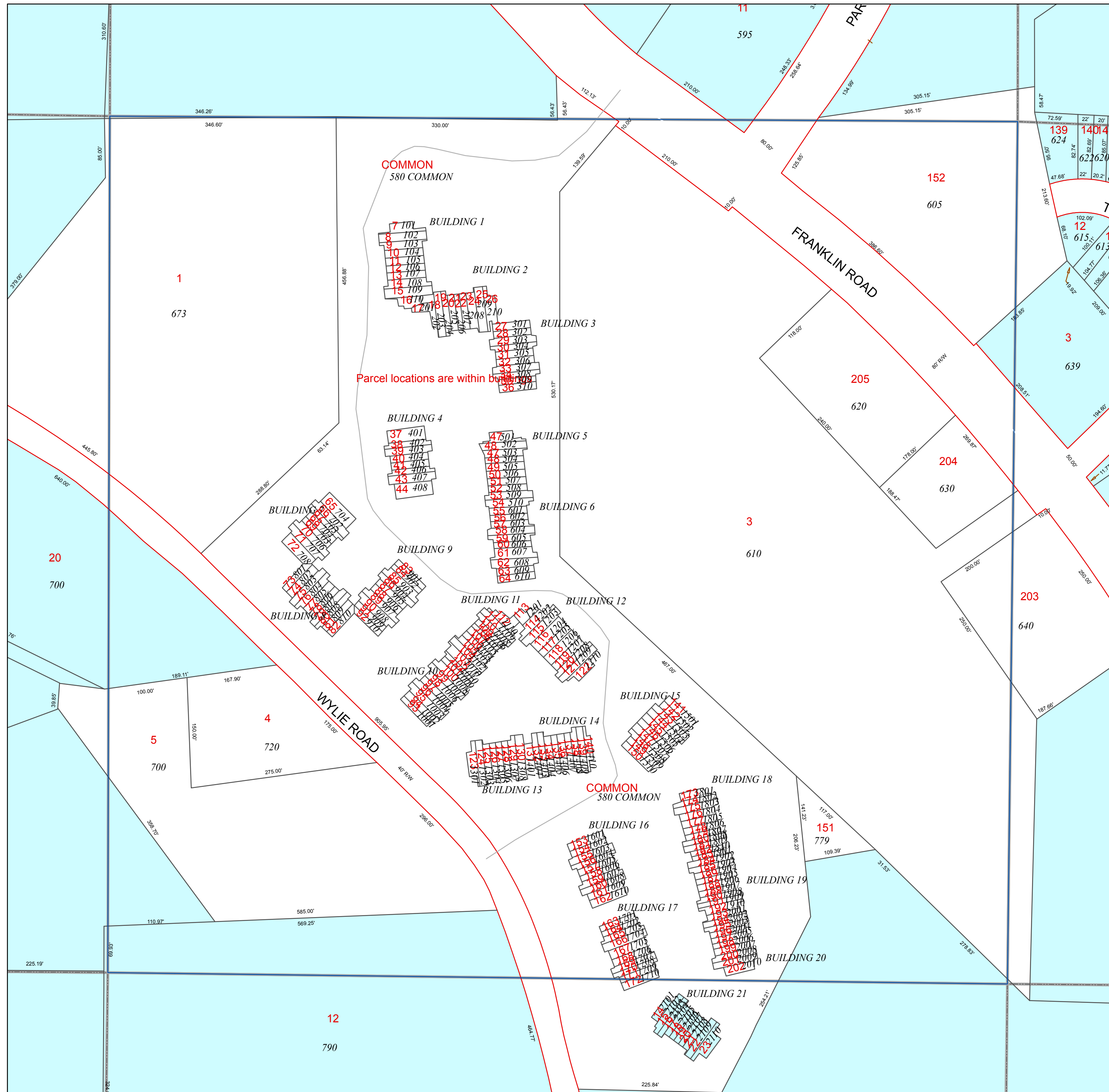


DISCLAIMER NOTE: This map is prepared for the inventory of real property found within this jurisdiction and is compiled from aerial photography, recorded deeds, plats, and other imagery, data and public records. Users of this map are hereby notified that the aforementioned primary public information sources should be consulted for verification of the information contained on this map. This jurisdiction, and the mapping companies involved in preparing it, assume no legal responsibilities for the information contained on this map.

Coordinate System based on Georgia State Plane System.
West Zone - NAD83



GIS Department
205 Lawrence Street - Marietta, Georgia 30060
www.mariettaga.gov



Parcel locations are within building footprints