









# TAX MAP

# 16-1212

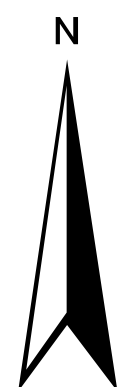
Plot Date: May 2, 2013

### Legend

-  Parcel Lines
-  Creek Parcel Lines
-  City Limit Lines
-  ROW Lines
-  School Tax Exempt
-  Parcels Inside Landlot
-  Parcels Outside Landlot
-  Cobb County Parcels
-  Unidentified Parcels

### Reference Area:

16-1164	16-1165	16-1166
16-1213	16-1212	16-1211
16-1236	16-1237	16-1238



1 = 100 Feet

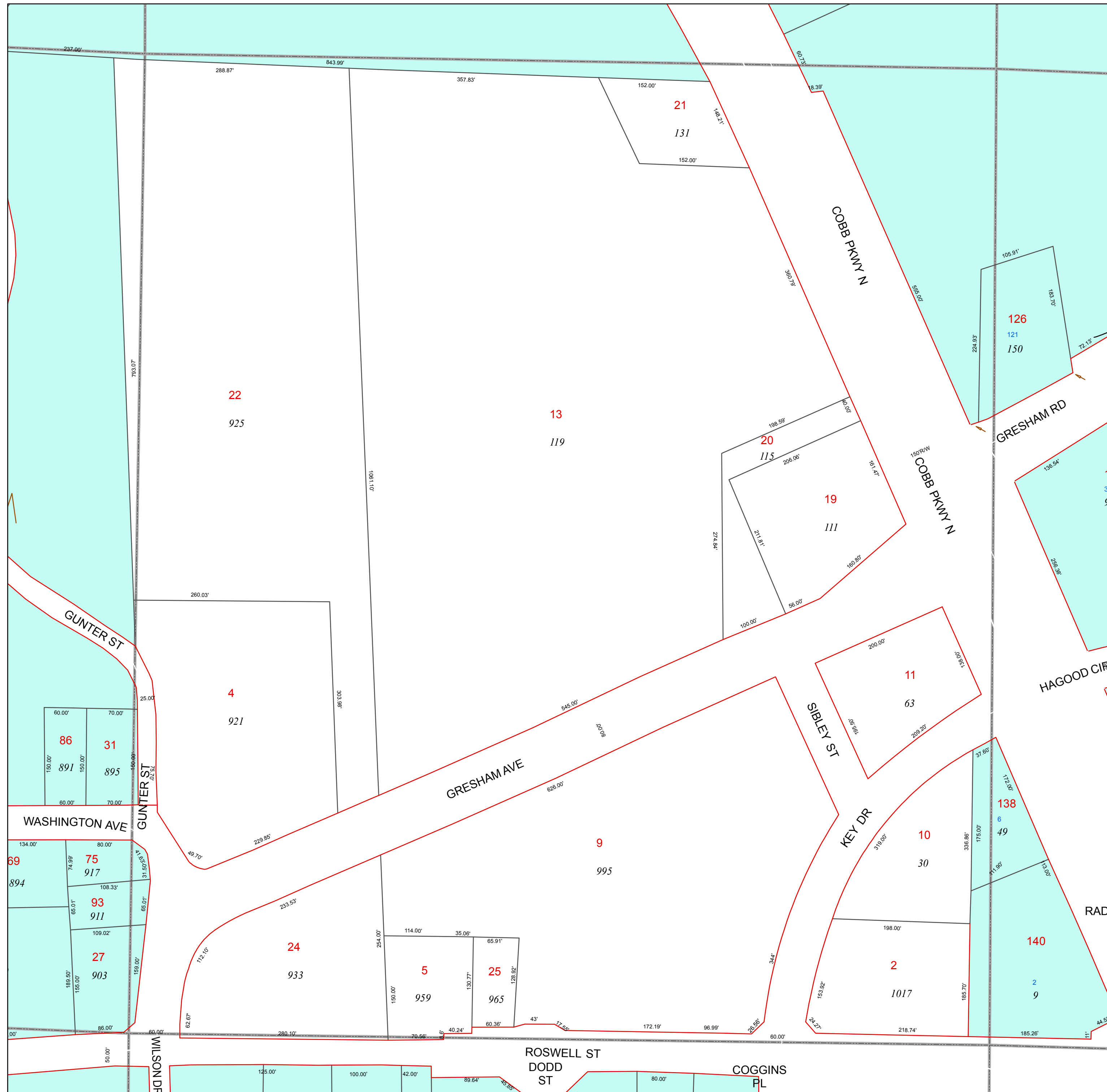
**DISCLAIMER NOTE:** This map is prepared for the inventory of real property found within this jurisdiction and is compiled from aerial photography, recorded deeds, plats, and other imagery, data and public records. Users of this map are hereby notified that the aforementioned primary public information sources should be consulted for verification of the information contained on this map. This jurisdiction, and the mapping companies involved in preparing it, assume no legal responsibilities for the information contained on this map.

Coordinate System based on Georgia State Plane System.  
West Zone - NAD83



GIS Department  
205 Lawrence Street - Marietta, Georgia 30060

[www.mariettaga.gov](http://www.mariettaga.gov)



X

X