

# TAX MAP

# 16-1138

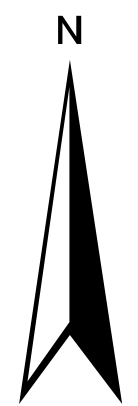
Plot Date: April 27, 2023

### Legend

- Parcel Lines
- City Limit Lines
- ROW Lines
- School Tax Exempt
- Parcels Inside Land Lot
- Parcels Outside Land Lot
- Parcels Outside City Limits
- Unidentified Parcels

### Reference Area:

16-1094	16-1095	16-1096
16-1133	16-1138	16-1137
16-1166	16-1167	16-1168



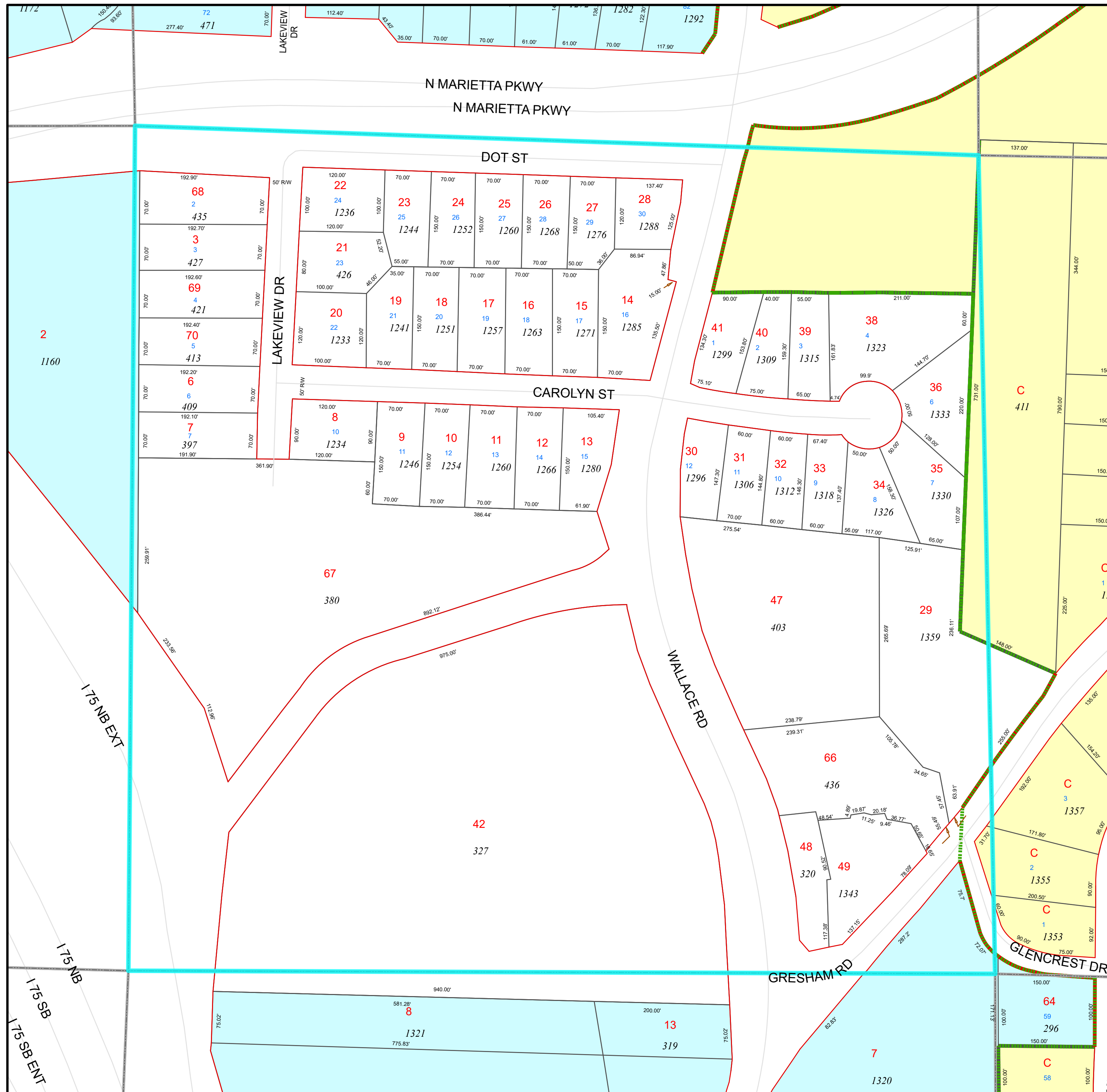
1 Inch = 100 Feet

**DISCLAIMER NOTE:** This map is prepared for the inventory of real property found within this jurisdiction and is compiled from aerial photography, recorded deeds, plats, and other imagery, data and public records. Users of this map are hereby notified that the aforementioned primary public information sources should be consulted for verification of the information contained on this map. This jurisdiction, and the mapping companies involved in preparing it, assume no legal responsibilities for the information contained on this map.

Coordinate System based on Georgia State Plane System. West Zone - NAD83

**CITY OF**  
*Marietta*  
**GEORGIA**

GIS Department  
205 Lawrence Street - Marietta, Georgia 30060  
[www.mariettaga.gov](http://www.mariettaga.gov)



X

X