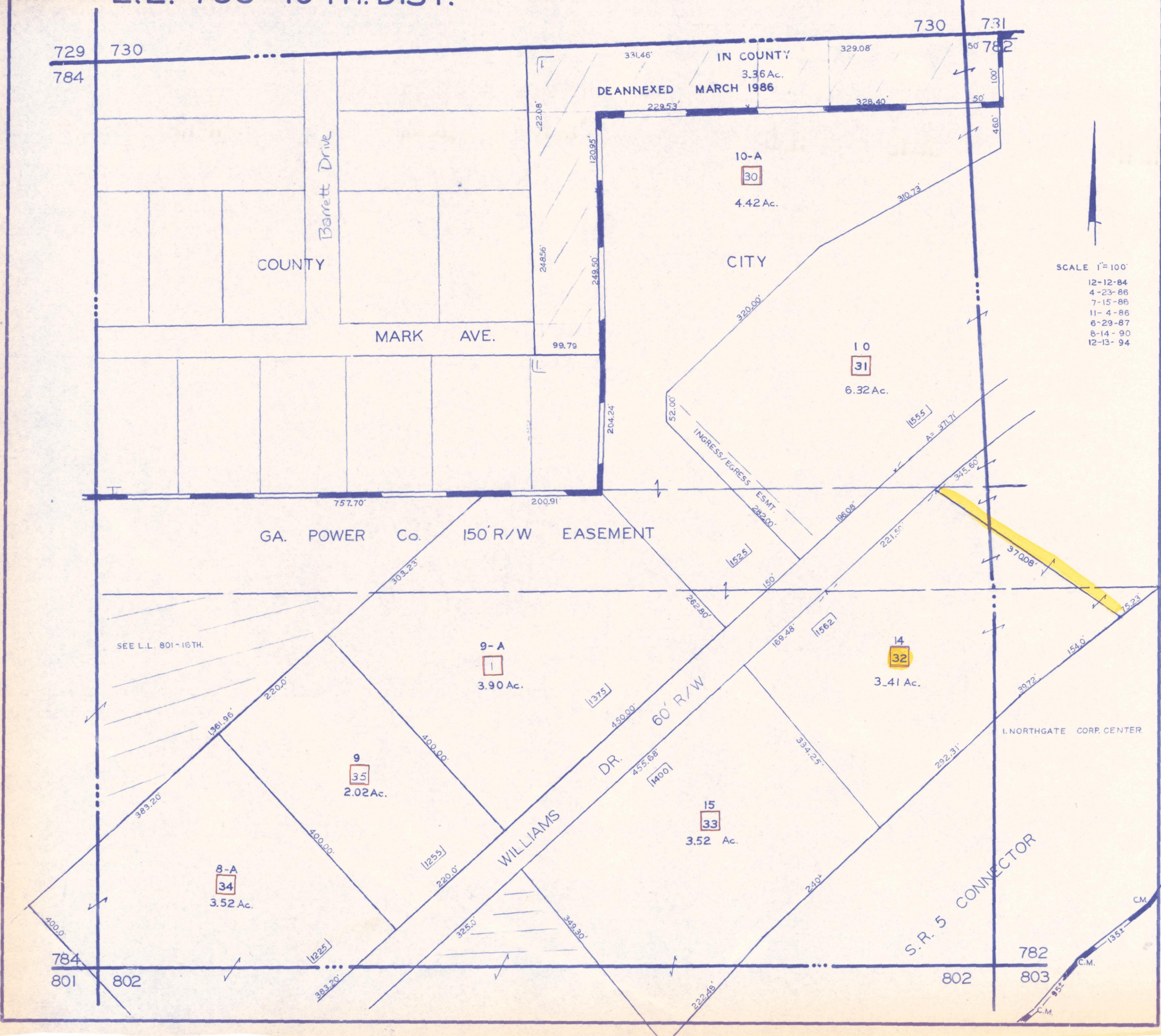


L.L. 783 - 16 TH. DIST.



SCALE 1"=100'
12-12-84
4-23-86
7-15-86
11-4-86
6-29-87
8-14-90
12-13-94

I. NORTHGATE CORP. CENTER

SEE L.L. 801-16TH.

IN COUNTY
DEANNEXED
MARCH 1986
3.36 Ac.

GA. POWER Co. 150' R/W EASEMENT

WILLIAMS DR. 60' R/W

S.R. 5 CONNECTOR

COUNTY

CITY

MARK AVE.

Barrett Drive

729 730
784

730 731
782

784 801
802

782 802
803