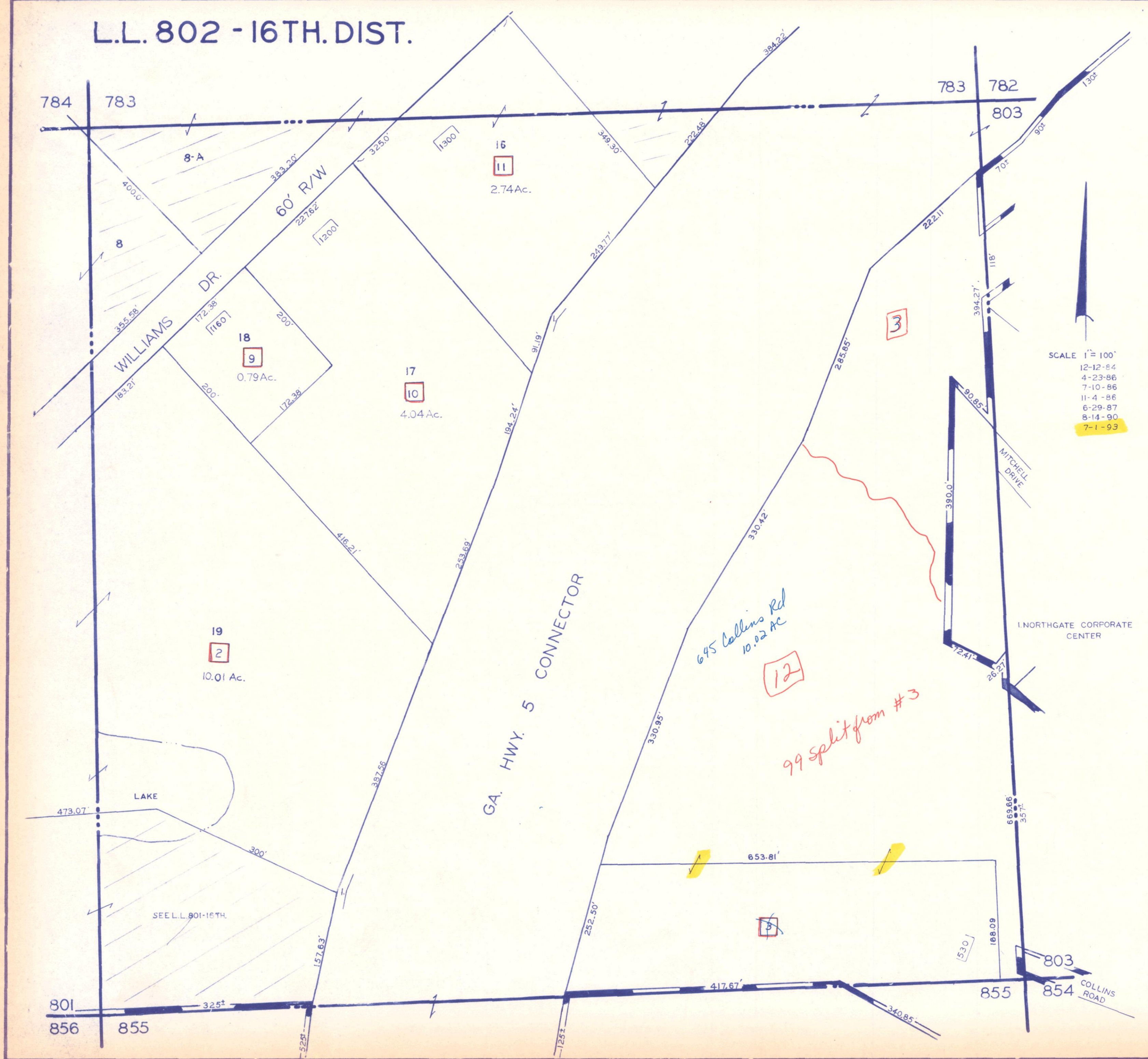


L.L. 802 - 16TH. DIST.



SCALE 1" = 100'

- 12-12-84
- 4-23-86
- 7-10-86
- 11-4-86
- 6-29-87
- 8-14-90
- 7-1-93

GA. HWY. 5 CONNECTOR

645 Collins Rd
10.02 Ac

99 split from #3

SEE L.L. 801-16TH.

1 NORTHGATE CORPORATE CENTER

COLLINS ROAD

784 783

783 782

801 856 855

803 855 854

WILLIAMS DR.

MITCHELL DRIVE

LAKE

8-A

18

0.79 Ac.

17

4.04 Ac.

19

10.01 Ac.

16

2.74 Ac.

12

15

3

1200'

1200'

1200'

1530'

172.38'

172.38'

355.58'

183.21'

400.0'

172.38'

200'

200'

172.38'

200'

183.21'

355.58'

400.0'

172.38'

200'

200'

172.38'

200'

183.21'

355.58'

400.0'

172.38'

200'

200'

172.38'

200'

183.21'

355.58'

400.0'

172.38'

200'

200'

172.38'

200'

183.21'

355.58'

400.0'

172.38'

325.0'

383.20'

227.62'

227.62'

325.0'

383.20'

227.62'

227.62'

325.0'

383.20'

227.62'

227.62'

325.0'

383.20'

227.62'

227.62'

325.0'

383.20'

227.62'

227.62'

325.0'

383.20'

227.62'

227.62'

325.0'

383.20'

227.62'

227.62'

325.0'

383.20'

227.62'

227.62'

325.0'

383.20'

227.62'

227.62'

325.0'

383.20'

227.62'

227.62'

325.0'

383.20'

227.62'

227.62'

325.0'

325.0'

383.20'

227.62'

227.62'

325.0'

383.20'

227.62'

227.62'

325.0'

383.20'

227.62'

227.62'

325.0'

383.20'

227.62'

227.62'

325.0'

383.20'

227.62'

227.62'

325.0'

383.20'

227.62'

227.62'

325.0'

383.20'

227.62'

227.62'

325.0'

383.20'

227.62'

227.62'

325.0'

383.20'

227.62'

227.62'

325.0'

383.20'

227.62'

227.62'

325.0'

383.20'

227.62'

227.62'

325.0'

325.0'

383.20'

227.62'

227.62'

325.0'

383.20'

227.62'

227.62'

325.0'

383.20'

227.62'

227.62'

325.0'

383.20'

227.62'

227.62'

325.0'

383.20'

227.62'

227.62'

325.0'

383.20'

227.62'

227.62'

325.0'

383.20'

227.62'

227.62'

325.0'

383.20'

227.62'

227.62'

325.0'

383.20'

227.62'

227.62'

325.0'

383.20'

227.62'

227.62'

325.0'

383.20'

227.62'

227.62'

325.0'

325.0'

383.20'

227.62'

227.62'

325.0'

383.20'

227.62'

227.62'

325.0'

383.20'

227.62'

227.62'

325.0'

383.20'

227.62'

227.62'

325.0'

383.20'

227.62'

227.62'

325.0'

383.20'

227.62'

227.62'

325.0'

383.20'

227.62'

227.62'

325.0'

383.20'

227.62'

227.62'

325.0'

383.20'

227.62'

227.62'

325.0'

383.20'

227.62'

227.62'

325.0'

383.20'

227.62'

227.62'

325.0'

325.0'

383.20'

227.62'

227.62'

325.0'

383.20'

227.62'

227.62'

325.0'

383.20'

227.62'

227.62'

325.0'

383.20'

227.62'

227.62'

325.0'

383.20'

227.62'

227.62'

325.0'

383.20'

227.62'

227.62'

325.0'

383.20'

227.62'

227.62'

325.0'

383.20'

227.62'

227.62'

325.0'

3