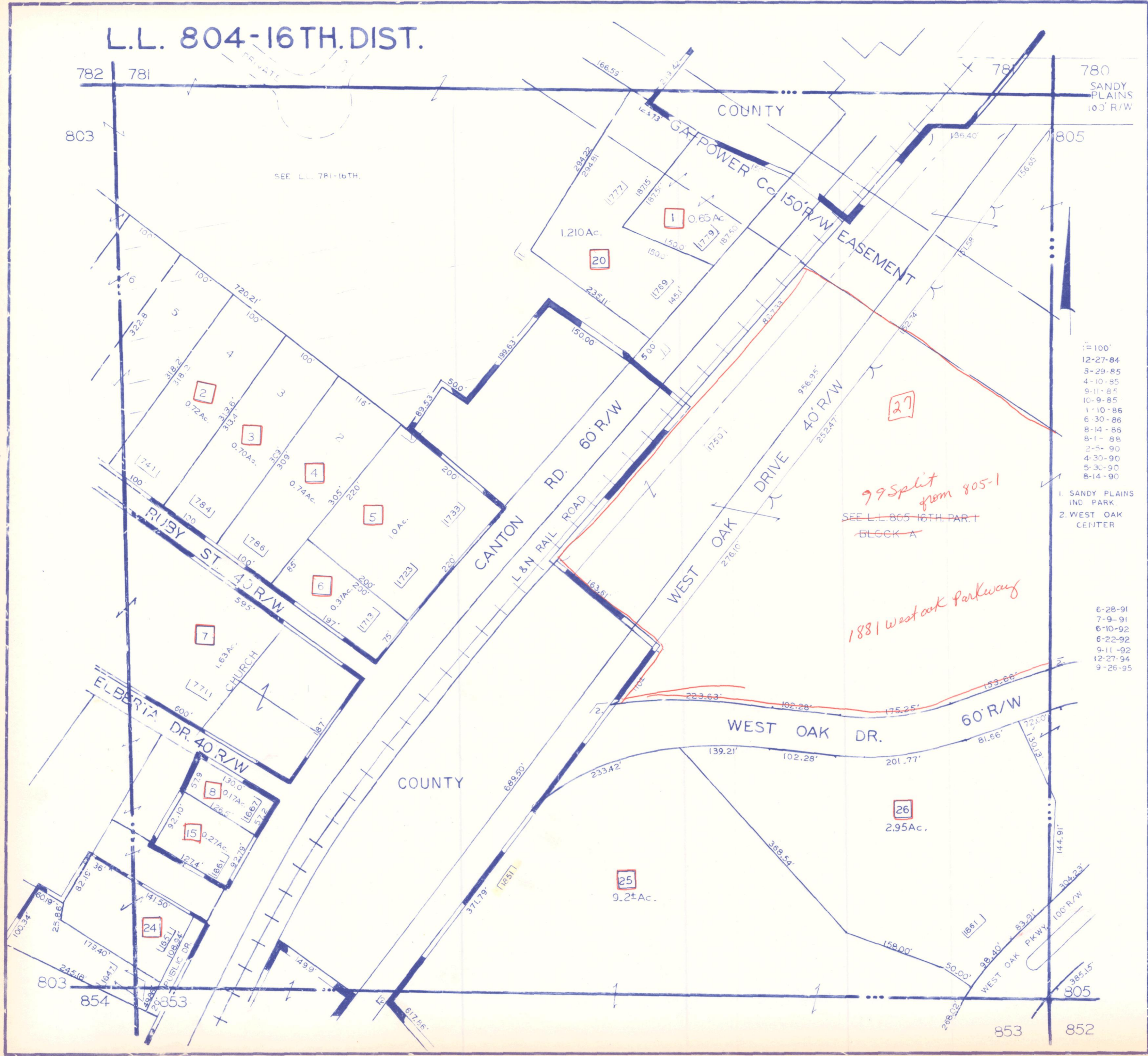


# L.L. 804-16TH.DIST.



1" = 100'  
 12-27-84  
 3-29-85  
 4-10-85  
 9-11-85  
 10-9-85  
 1-10-86  
 6-30-86  
 8-14-86  
 8-1-88  
 2-5-90  
 4-30-90  
 5-30-90  
 8-14-90

1 SANDY PLAINS  
 IND PARK  
 2 WEST OAK  
 CENTER

6-28-91  
 7-9-91  
 6-10-92  
 6-22-92  
 9-11-92  
 12-27-94  
 9-26-95

*99 Split from 805-1*  
 SEE L.L. 805-16TH. PART  
 BLOCK A

*1881 West Oak Parkway*