

L.L. 868 - 16TH. DIST.

862
867

861
194.57'

710.3'
552.69'

861
860
869 102.09'

863.82'

2
6.16Ac.

1451.89'

1170±

495.03'
495.03'

1360

867
934 933

4
1470

97 split from Parcel 1

1275

1130

WHITE CIR.

1
23.74Ac.

3
1455

97 split from Parcel 1

SEE L.L. 869-16TH.
PAR. 4

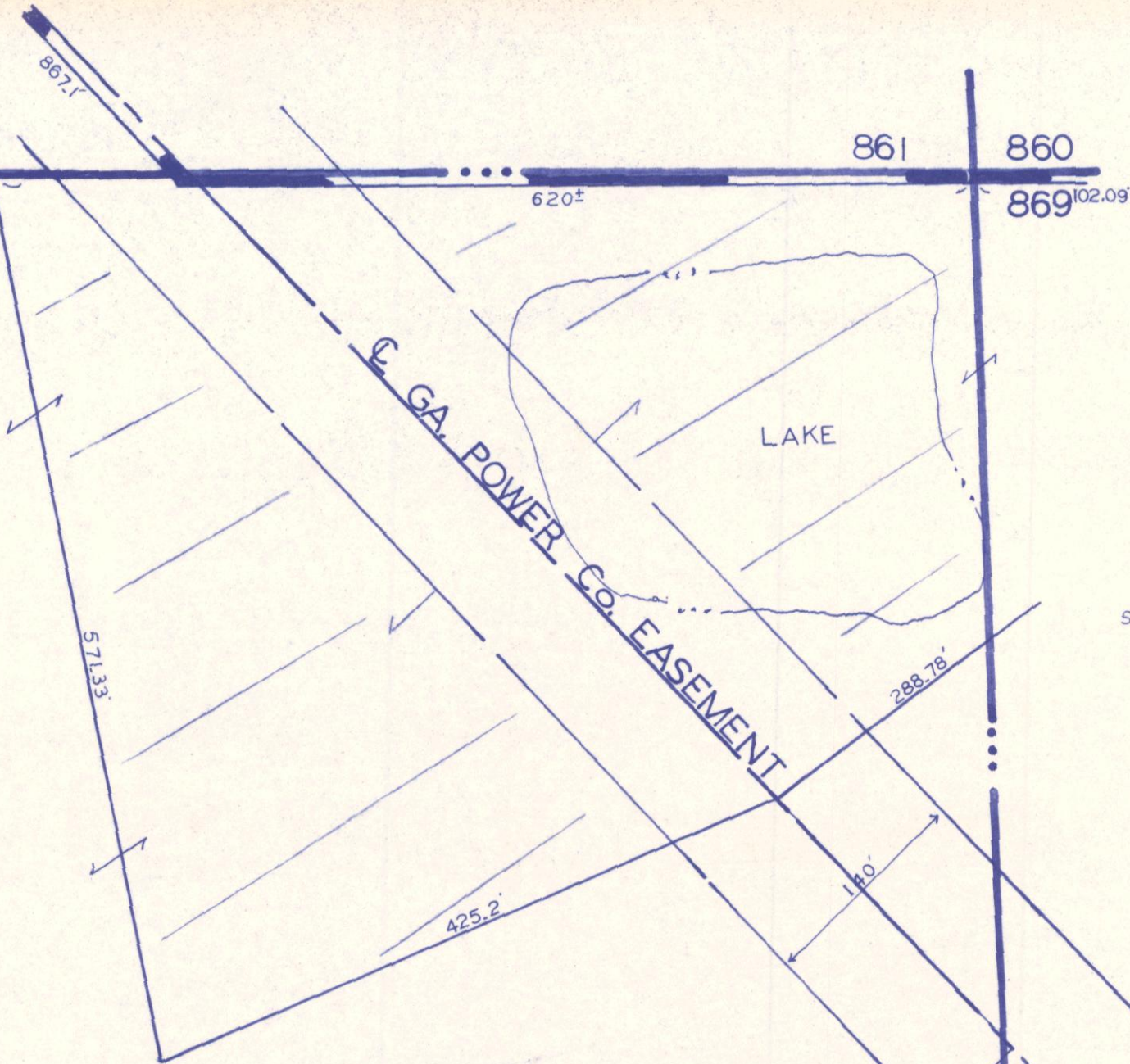
SEE L.L. 869-16TH.
PAR. 4

4689.6'

411.80'

370.36'

869
933 932



SCALE 1" = 100'
6-30-86
8-14-90
7-9-91
7-31-92
8-6-92
4-14-93
3-12-93
2-14-94