

TAX MAP 16-1015

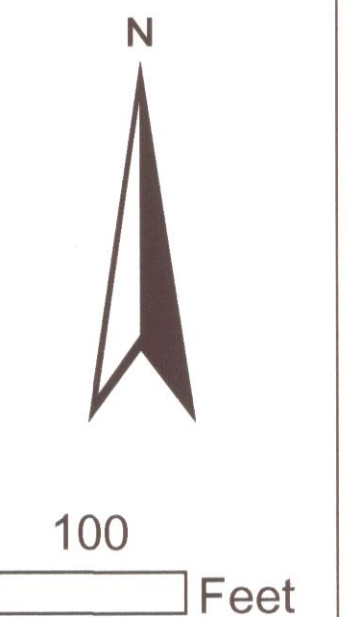
Plot Date: Nov 09, 2005

Legend

- Parcel Lines
- Creek Parcel Lines
- City Limit Lines
- ROW Lines
- School Tax Exempt
- Parcels Inside Landlot
- Parcels Outside Landlot
- Cobb County Parcels
- Unidentified Parcels

Reference Area:

16-1003	16-1002	16-1001
16-1014	16-1015	16-1016
16-1075	16-1074	16-1073



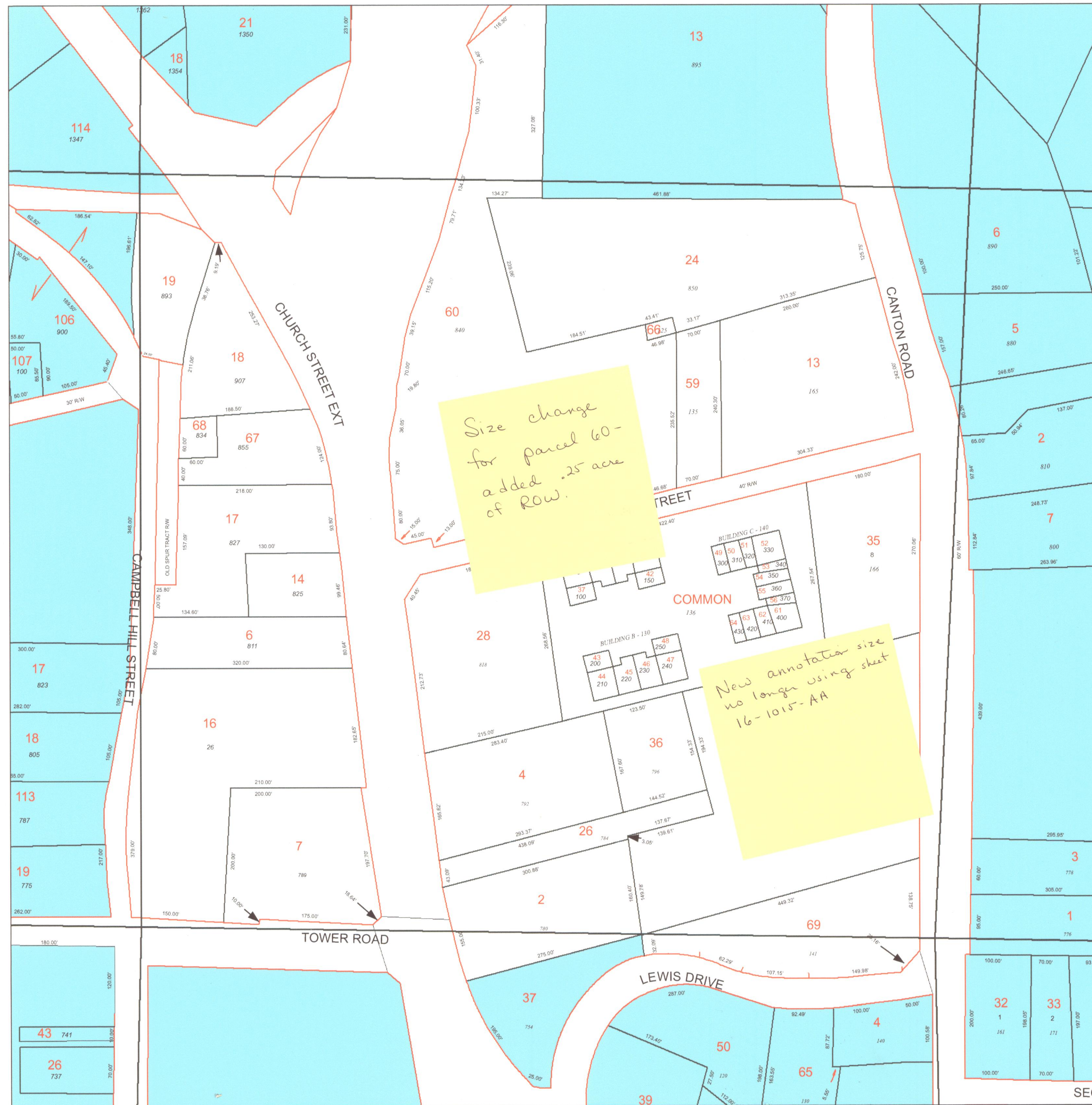
DISCLAIMER NOTE: This map is prepared for the inventory of real property found within this jurisdiction and is compiled from aerial photography, recorded deeds, plats, and other imagery, data and public records. Users of this map are hereby notified that the aforementioned primary public information sources should be consulted for verification of the information contained on this map. This jurisdiction, and the mapping companies involved in preparing it, assume no legal responsibilities for the information contained on this map.

Coordinate System based on Georgia State Plane System.
West Zone - NAD83



GIS Department
205 Lawrence Street - Marietta, Georgia 30060

www.mariettaga.gov



SEQ