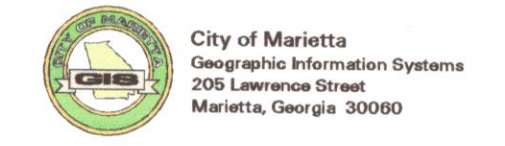


- CADASTRAL -

16-1016

Plot Date: January 10, 2003
Revision Date:



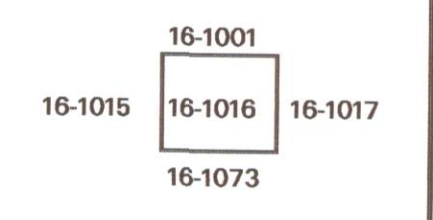
LEGEND:

- Parcel Lines
 - Lot Lines
 - City Limit Lines
 - ROW Lines
 - School Exempt
 - County Parcel
 - Parcels Outside Landlot
 - Undefined Parcels
- 25 - Parcel No.
 13 - Lot/Suite No.
 360 - Address

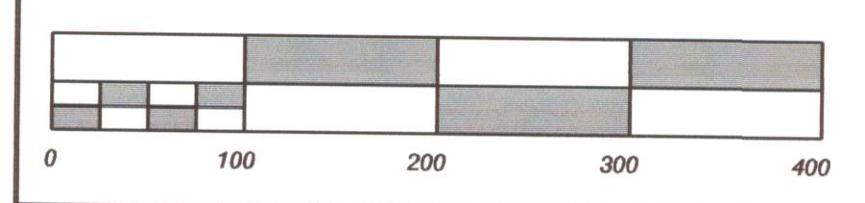
DISCLAIMER NOTE: This map is prepared for the inventory of real property found within this jurisdiction and is compiled from aerial photography, recorded deeds, plats, and other imagery, data and public records. Users of this map are hereby notified that the aforementioned primary public information sources should be consulted for verification of the information contained on this map. This jurisdiction, and the mapping companies involved in preparing it, assume no legal responsibilities for the information contained on this map.

Coordinate System based on Georgia State Plane System.
 West Zone - NAD83

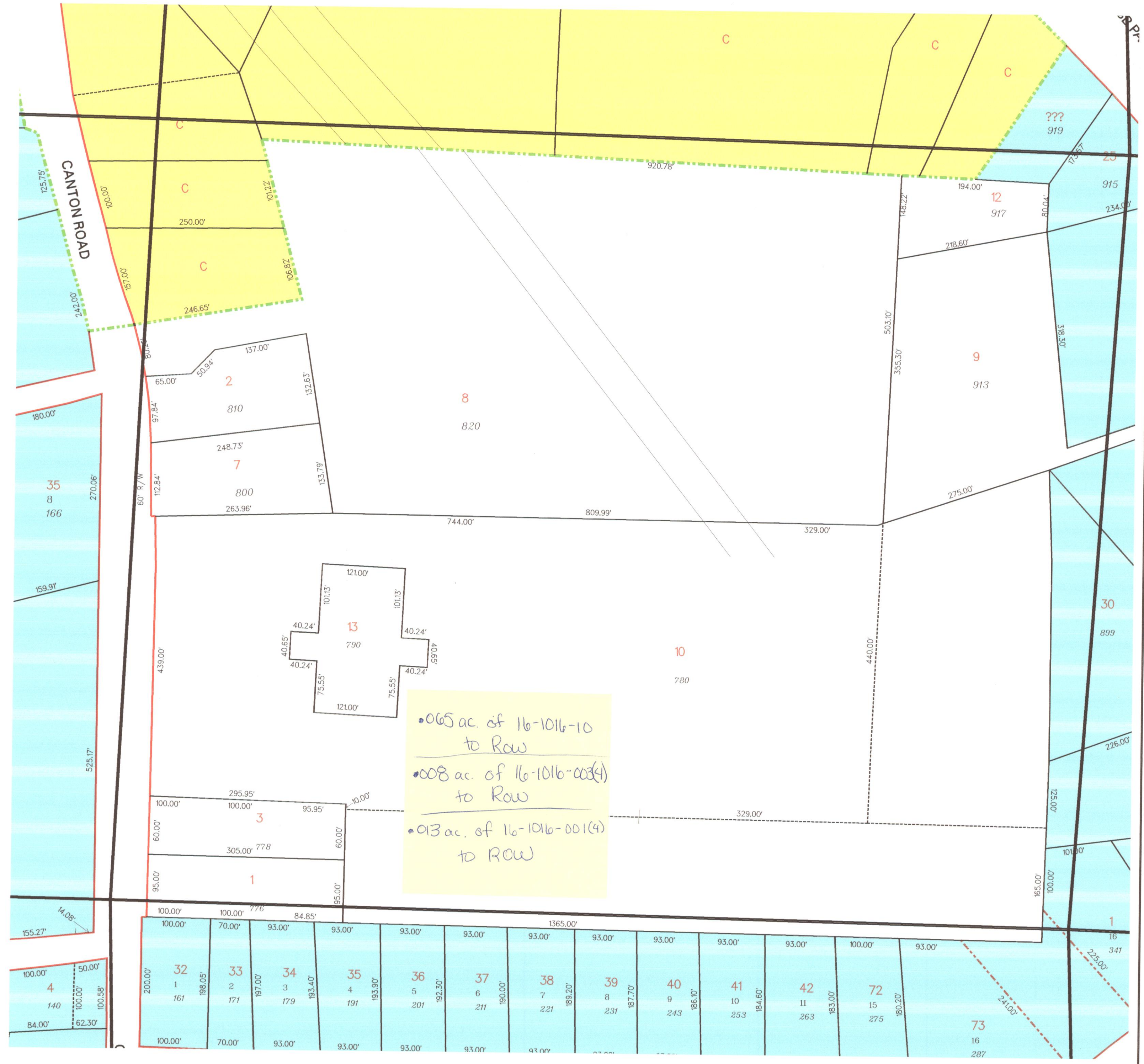
TILES:



SCALE 1"=100'



City of Marietta, Georgia
 - GIS Department -
 205 Lawrence Street - Marietta, Georgia - 30060



• 065 ac. of 16-1016-10 to Row
 • 008 ac. of 16-1016-003(4) to Row
 • 013 ac. of 16-1016-001(4) to Row