

L.L. 1065 16TH DIST.

1023

1024

1024

1025

1066

1064

1066

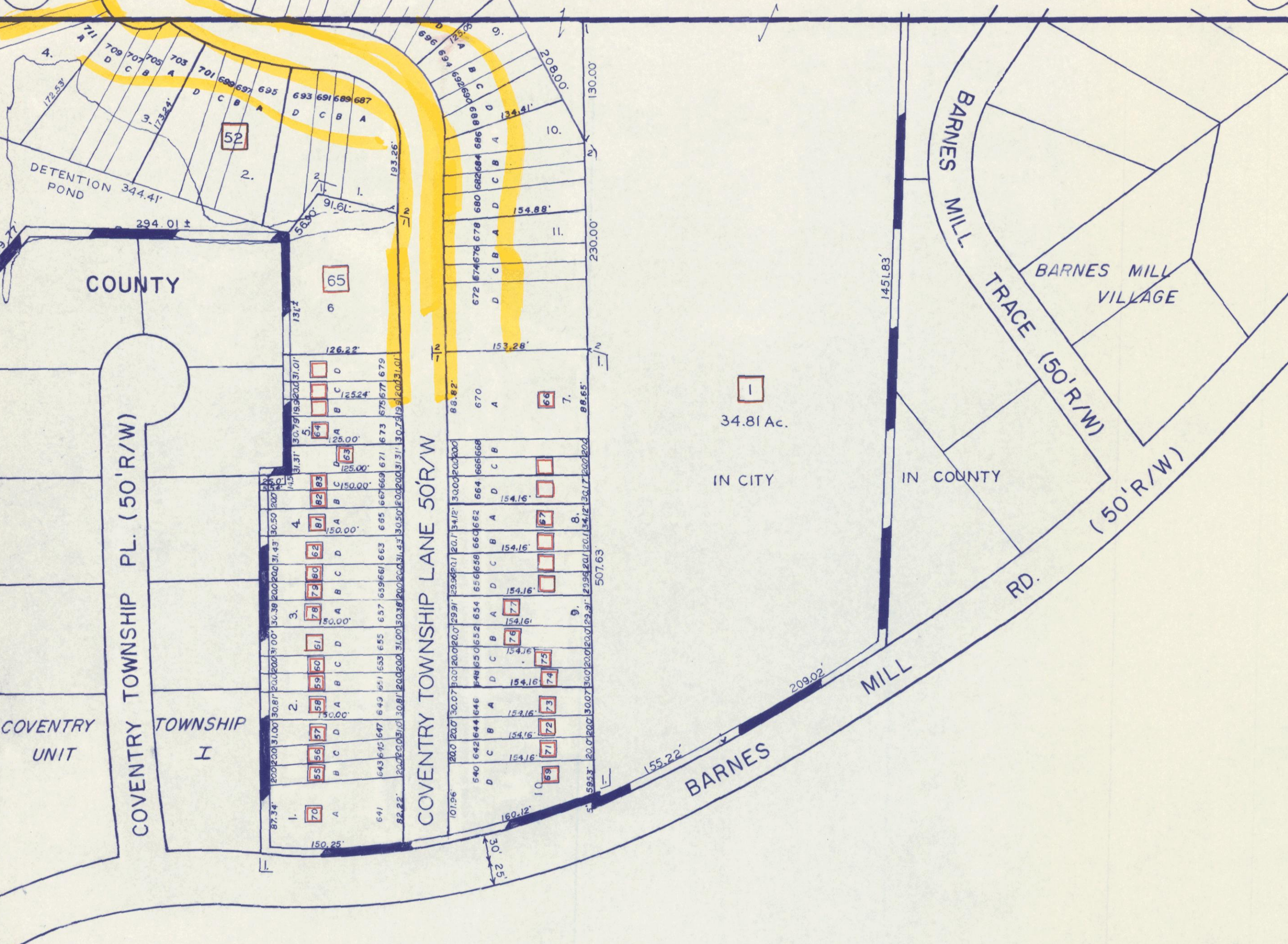
1064

1095

1096

1096

1097



SCALE 1"=100'
DRAWN 1-15-86
3-21-86
4-21-86
8-12-86
6-22-87
7-21-87
4-19-88
11-8-88

1. COVENTRY TOWNSHIP LANE UNIT I
2. COVENTRY TOWNSHIP LANE UNIT II

CITY

COUNTY

34.81 Ac.

IN CITY

IN COUNTY

COUNTY

COVENTRY UNIT
COVENTRY TOWNSHIP I

COVENTRY TOWNSHIP PL. (50' R/W)

COVENTRY TOWNSHIP LANE 50'R/W

BARNES MILL TRACE (50' R/W)

BARNES MILL VILLAGE

BARNES MILL RD. (50' R/W)

DETENTION POND 344.41'

286.05' ±

59.77'

682.0'

150.25'

30' ±

150.25'

150.25'

150.25'

150.25'

150.25'

172.53'

294.01 ±

131.2'

126.22'

125.00'

125.00'

125.00'

125.00'

125.00'

125.00'

125.00'

125.00'

125.00'

708

707

705

703

699

697

695

693

691

689

687

685

683

701

699

697

695

693

691

689

687

685

683

681

679

677

696

694

692

690

688

686

684

682

680

678

676

674

672

696

694

692

690

688

686

684

682

680

678

676

674

672

696

694

692

690

688

686

684

682

680

678

676

674

672

696

694

692

690

688

686

684

682

680

678

676

674

672

696

694

692

690

688

686

684

682

680

678

676

674

672

696

694

692

690

688

686

684

682

680

678

676

674

672

696

694

692

690

688

686

684

682

680

678

676

674

672

696

694

692

690

688

686

684

682

680

678

676

674

672

696

694

692

690

688

686

684

682

680

678

676

674

672

696

694

692

690

688

686

684

682

680

678

676

674

672

696

694

692

690

688

686

684

682

680

678

676

674

672

696

694

692

690

688

686

684

682

680

678

676

674

672

696

694

692

690

688

686

684

682

680

678

676

674

672

696

694

692

690

688

686

684

682

680

678

676

674

672

696

694

692

690

688

686

684

682

680

678

676

674

672

696

694

692

690

688

686

684

682

680

678

676

674

672

696

694

692

690

688

686

684

682

680

678

676

674

672

696

694

692

690

688

686

684

682

680

678

676

674

672

696

694

692

690

688

686

684

682

680

678

676

674

672

696

694

692

690

688

686

684