

ORIGIN.

1070-16

1070-16

018 019
1071

1019 1020
1069

2

GEORGIA MINERAL RAIL ROAD
LUTHER P. BARTON

FOUR LANE HIGHWAY

GEORGIA POWER COMPANY POLE LINE

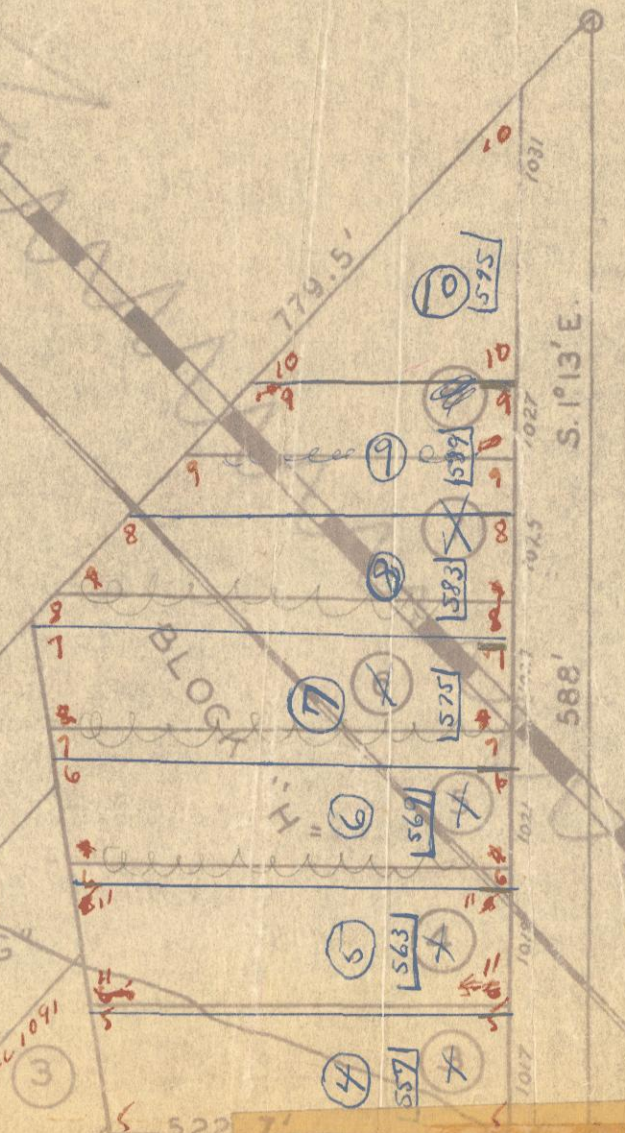
CITY LIMITS

N. 1°22' W. 498.1'

N. 42°01' E.

S. 1°13' E.

1 2 3
45°00' W. 33.8'



88888888