

107-16

1017

1018

1072

1018

1019

1070

1070

1072

1089

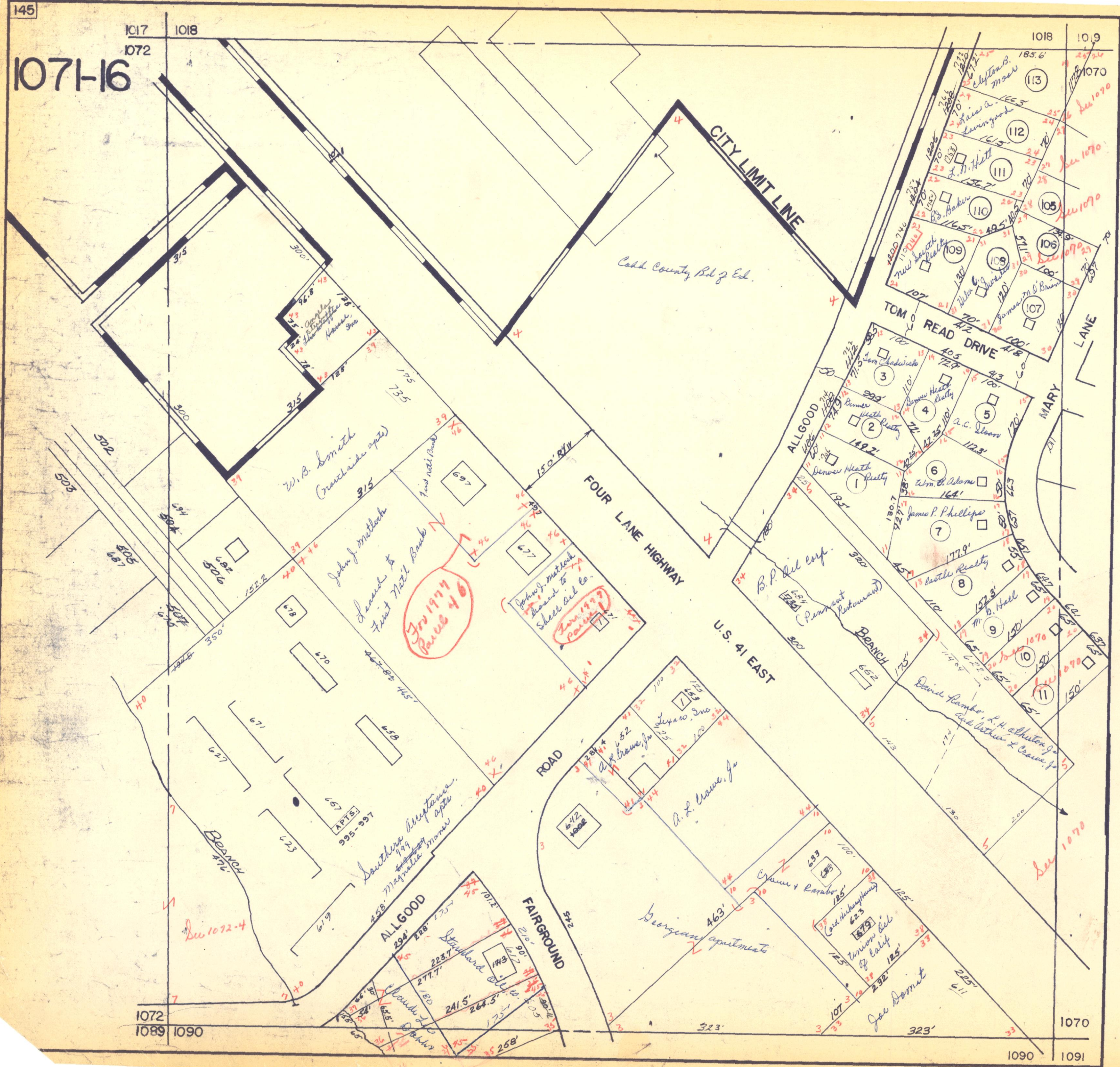
1090

1090

1091

JAN. 1964 RJM

REVISED 1-17-66 JWH



Cadd. County Bd. of Ed.

CITY LIMIT LINE

FOUR LANE HIGHWAY

U.S. 41 EAST

TOM READ DRIVE

MARY LANE

W.B. Smith
Crescent side apt.

John J. Mitchell
Leased to
First Nat'l Bank

From 1974
Parcel 46

Robert J. Mitchell
Leased to
Shell Oil Co.

B.P. Oil Corp.
(Permanent Restaurant)

A.L. Crane, Jr.

Bourgeois Apartments

Southern Acceptance
Apts.
Magnetic Tower

ALLGOOD

FAIRGROUND

Crane & Rembo

Union Oil
of Calif.

Joe Damit

David Rembo, L.H. Arthur
and Arthur L. Crane, Jr.

Carl W. Humphrey

Joe Damit

See 1072-4

See 1070

See 1072-4

See 1070

See 1072-4

See 1070