

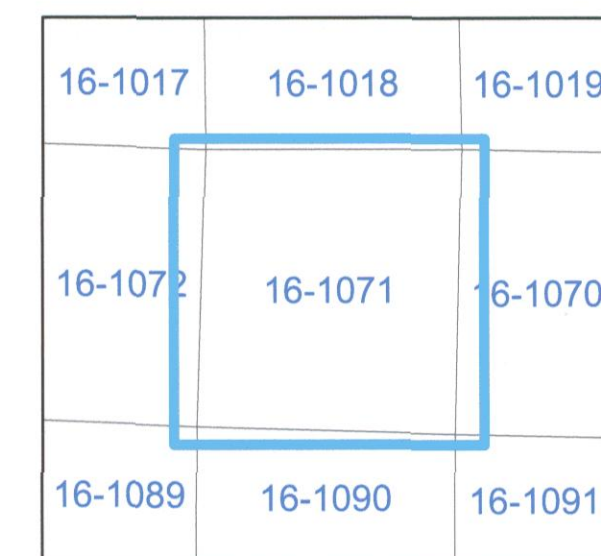
# TAX MAP 16-1071

Plot Date: March 10, 2010

### Legend

-  Parcel Lines
-  Creek Parcel Lines
-  City Limit Lines
-  ROW Lines
-  School Tax Exempt
-  Parcels Inside Landlot
-  Parcels Outside Landlot
-  Cobb County Parcels
-  Unidentified Parcels

### Reference Area:



1 = 100 Feet

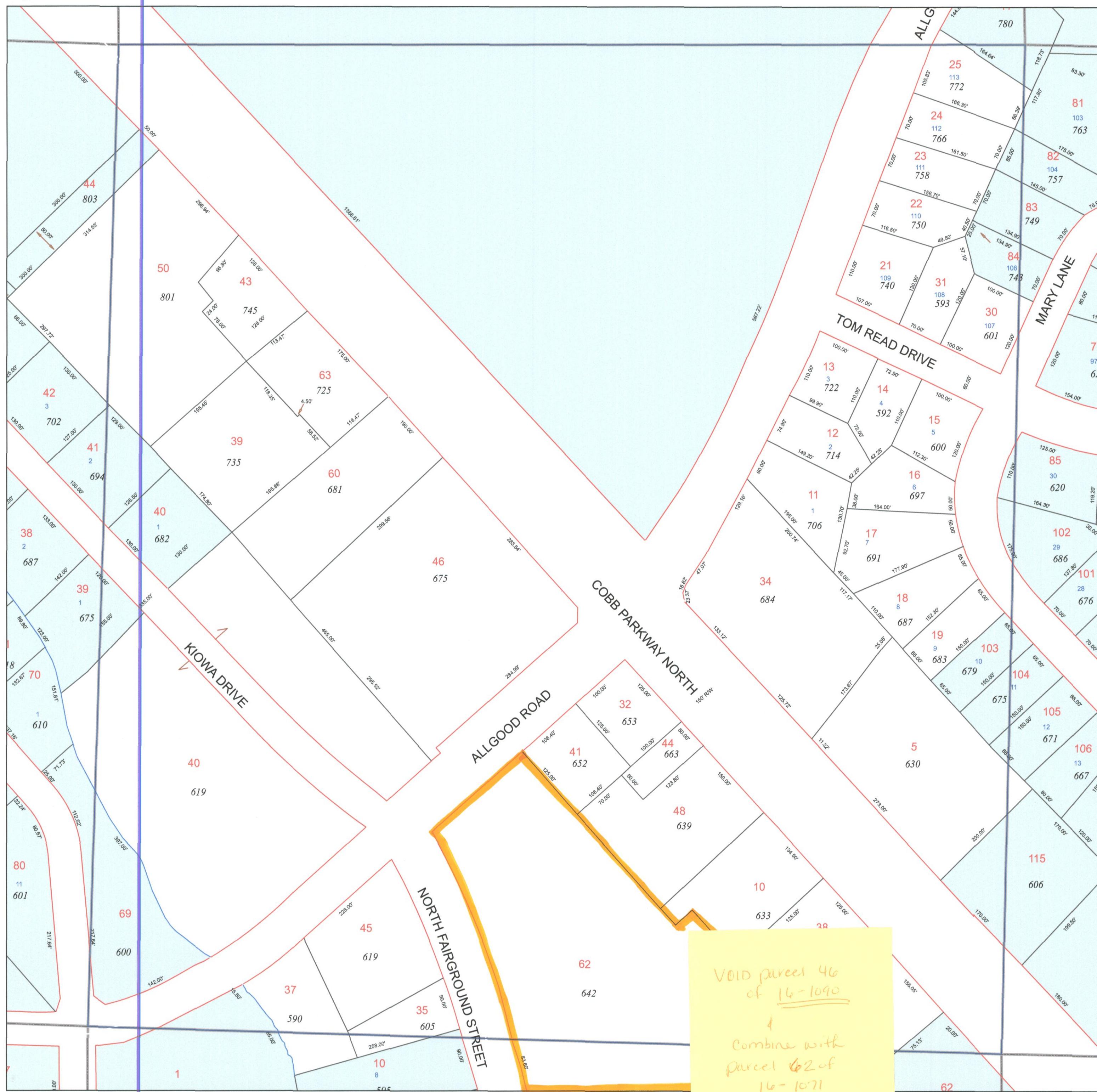
**DISCLAIMER NOTE:** This map is prepared for the inventory of real property found within this jurisdiction and is compiled from aerial photography, recorded deeds, plats, and other imagery, data and public records. Users of this map are hereby notified that the aforementioned primary public information sources should be consulted for verification of the information contained on this map. This jurisdiction, and the mapping companies involved in preparing it, assume no legal responsibilities for the information contained on this map.

Coordinate System based on Georgia State Plane System.  
West Zone - NAD83



CITY OF  
**Marietta**  
GEORGIA

GIS Department  
205 Lawrence Street - Marietta, Georgia 30060  
[www.mariettaga.gov](http://www.mariettaga.gov)



VOID parcel 46  
of 16-1090  
+  
combine with  
parcel 62 of  
16-1071