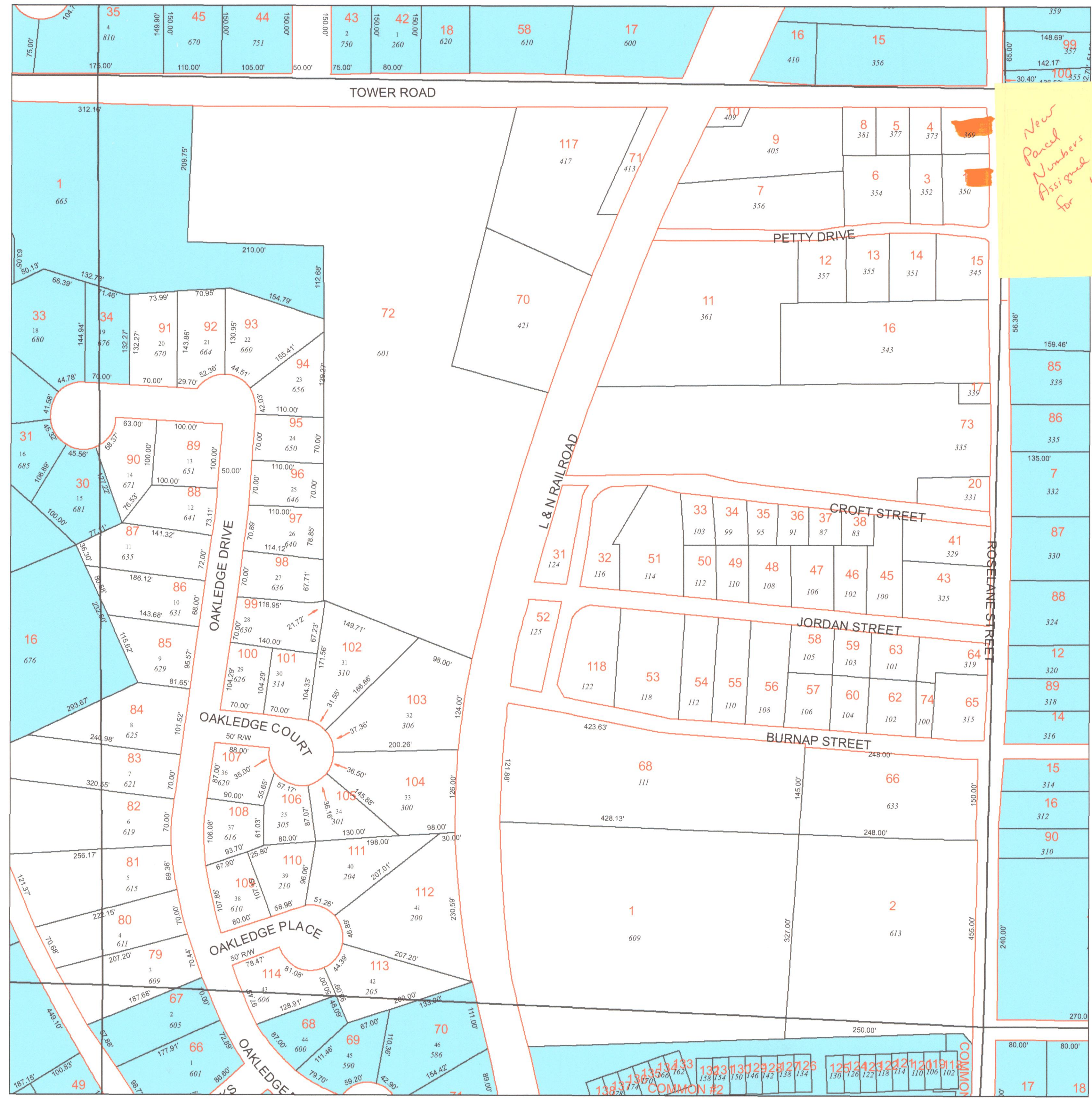


# TAX MAP 6-1076

Date: Jun 29, 2005

*New Parcel Numbers Assigned for 1.0 = 119  
2.0 = 120*

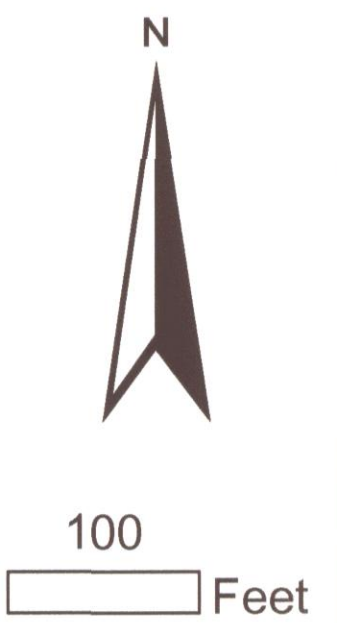


**Legend**

- Parcel Lines
- Creek Parcel Lines
- City Limit Lines
- ROW Lines
- School Tax Exempt
- Parcels Inside Landlot
- Parcels Outside Landlot
- Cobb County Parcels
- Unidentified Parcels

Reference Area:

16-1012	16-1013	16-1014
16-1077	16-1076	16-1075
16-1084	16-1085	16-1086



**DISCLAIMER NOTE:** This map is prepared for the inventory of real property found within this jurisdiction and is compiled from aerial photography, recorded deeds, plats, and other imagery, data and public records. Users of this map are hereby notified that the aforementioned primary public information sources should be consulted for verification of the information contained on this map. This jurisdiction, and the mapping companies involved in preparing it, assume no legal responsibilities for the information contained on this map.

Coordinate System based on Georgia State Plane System.  
West Zone - NAD83

Marietta  
GIS Department  
205 Lawrence Street - Marietta, Georgia 30060  
[www.mariettaga.gov](http://www.mariettaga.gov)