

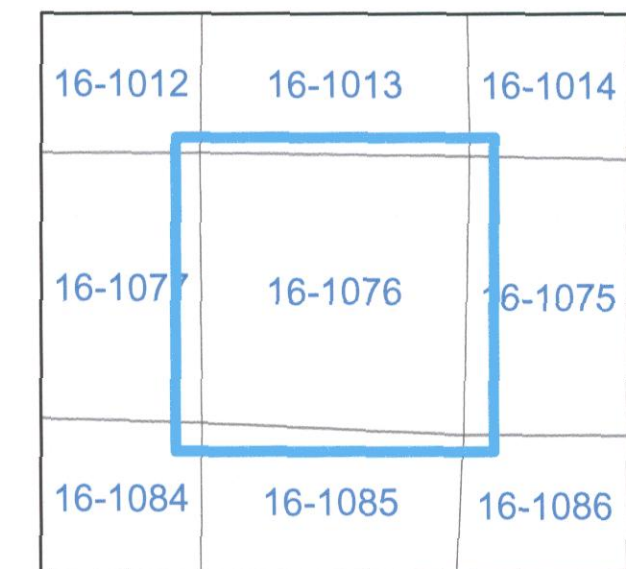
TAX MAP 16-1076

Plot Date: June 3, 2009

Legend

- Parcel Lines
- Creek Parcel Lines
- City Limit Lines
- ROW Lines
- School Tax Exempt
- Parcels Inside Landlot
- Parcels Outside Landlot
- Cobb County Parcels
- Unidentified Parcels

Reference Area:



1 = 100 Feet

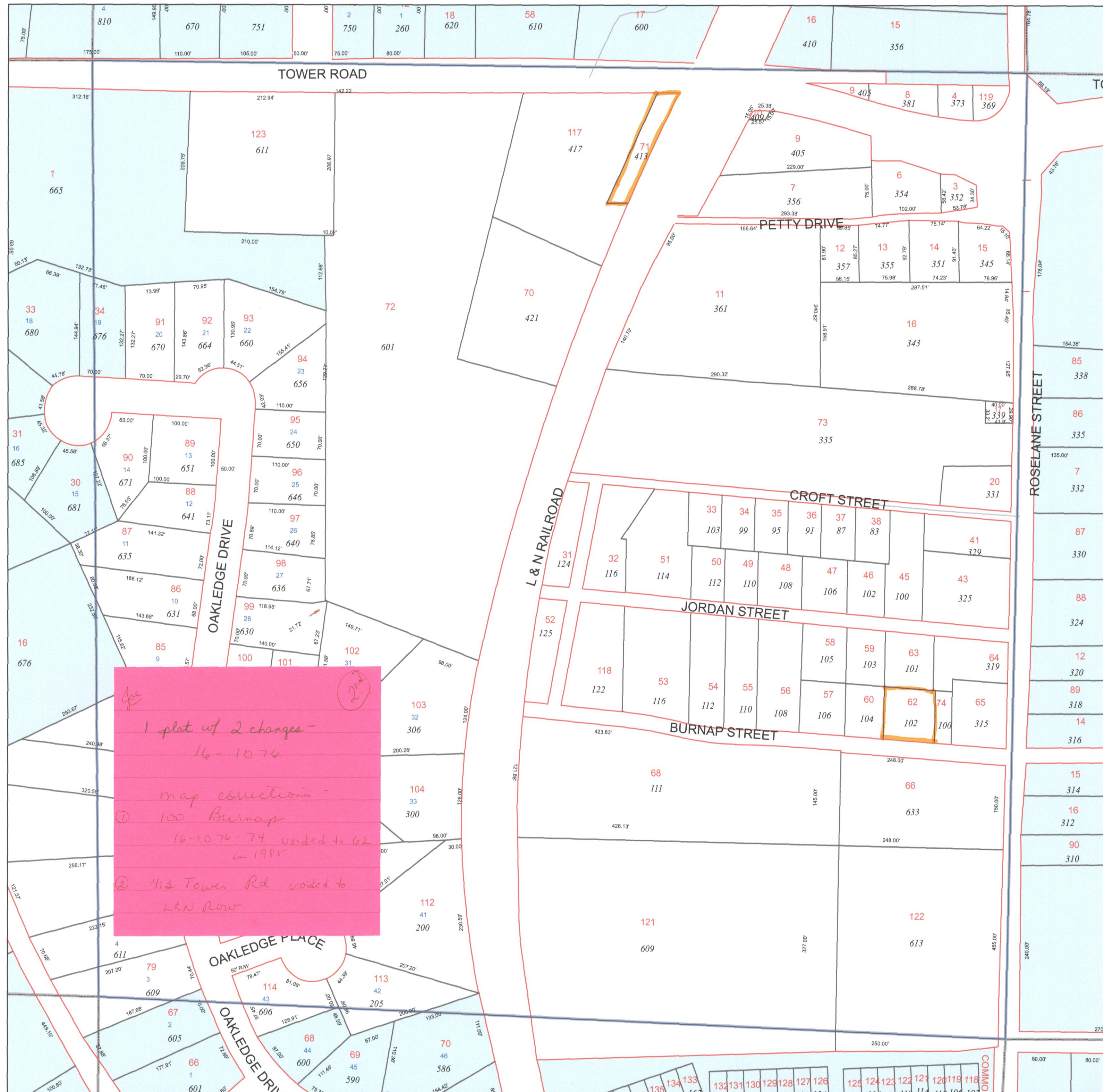
DISCLAIMER NOTE: This map is prepared for the inventory of real property found within this jurisdiction and is compiled from aerial photography, recorded deeds, plats, and other imagery, data and public records. Users of this map are hereby notified that the aforementioned primary public information sources should be consulted for verification of the information contained on this map. This jurisdiction, and the mapping companies involved in preparing it, assume no legal responsibilities for the information contained on this map.

Coordinate System based on Georgia State Plane System.
West Zone - NAD83



GIS Department
205 Lawrence Street - Marietta, Georgia 30060

www.marietta.gov



*1 plat w/ 2 changes -
16-1076*

map corrections -

*① 100 Burnap
16-1076-74 voided to 62
in 1985*

*② 413 Tower Rd voided to
L&N Row*