

TAX MAP 16-1150

Plot Date: February 18, 2010

Legend

- Parcel Lines
- Creek Parcel Lines
- City Limit Lines
- ROW Lines
- School Tax Exempt
- Parcels Inside Landlot
- Parcels Outside Landlot
- Cobb County Parcels
- Unidentified Parcels

Reference Area:

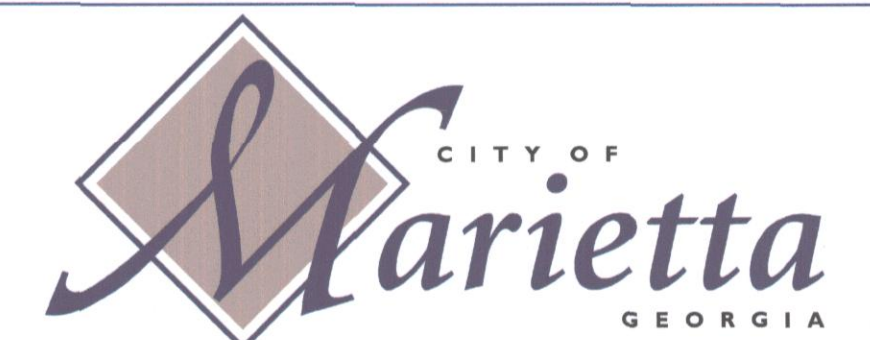
16-1082	16-1083	16-1084
16-1151	16-1150	16-1149
16-1154	16-1155	16-1156



1 = 100 Feet

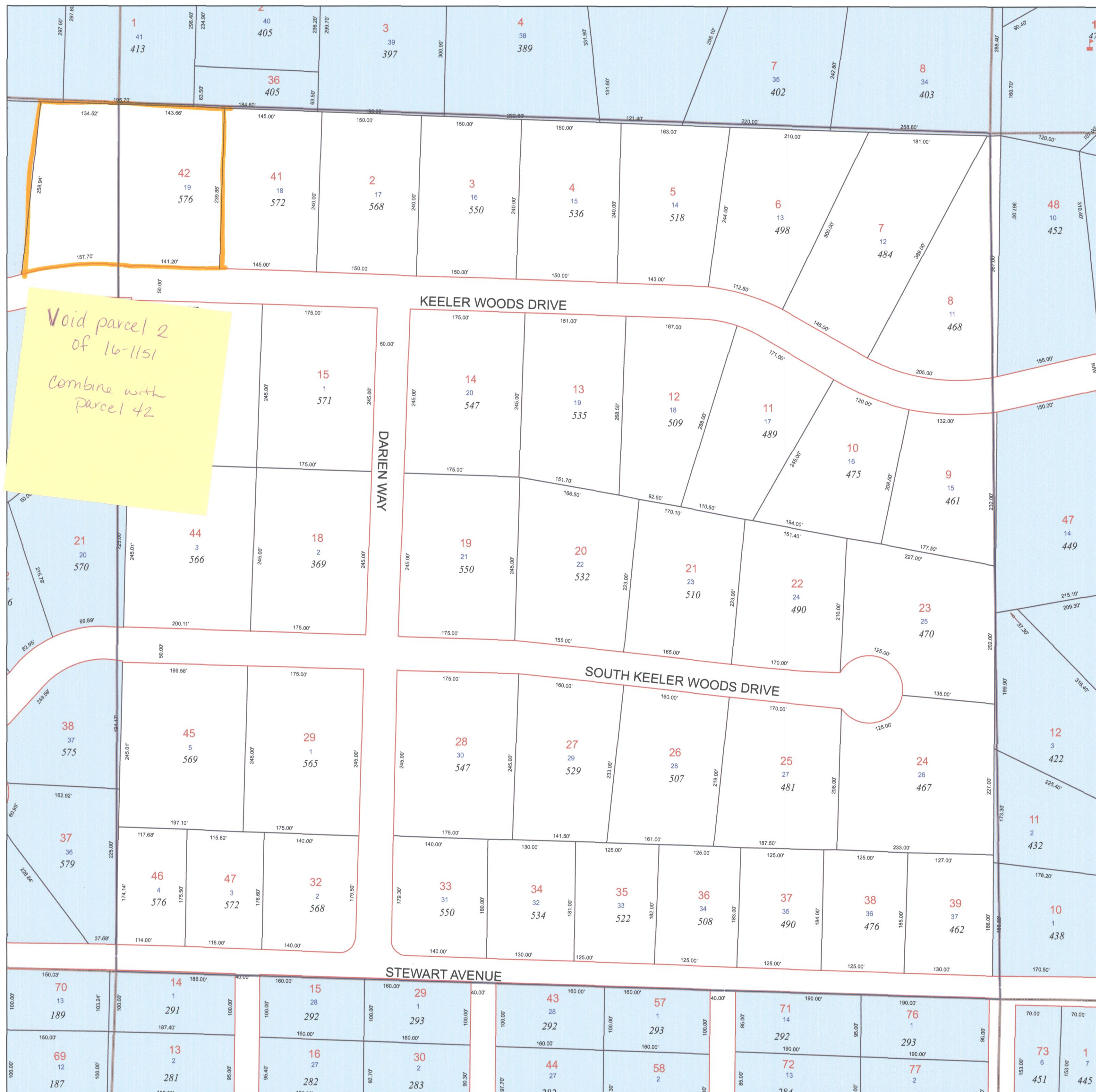
DISCLAIMER NOTE: This map is prepared for the inventory of real property found within this jurisdiction and is compiled from aerial photography, recorded deeds, plats, and other imagery, data and public records. Users of this map are hereby notified that the aforementioned primary public information sources should be consulted for verification of the information contained on this map. This jurisdiction, and the mapping companies involved in preparing it, assume no legal responsibilities for the information contained on this map.

Coordinate System based on Georgia State Plane System.
West Zone - NAD83



GIS Department
205 Lawrence Street - Marietta, Georgia 30060

www.mariettaga.gov



Void parcel 2
of 16-1151
Combine with
parcel 42