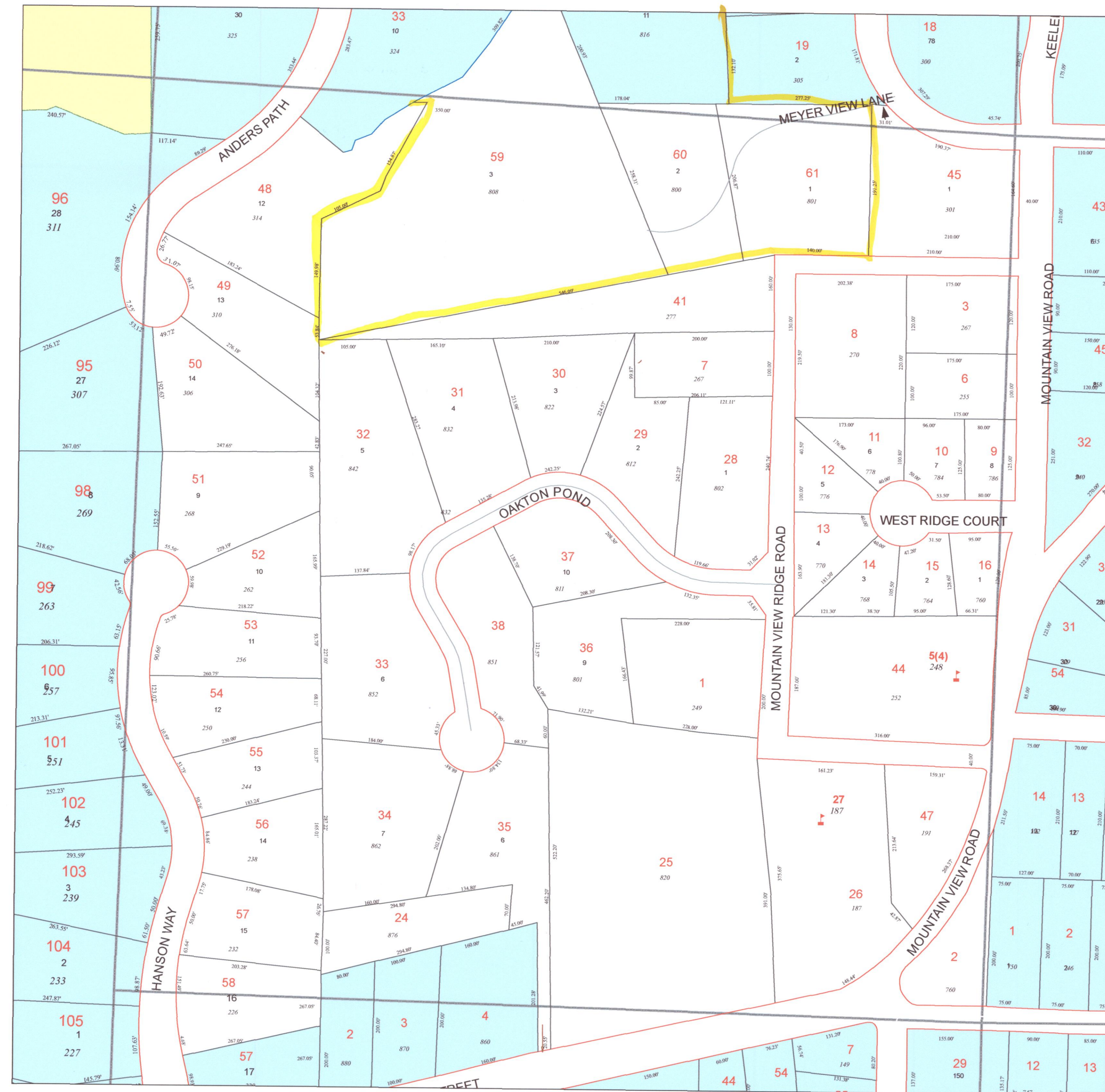


TAX MAP 16-1153

Plot Date: December 13, 2007



Legend

- Parcel Lines
- Creek Parcel Lines
- City Limit Lines
- ROW Lines
- School Tax Exempt
- Parcels Inside Landlot
- Parcels Outside Landlot
- Cobb County Parcels
- Unidentified Parcels

Reference Area:

A grid of map sheets is shown, with the current sheet 16-1153 highlighted in blue. The grid includes sheets 20-0286, 16-1152, 16-1151, 20-0323, 16-1153, 6-1154, 16-1224, and 16-1223. A north arrow and a scale bar indicating 1 = 100 Feet are also present.

DISCLAIMER NOTE: This map is prepared for the inventory of real property found within this jurisdiction and is compiled from aerial photography, recorded deeds, plats, and other imagery, data and public records. Users of this map are hereby notified that the aforementioned primary public information sources should be consulted for verification of the information contained on this map. This jurisdiction, and the mapping companies involved in preparing it, assume no legal responsibilities for the information contained on this map.

Coordinate System based on Georgia State Plane System, West Zone - NAD83

CITY OF Marietta GEORGIA

GIS Department
205 Lawrence Street - Marietta, Georgia 30060
www.mariettaga.gov