

TAX MAP 16-1166

Plot Date: July 14, 2010

Legend

- Parcel Lines
- Creek Parcel Lines
- City Limit Lines
- ROW Lines
- School Tax Exempt
- Parcels Inside Landlot
- Parcels Outside Landlot
- Cobb County Parcels
- Unidentified Parcels

Reference Area:

16-1140	16-1139	16-1138
16-1165	16-1166	16-1167
16-1212	16-1211	16-1210



1 = 100 Feet

DISCLAIMER NOTE: This map is prepared for the inventory of real property found within this jurisdiction and is compiled from aerial photography, recorded deeds, plats, and other imagery, data and public records. Users of this map are hereby notified that the aforementioned primary public information sources should be consulted for verification of the information contained on this map. This jurisdiction, and the mapping companies involved in preparing it, assume no legal responsibilities for the information contained on this map.

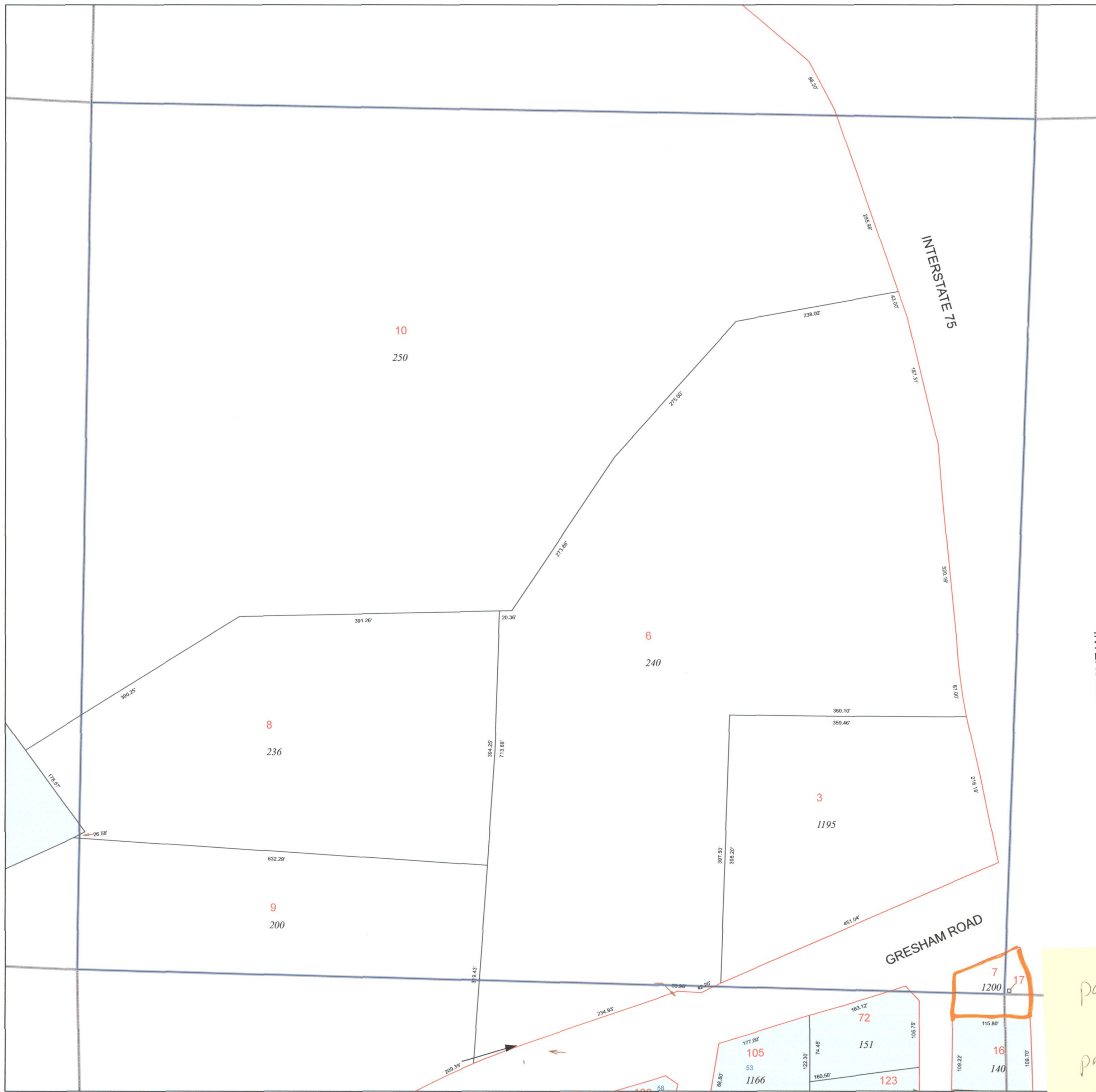
Coordinate System based on Georgia State Plane System.
West Zone - NAD83

CITY OF
Marietta
GEORGIA

GIS Department
1000 West - Marietta, Georgia 30060
www.mariettaga.gov

*Parcel 7
Size correction*

*parcel 16-1167-17
Split out of
parcel 7*



X