

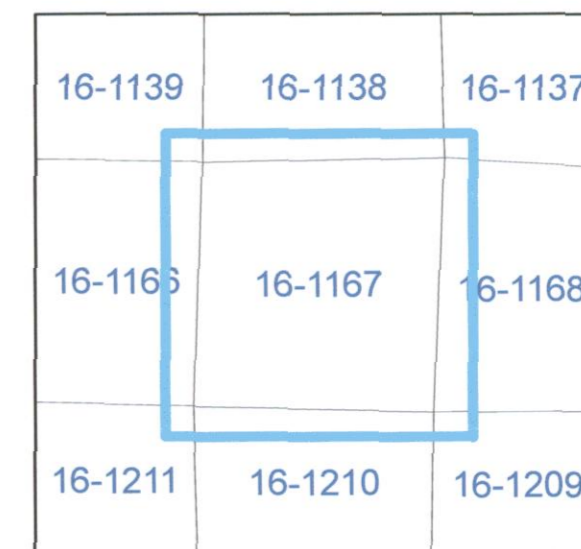
TAX MAP 16-1167

Plot Date: August 12, 2010

Legend

-  Parcel Lines
-  Creek Parcel Lines
-  City Limit Lines
-  ROW Lines
-  School Tax Exempt
-  Parcels Inside Landlot
-  Parcels Outside Landlot
-  Cobb County Parcels
-  Unidentified Parcels

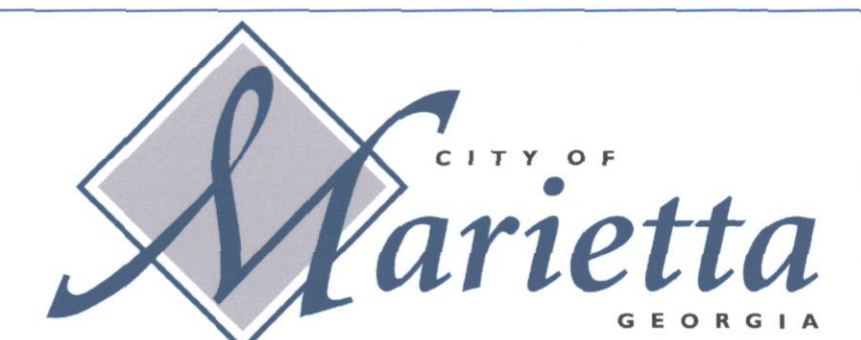
Reference Area:



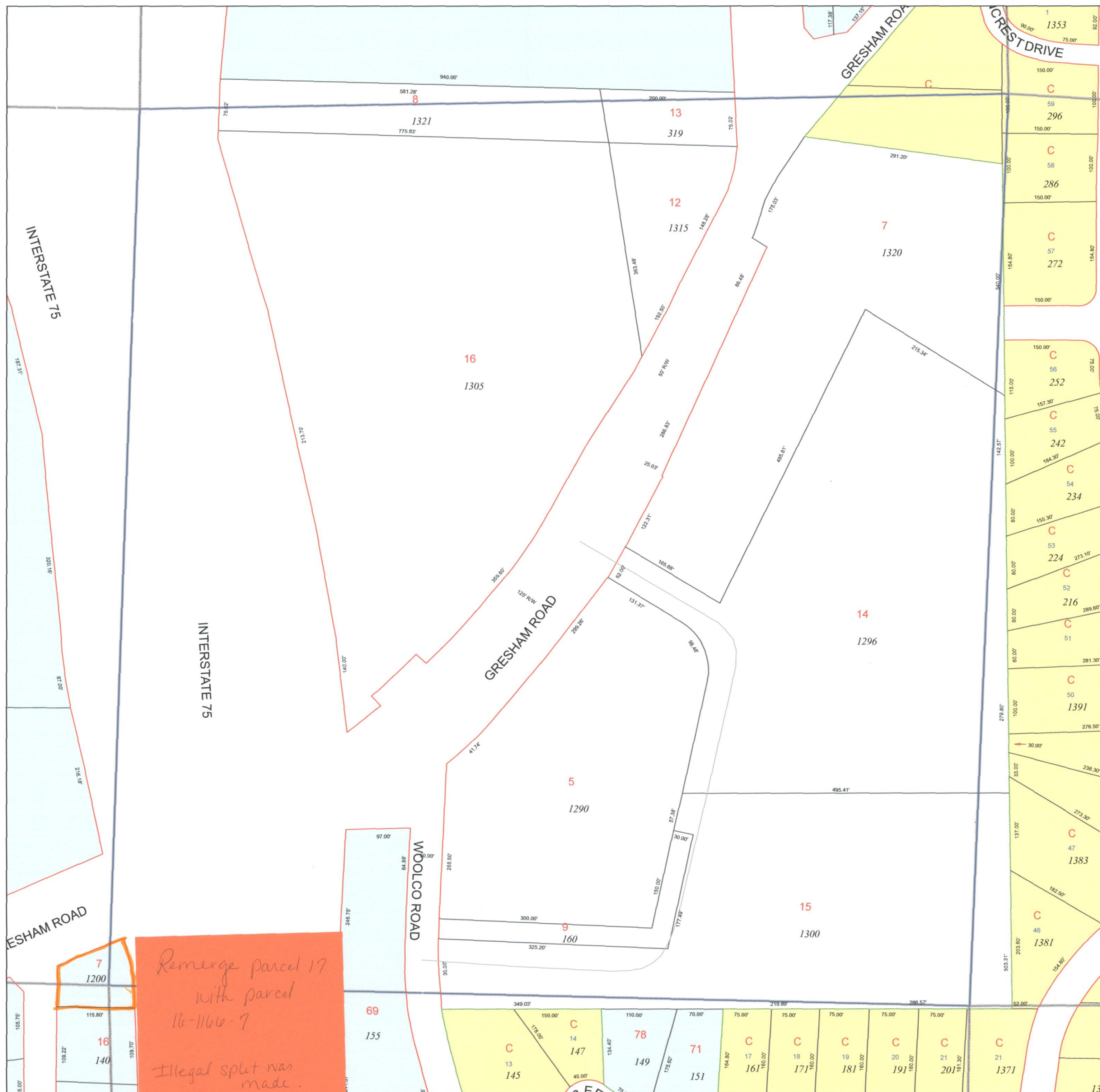
1 = 100 Feet

DISCLAIMER NOTE: This map is prepared for the inventory of real property found within this jurisdiction and is compiled from aerial photography, recorded deeds, plats, and other imagery, data and public records. Users of this map are hereby notified that the aforementioned primary public information sources should be consulted for verification of the information contained on this map. This jurisdiction, and the mapping companies involved in preparing it, assume no legal responsibilities for the information contained on this map.

Coordinate System based on Georgia State Plane System.
West Zone - NAD83



GIS Department
205 Lawrence Street - Marietta, Georgia 30060
www.mariettaga.gov



Remerge parcel 17
with parcel
16-1166-7

 Illegal split was
made.

 Contacted Cobb City
to correct as well.