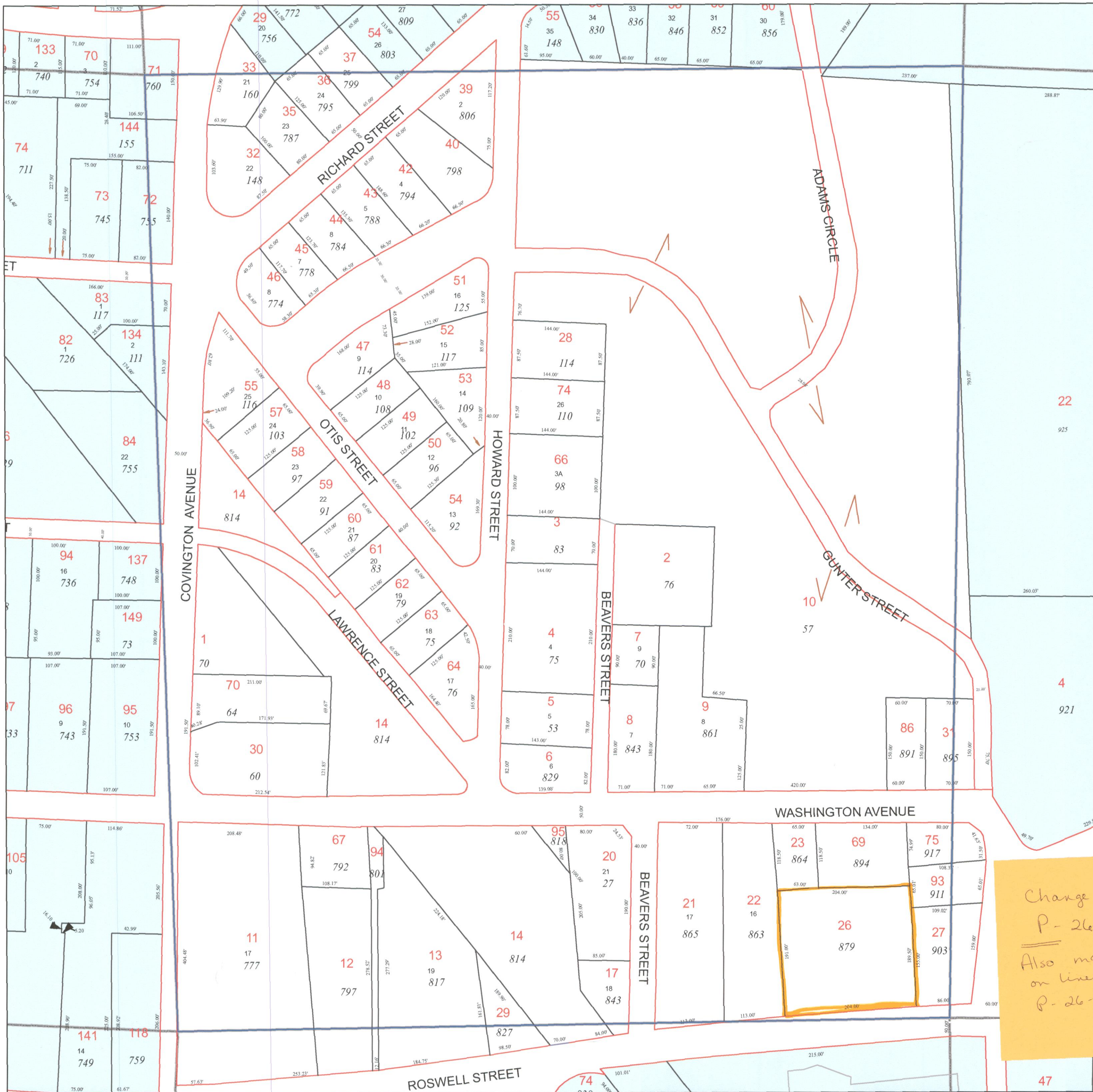


# TAX MAP 16-1213

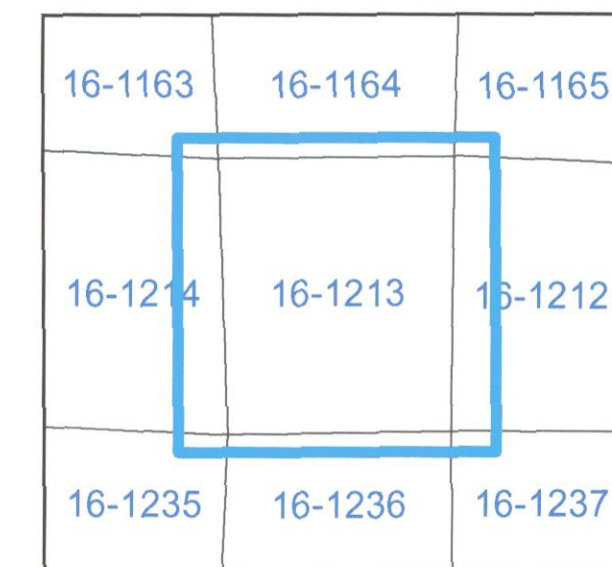
Plot Date: December 17, 2008



**Legend**

- Parcel Lines
- Creek Parcel Lines
- City Limit Lines
- ROW Lines
- School Tax Exempt
- Parcels Inside Landlot
- Parcels Outside Landlot
- Cobb County Parcels
- Unidentified Parcels

Reference Area:



1 = 100 Feet

**DISCLAIMER NOTE:** This map is prepared for the inventory of real property found within this jurisdiction and is compiled from aerial photography, recorded deeds, plats, and other imagery, data and public records. Users of this map are hereby notified that the aforementioned primary public information sources should be consulted for verification of the information contained on this map. This jurisdiction, and the mapping companies involved in preparing it, assume no legal responsibilities for the information contained on this map.

Coordinate System based on Georgia State Plane System. West Zone - NAD83

Change of address  
P-26 to 879  
Also map correction  
on line work at  
P-26- P-27  
Miller



GIS Department  
Ponce Street - Marietta, Georgia 30060

[www.mariettaga.gov](http://www.mariettaga.gov)