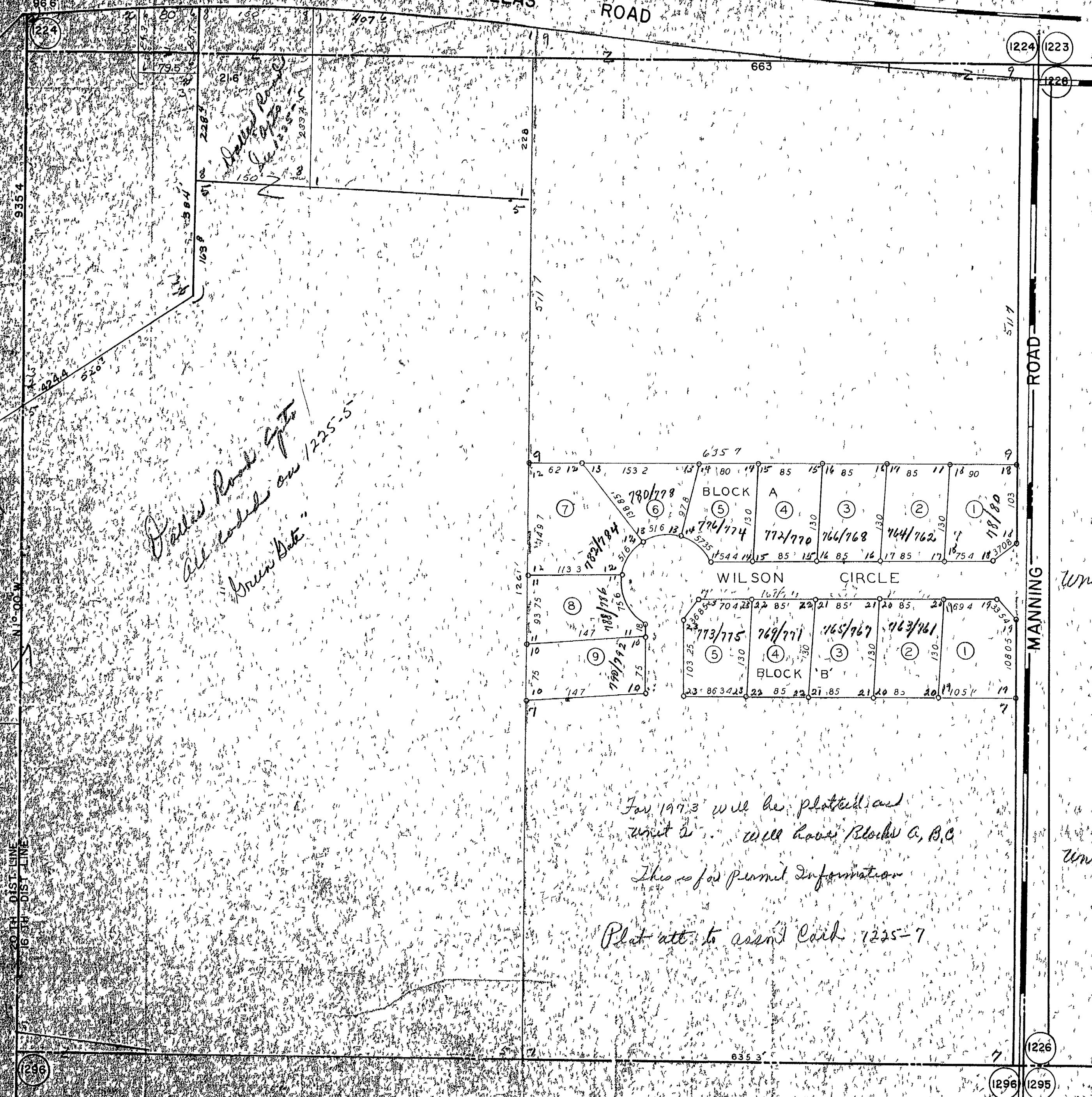


LL1225-16

DALLAS ROAD



*Dallas Road Etc  
 all included on 1225-5  
 Annex B etc*

*For 1973 will be platified and  
 Unit A will have Blocks A, B, C  
 Also see parcel information  
 Plat att to assn's Cch. 1225-7*

*Unit I*

*Unit II*

1226  
1296 1299

PLAT 3-31-73