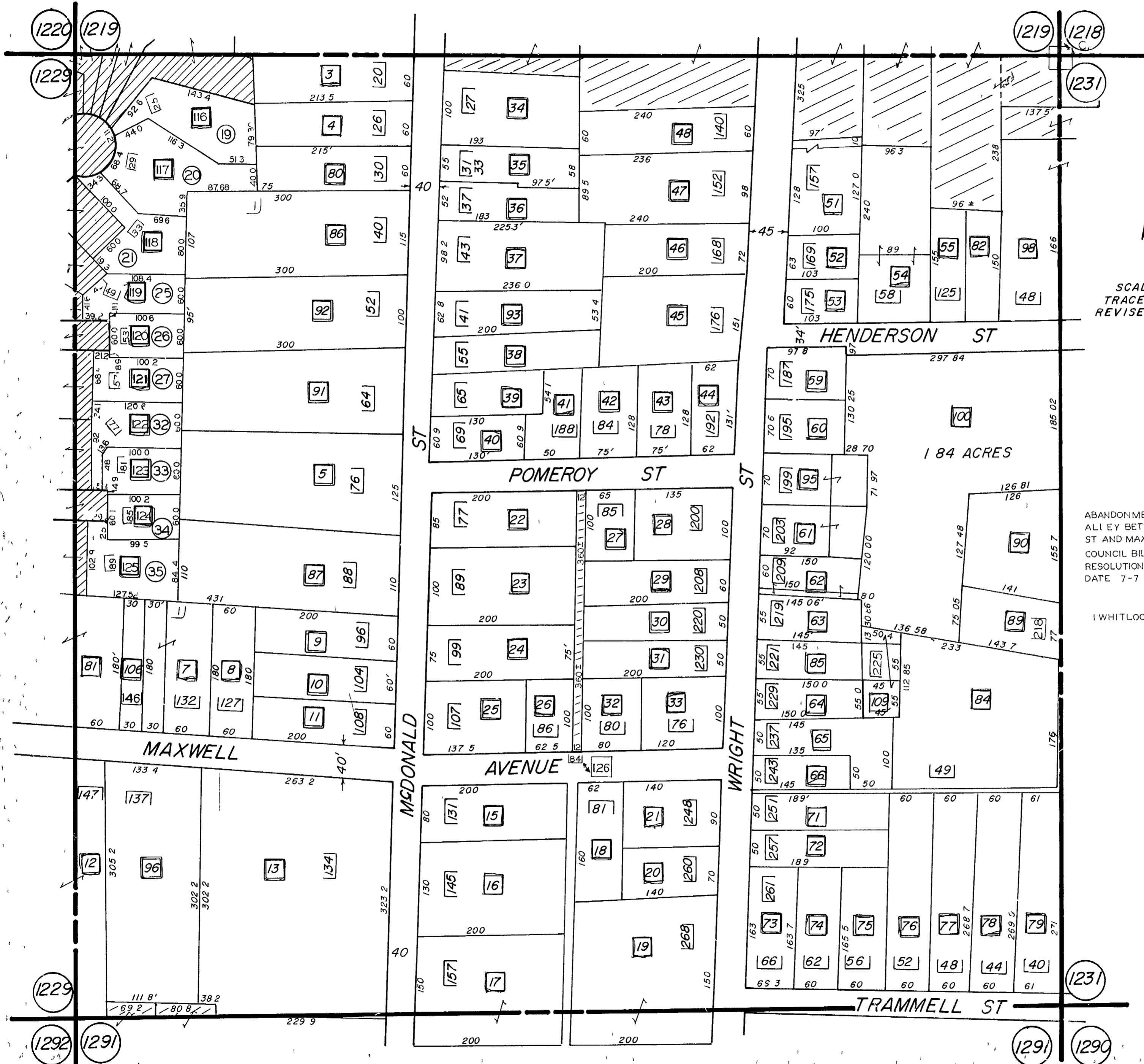


L.L. 1230 - 16TH DIST.



SCALE 1" = 100'
 TRACED 11-2-82 JA
 REVISED 3-24-65

5-8-89
 11-3-89
 2-21-90
 5-31-90
 6-28-90
 8-20-90

ABANDONMENT OF AN
 ALLEY BETWEEN POMEROY
 ST AND MAXWELL AVE
 COUNCIL BILL 294189
 RESOLUTION No 89-818
 DATE 7-7-89

WHITLOCK SQUARE