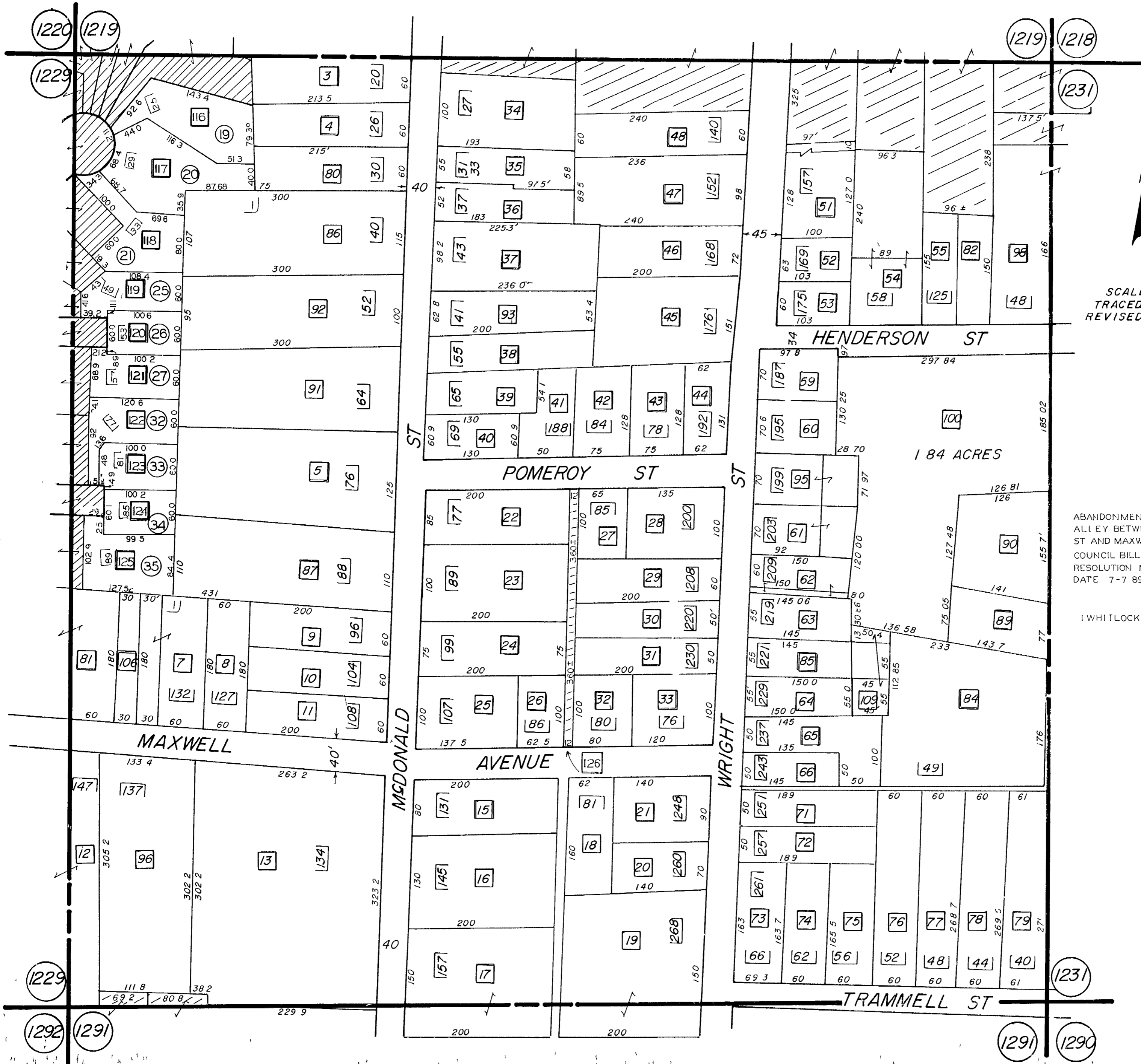


L.L. 1230 - 16TH DIST.



SCALE 1"=100'
 TRACED 11-2-82 JA
 REVISED 3-24-65



- 5 8- 89
- 11 3- 89
- 2-21 90
- 5 31 90
- 6 28 90

ABANDONMENT OF AN
 ALLEY BETWEEN POMEROY
 ST AND MAXWELL AVE
 COUNCIL BILL 294189
 RESOLUTION No 89-818
 DATE 7-7 89

1 WHITLOCK SQUARE