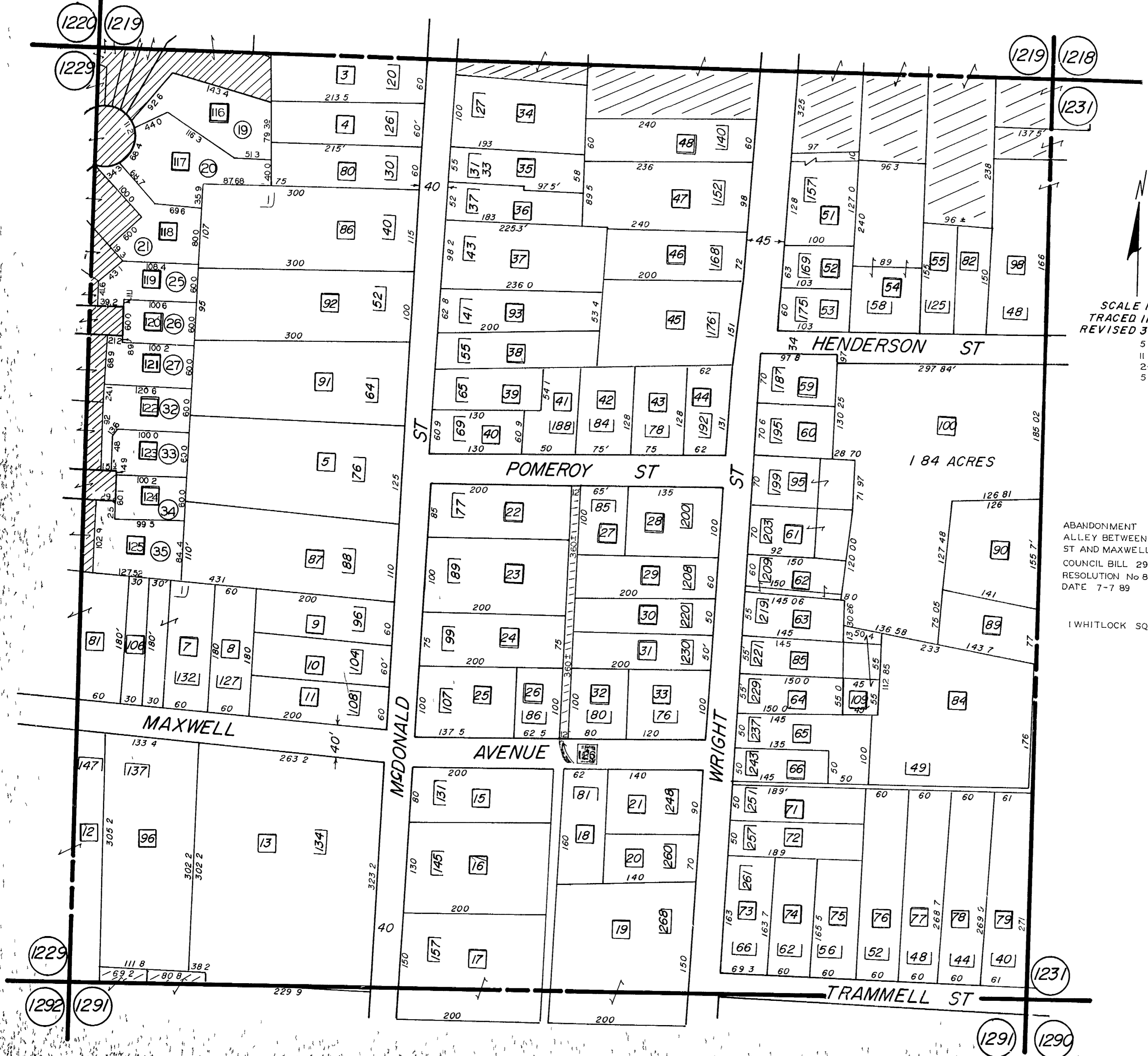


L.L. 1230 - 16TH DIST.



SCALE 1"=100'
 TRACED 11-2-82 JA
 REVISED 3-24-65

ABANDONMENT OF AN ALLEY BETWEEN POMEROY ST AND MAXWELL AVE
 COUNCIL BILL 294189
 RESOLUTION No 89-818
 DATE 7-7 89

1 WHITLOCK SQUARE