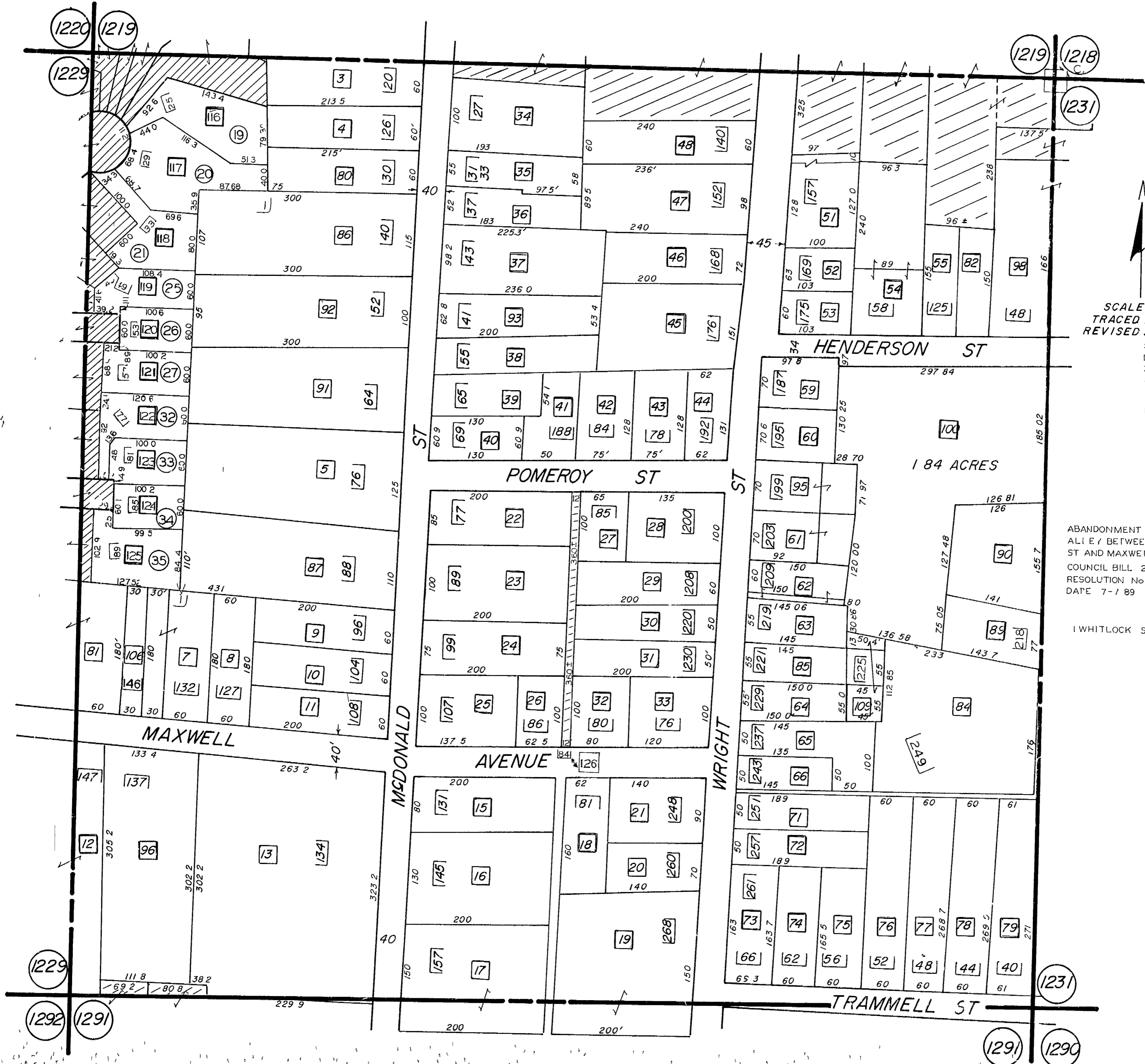


# L.L. 1230 - 16TH DIST.



SCALE 1" = 100'  
 TRACED 11-2-82 JA  
 REVISED 3-24-65

ABANDONMENT OF AN  
 ALIEN BETWEEN POMEROY  
 ST AND MAXWELL AVE  
 COUNCIL BILL 294189  
 RESOLUTION No 89-618  
 DATE 7-1-89

1 WHITLOCK SQUARE