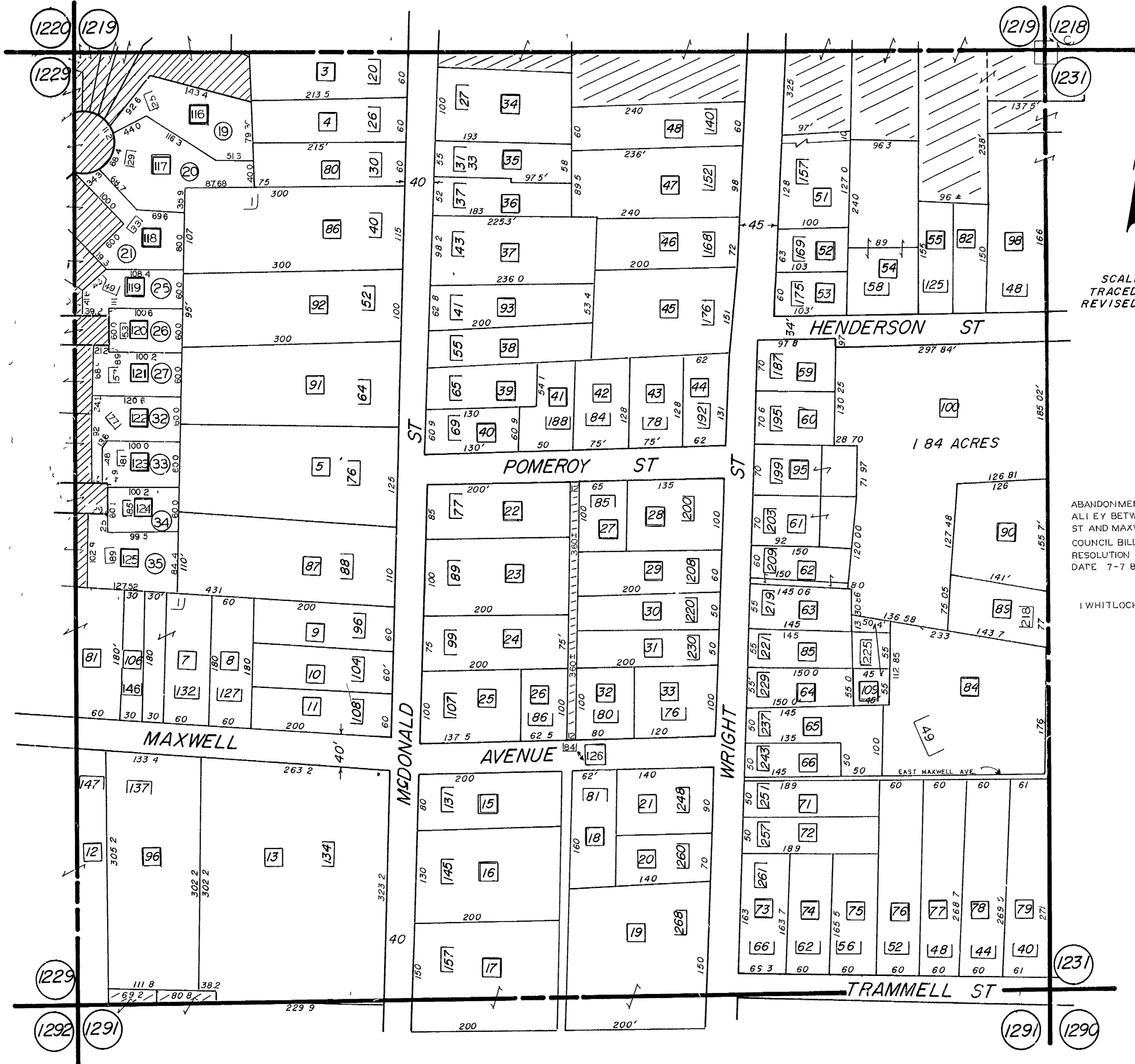


# L.L. 1230 - 16TH DIST.



SCALE 1"=100'  
 TRACED 11-2-82 JA  
 REVISED 3-24-65

- 5-8-89
- 11-3-89
- 2-21-90
- 5-31-90
- 6-28-90
- 8-20-90
- 11-17-92
- 9-16-93

ABANDONMENT OF AN  
 ALLEY BETWEEN POMEROY  
 ST AND MAXWELL AVE  
 COUNCIL BILL 294189  
 RESOLUTION No 89-818  
 DATE 7-7 89

1 WHITLOCK SQUARE