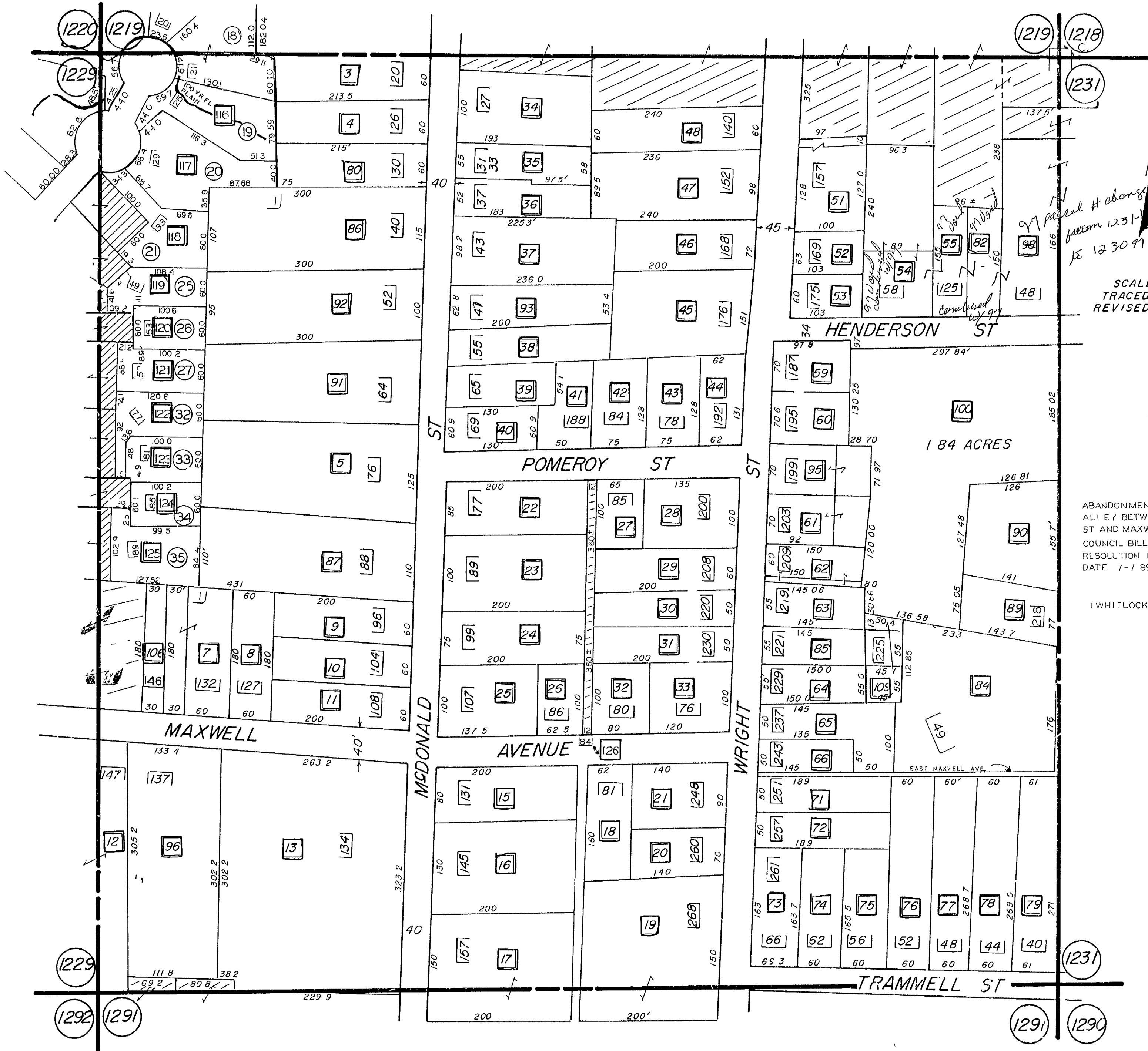


L.L. 1230 - 16TH DIST.



SCALE 1" = 100'
 TRACED 11-2-82 JA
 REVISED 3-24-65

- 5 8-80
- 11 3-80
- 2-21 90
- 5 31 90
- 6 28 90
- 8-20 90
- 11-17-92
- 9-16 93
- 1 2-94
- 9-27-94

ABANDONMENT OF AN
 ALLEY BETWEEN POMEROY
 ST AND MAXWELL AVE
 COUNCIL BILL 294189
 RESOLUTION No 89-818
 DATE 7-1 89

1 WHITLOCK SQUARE

97 parcel # above
 from 1231-
 is 1230 97

EAST MAXWELL AVE.