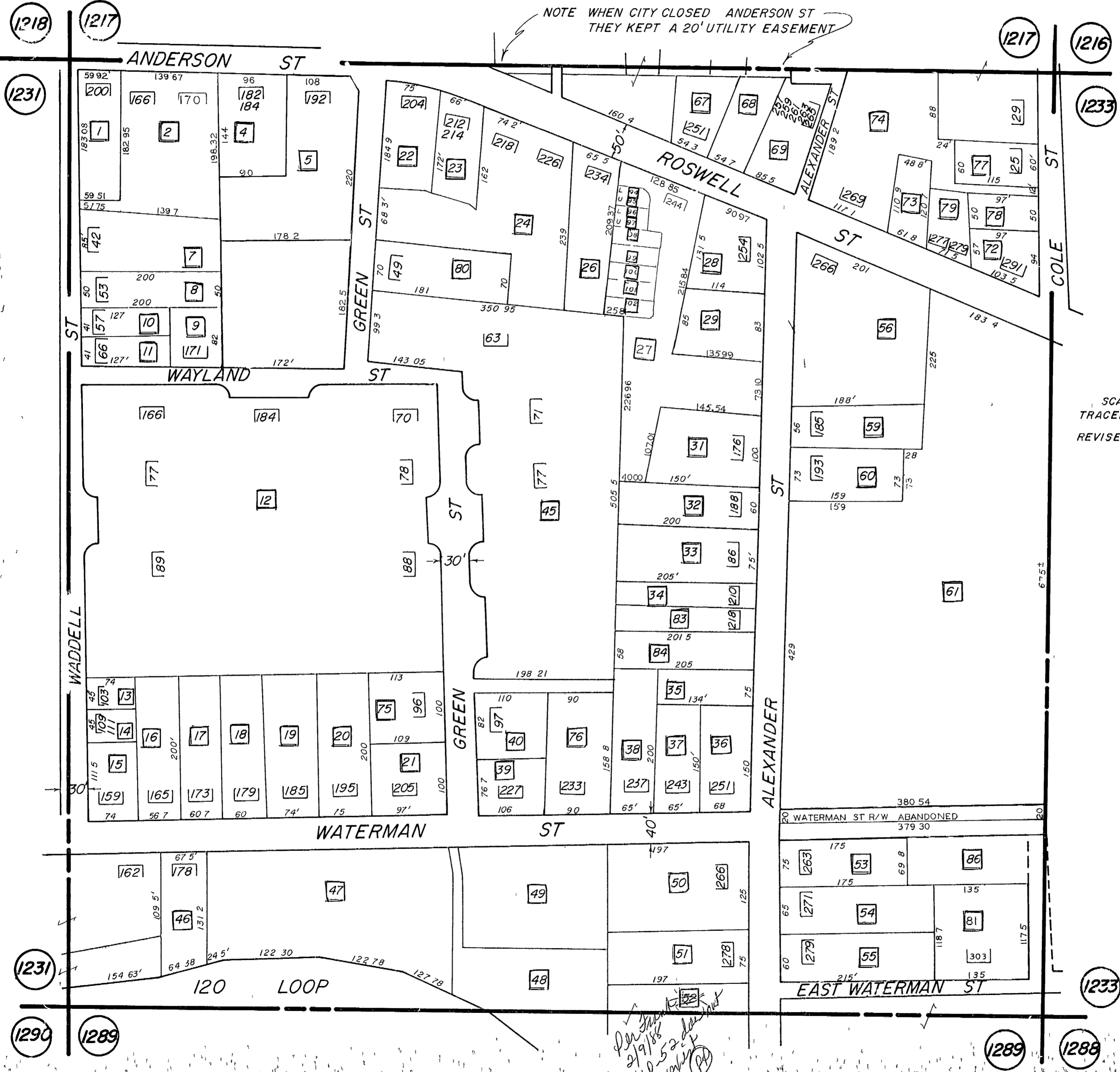


L.L. 1232 - 16TH DIST.

NOTE WHEN CITY CLOSED ANDERSON ST
THEY KEPT A 20' UTILITY EASEMENT



SCALE 1" = 100'
TRACED 11-8-82 JA.
REVISED 3-24-65
4 29 87
7-23-87
11 11-87

Don Smith
2/9/88
P-52 done
19/88
PA