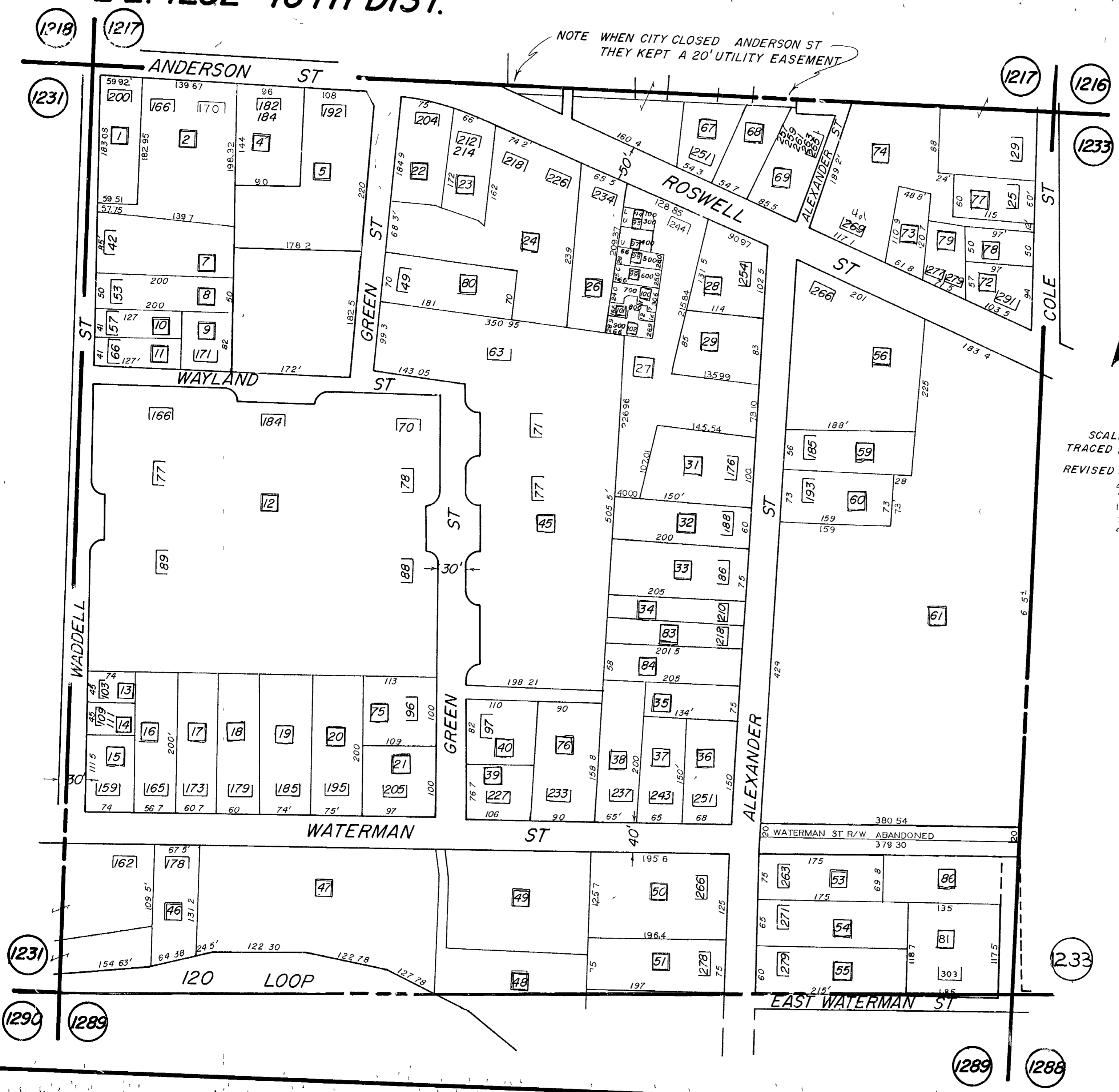


L L. 1232 - 16TH DIST.

NOTE WHEN CITY CLOSED ANDERSON ST THEY KEPT A 20' UTILITY EASEMENT



SCALE 1" = 100'
 TRACED 11-8-82 JA
 REVISED 3-24-65
 4 29 87
 7-23-87
 11 11- 87
 2 8- 88
 4 18 88