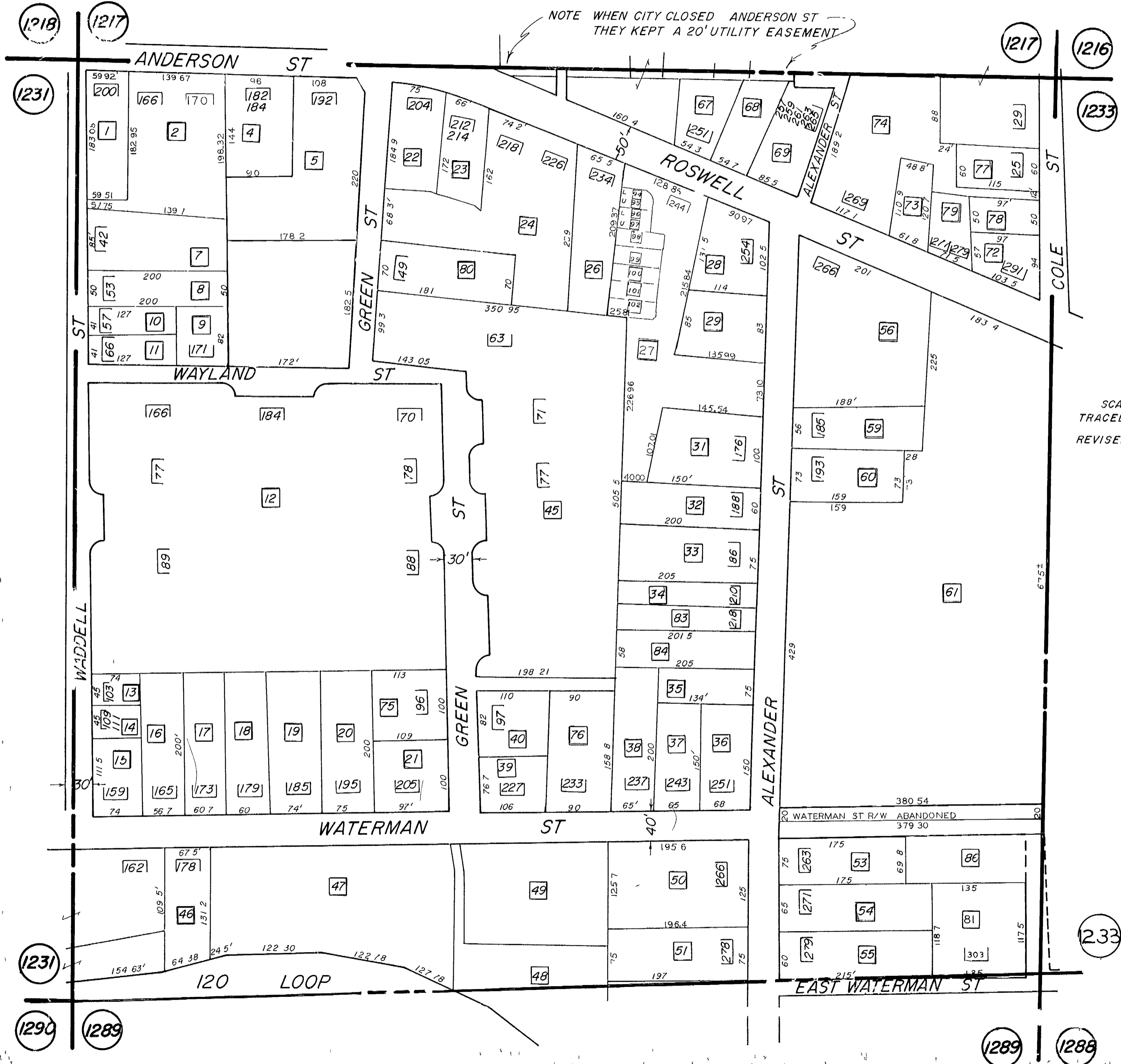


# L.L. 1232-16TH DIST.

NOTE WHEN CITY CLOSED ANDERSON ST  
THEY KEPT A 20' UTILITY EASEMENT



SCALE 1"=100'  
 TRACED 11-8-82 JA.  
 REVISED 3-24-65  
 4 29 87  
 7-23 87  
 11 11- 87  
 2 8- 88