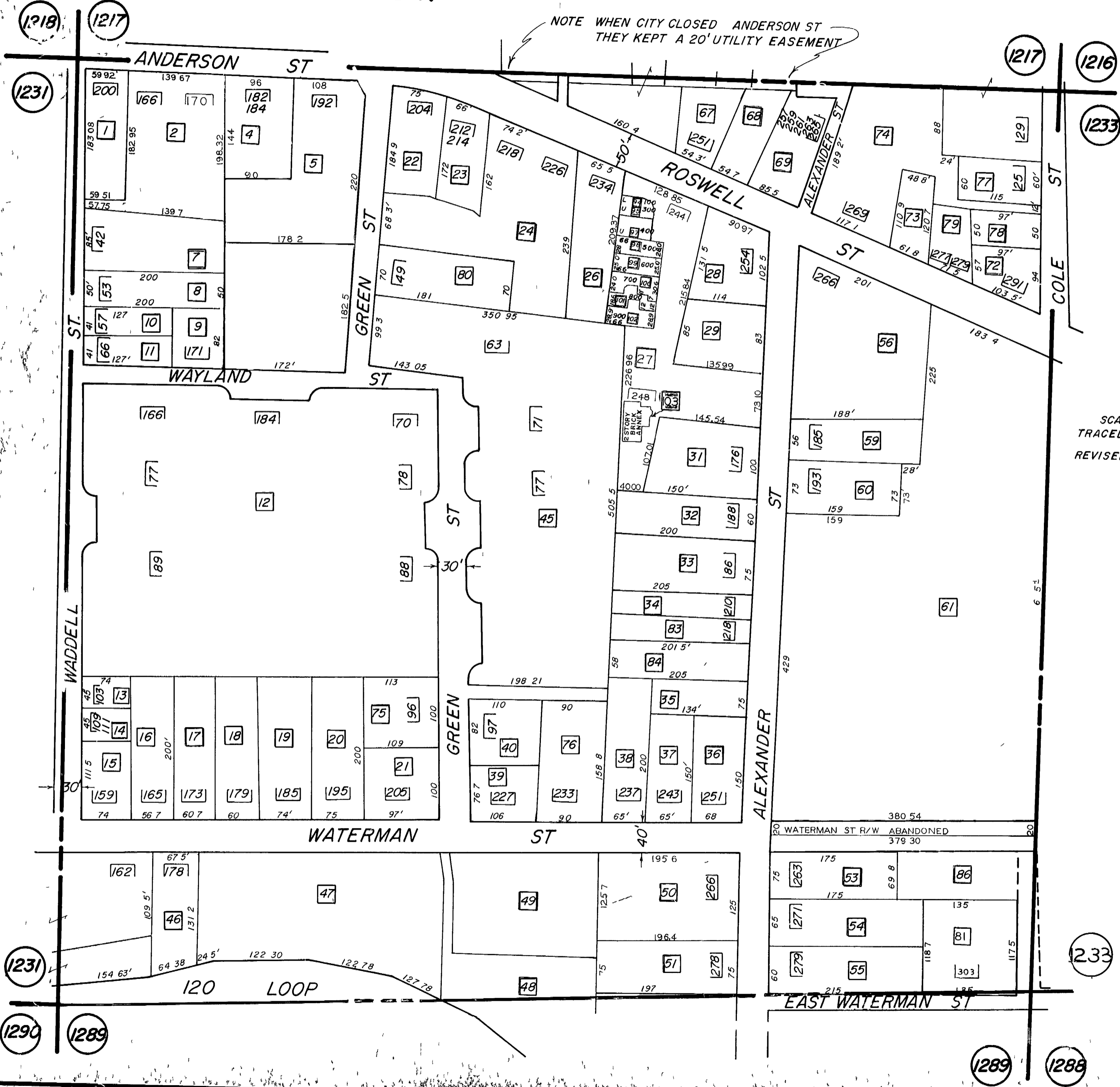


# L.L. 1232-16TH DIST.

NOTE WHEN CITY CLOSED ANDERSON ST  
THEY KEPT A 20' UTILITY EASEMENT



SCALE 1" = 100'  
 TRACED 11-8-82 JA.  
 REVISED 3-24-65  
 4-29-87  
 7-23-87  
 11-11-87  
 2-8-88  
 4-18-88  
 4-4-89  
 6-8-89

