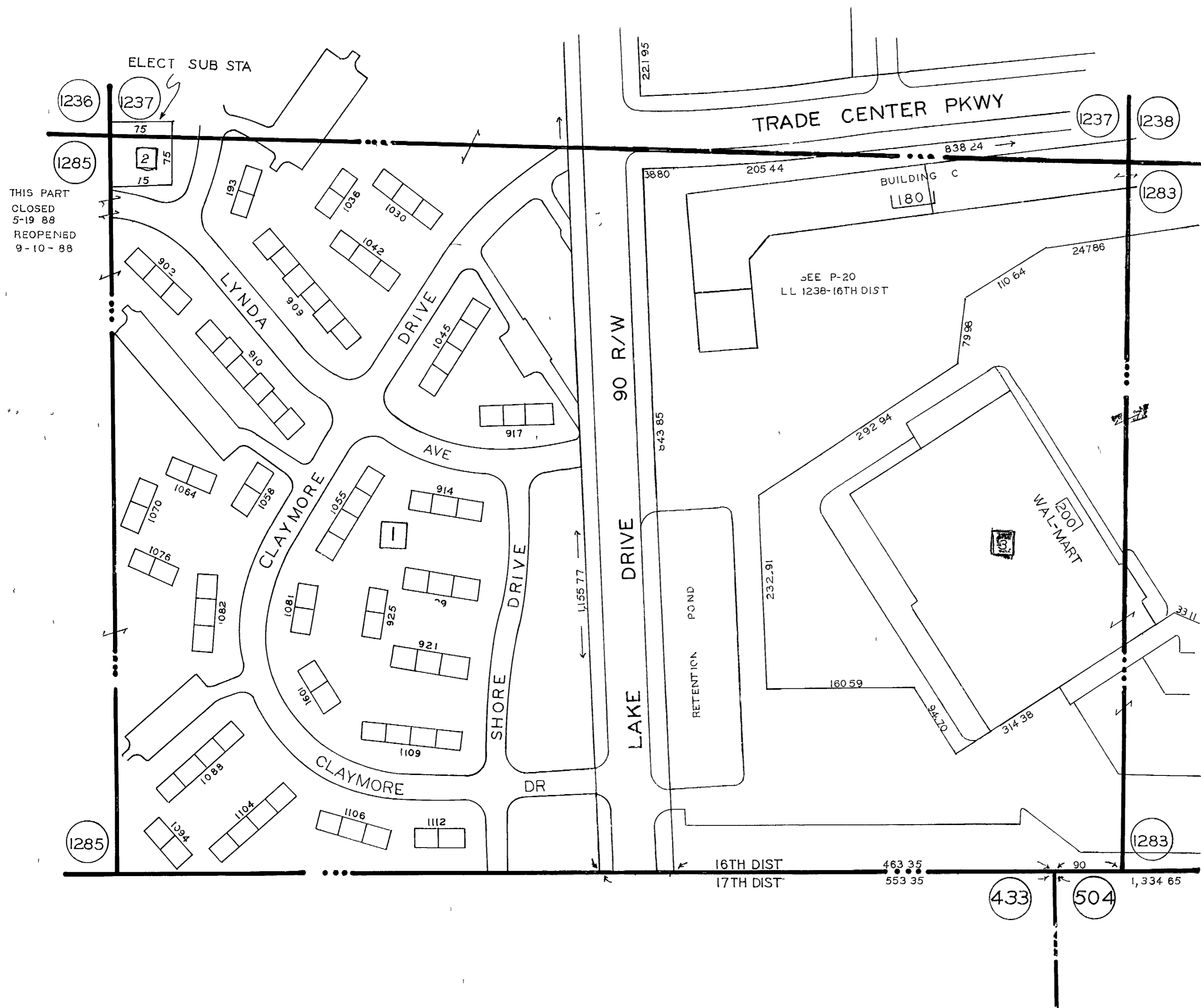


L.L. 1284 - 16 TH. DIST.

NOTE
 LYNDA AVE CLOSURE
 SEE L.L. 1285-16TH FOR
 INFORMATION
 RE OPENED 9-10-88



THIS PART
 CLOSED
 5-19-88
 REOPENED
 9-10-88

SCALE 1" = 100'
 REVISED 7-1-83
 3-8-88
 5-19-88
 9-10-88
 9-12-88
 6-16-89

1236 1237 1238
 1285 1283
 ELECT SUB STA
 TRADE CENTER PKWY
 BUILDING C
 SEE P-20
 L.L. 1238-16TH DIST
 WAL-MART
 RETENTION POND
 16TH DIST
 17TH DIST
 4.33 504