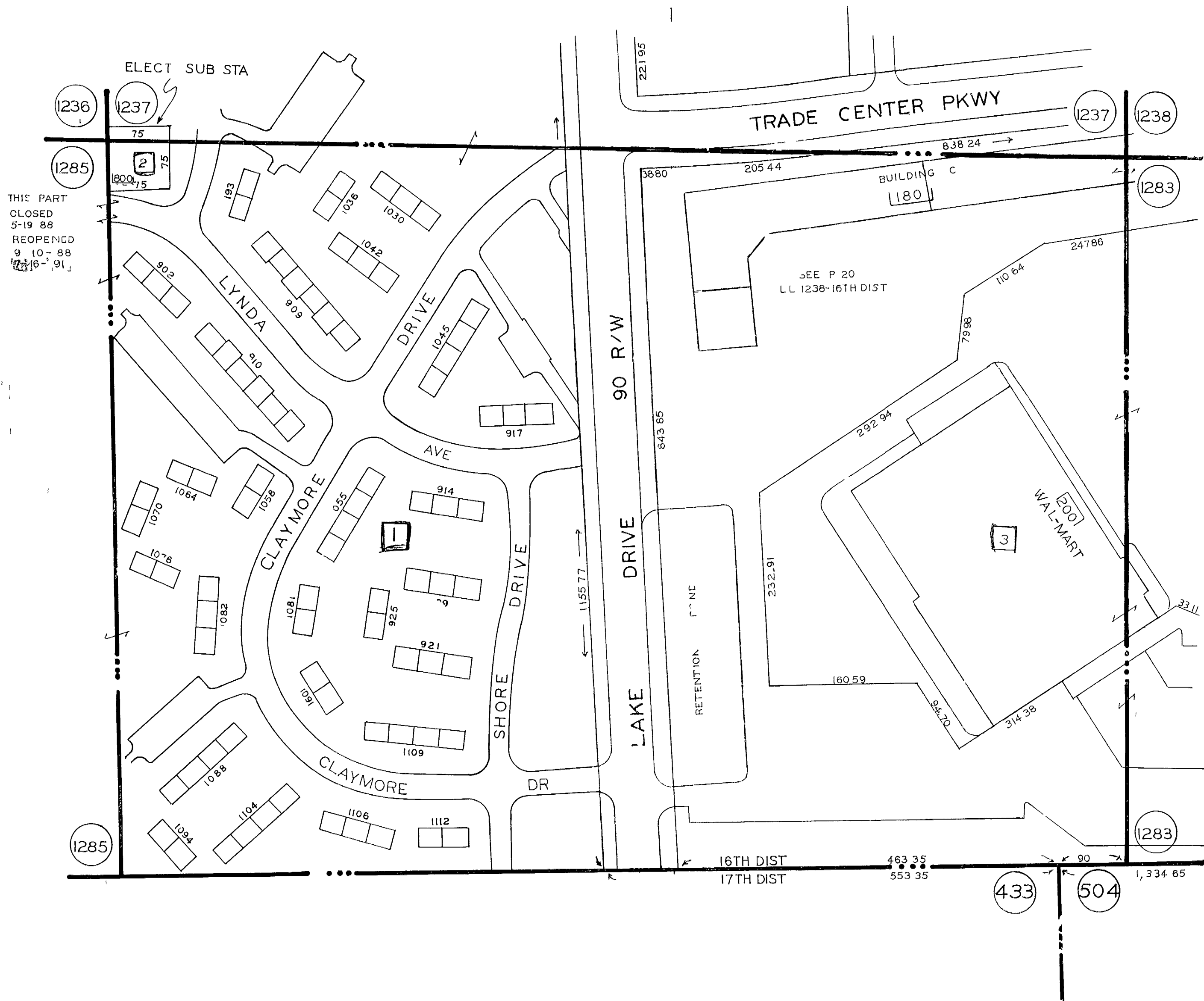


L.L. 1284 - 16 TH. DIST.

NOTE
 LYNDA AVE CLOSURE
 SEE L.L. 1285-16TH FOR
 INFORMATION
 REOPENED 9-10-88



THIS PART
 CLOSED
 5-19-88
 REOPENED
 9-10-88
 12-16-91

SCALE 1" = 100'
 REVISED 7-1-83
 3-8-88
 5-19-88
 9-10-88
 9-12-88
 6-16-89
 8-13-90

433 504