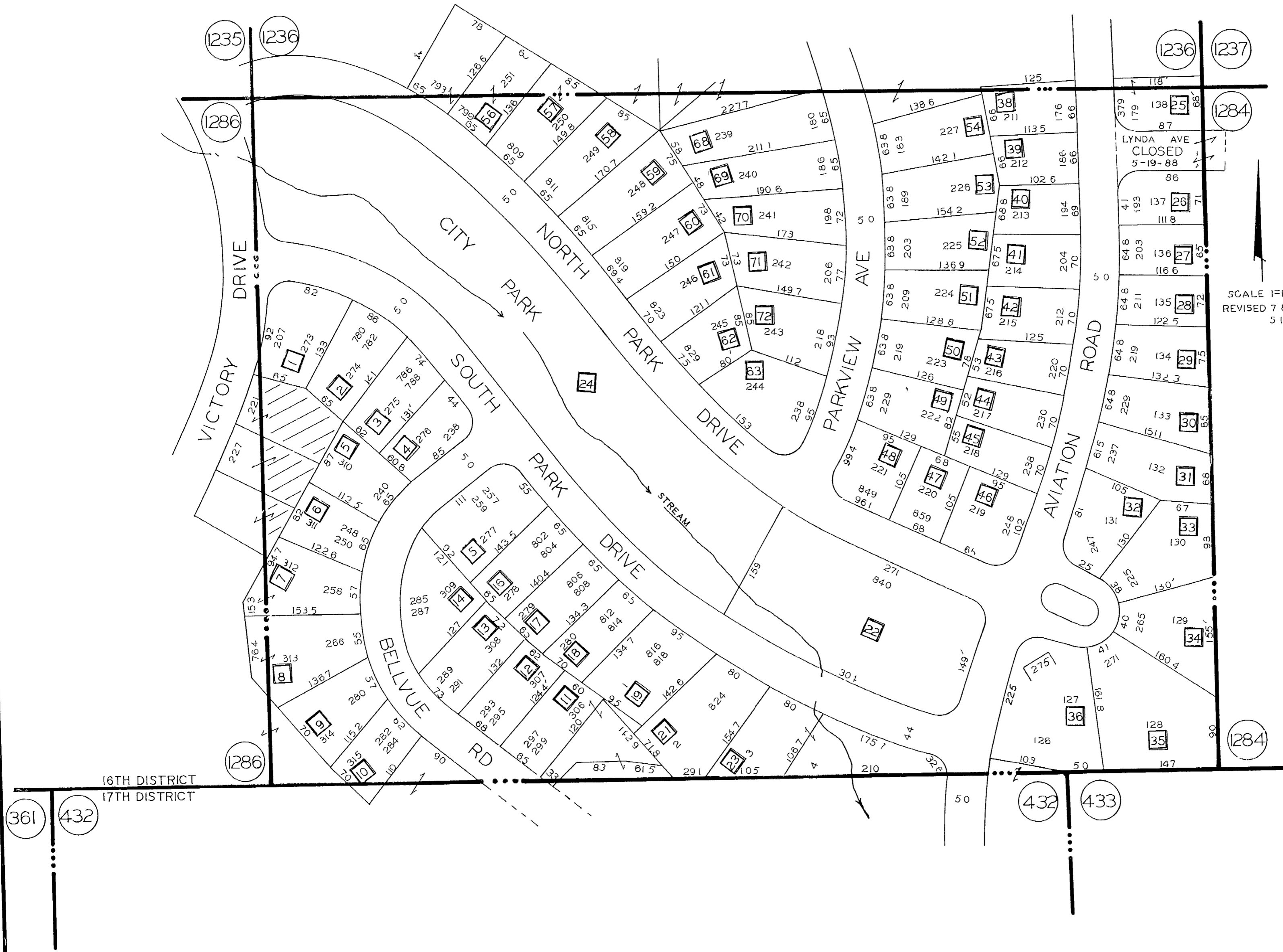


# L.L. 1285 -16 TH. DIST.

NOTE  
LYNDA AVE CLOSURE  
COUNCIL BILL No 279888  
RESOLUTION No 88-754  
DATE 5-19-88



LYNDA AVE  
CLOSED  
5-19-88

SCALE 1"=100'  
REVISED 7 8 83  
5 19-88

16TH DISTRICT  
17TH DISTRICT

361 432

432 433

1235 1236

1236 1237

1286

1284

1286

1284