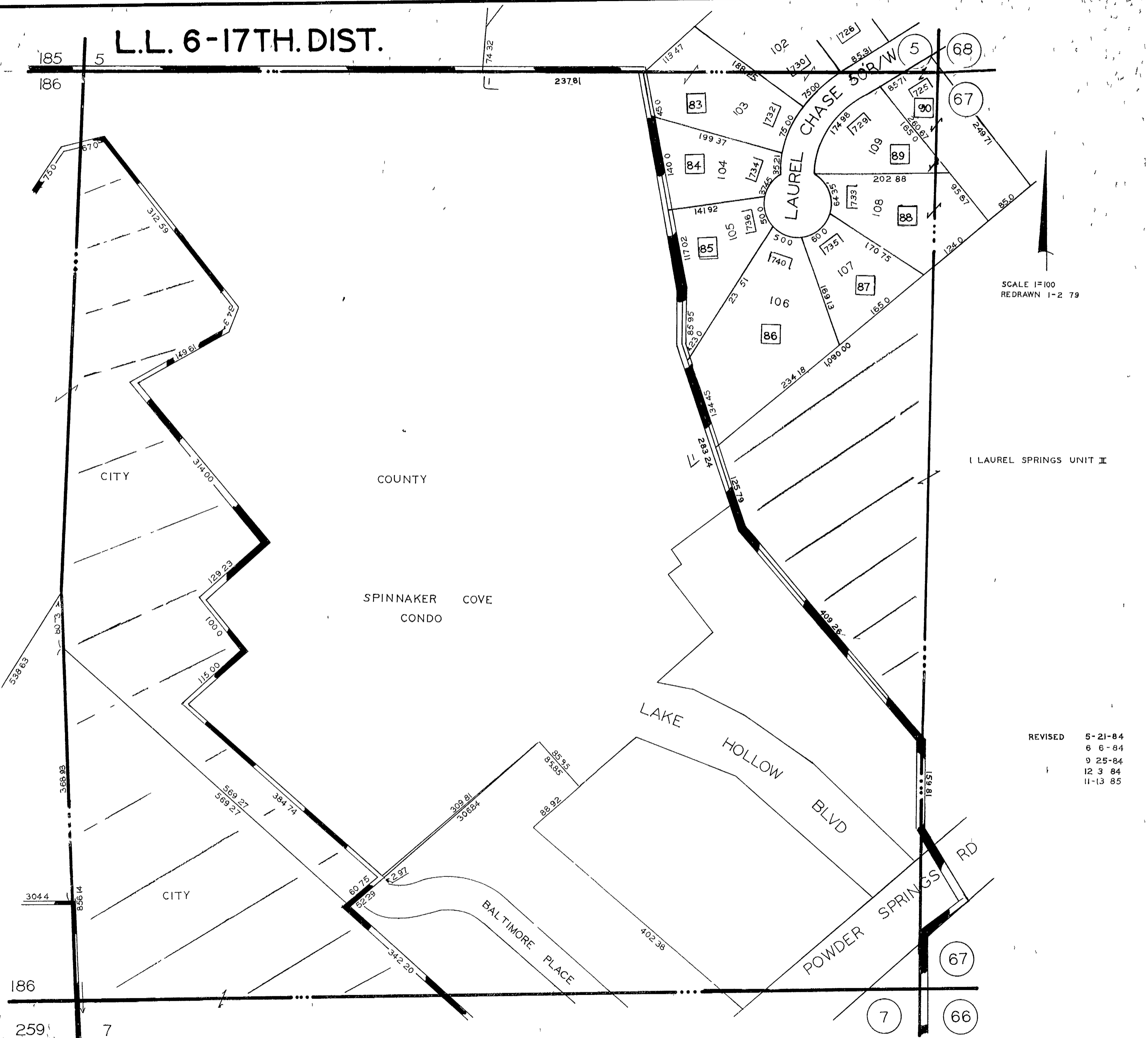


# L.L. 6-17TH.DIST.



SCALE 1"=100'  
REDRAWN 1-2 79

LAUREL SPRINGS UNIT II

REVISED 5-21-84  
6-6-84  
9-25-84  
12-3-84  
11-13-85

185  
186

5

74 32

237.81

102

5

68

67

CITY

COUNTY

SPINNAKER COVE  
CONDO

LAKE HOLLOW  
BLVD

POWDER SPRINGS  
RD

CITY

186

259

7

7

67

66