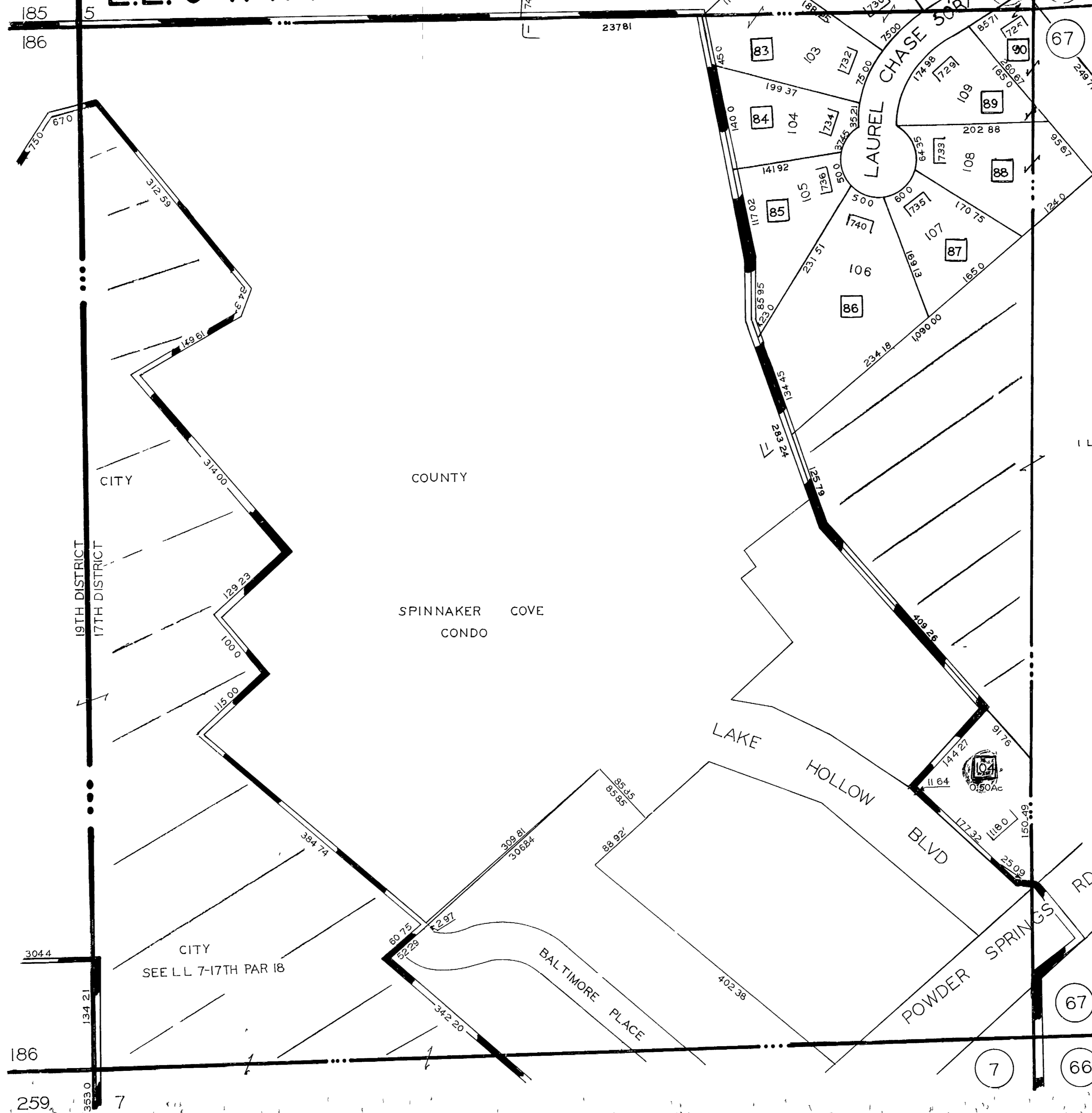


# L.L. 6-17TH.DIST.



SCALE 1"=100'  
REDRAWN 1-2 79

I LAUREL SPRINGS UNIT II

REVISED 5-21-84  
6 6 84  
9 25-84  
12 3 84  
11 13 85  
10 2-86  
4 4-89  
2-13-91  
8-11-92

*Per Elmer  
Jaco Bell Corp  
#4431  
P.O. Box 96  
Fair Lawn  
Annapolis*

185  
186

186  
259

19TH DISTRICT  
17TH DISTRICT

CITY

COUNTY

SPINNAKER COVE  
CONDO

CITY  
SEE L.L. 7-17TH PAR 18

LAKE HOLLOW  
BLVD

POWDER SPRINGS  
RD

BALTIMORE PLACE