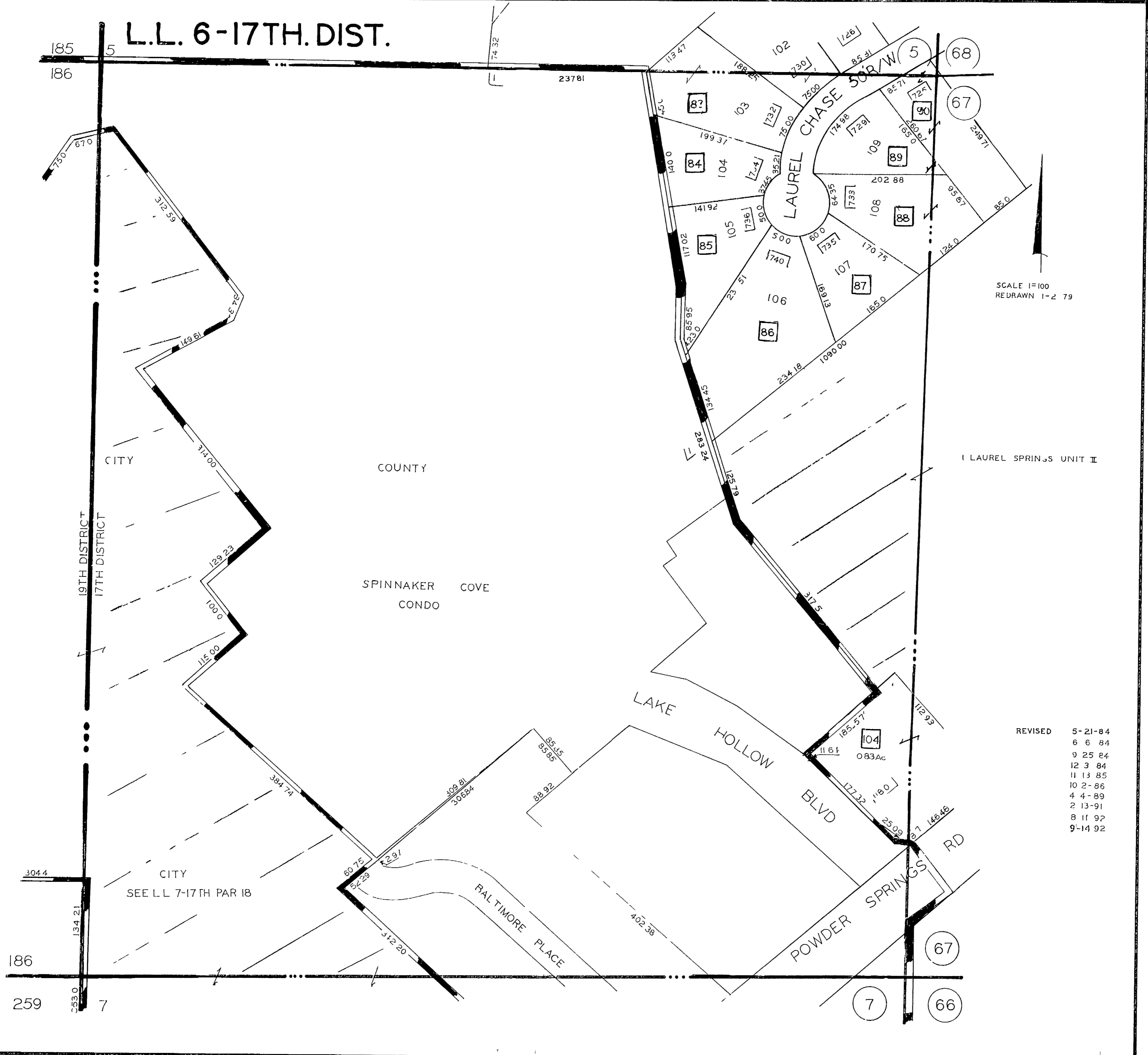


L.L. 6-17TH.DIST.



SCALE 1"=100'
REDRAWN 1-2-79

LAUREL SPRINGS UNIT II

- REVISED
- 5-21-84
 - 6-6-84
 - 9-25-84
 - 12-3-84
 - 11-13-85
 - 10-2-86
 - 4-4-89
 - 2-13-91
 - 8-11-92
 - 9-14-92

CITY
SEE L.L. 7-17TH PAR 18

SPINNAKER COVE
CONDO

LAKE HOLLOW
BLVD

POWDER SPRINGS
RD

BALTIMORE PLACE

7
67
66