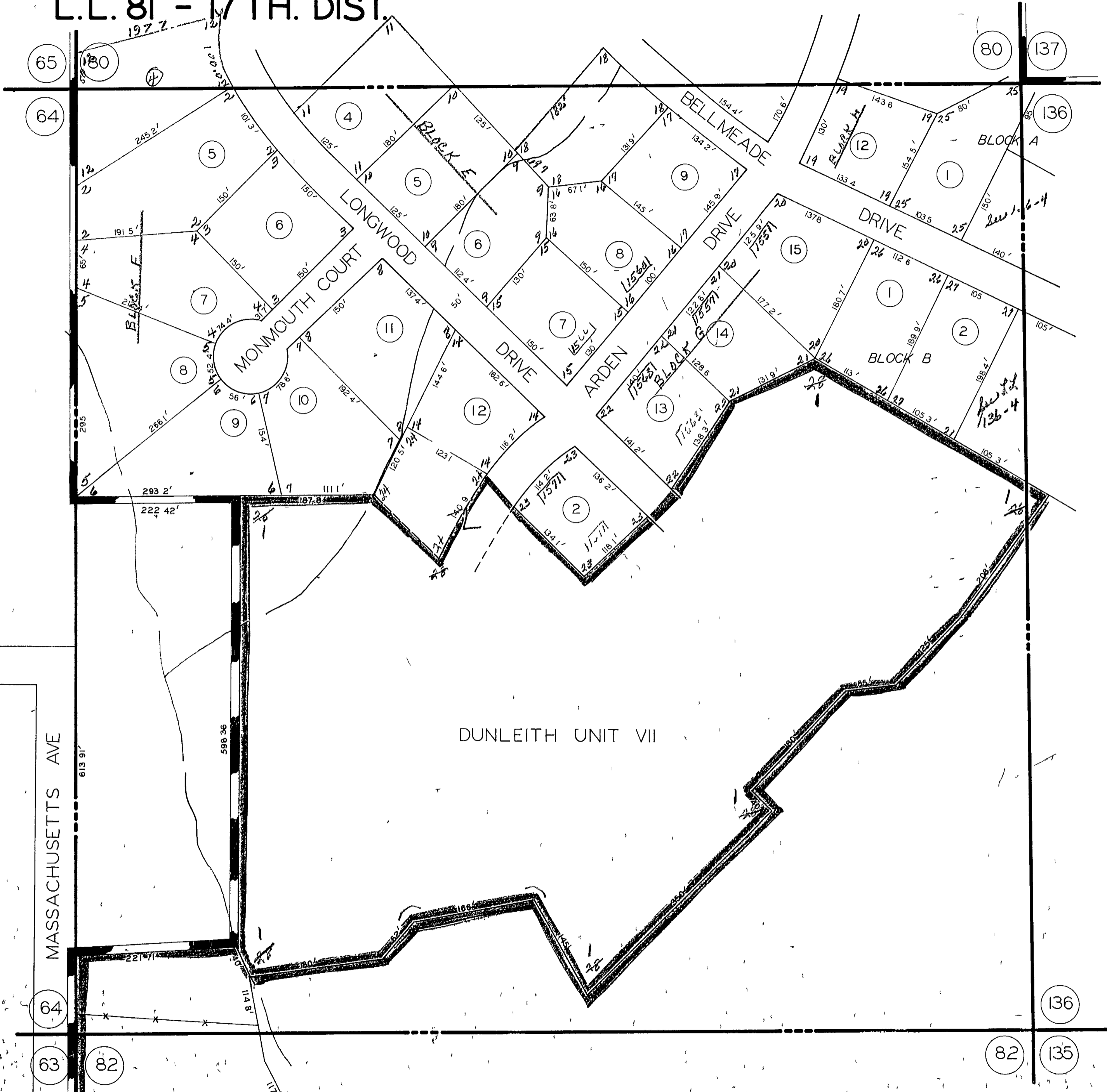


L.L. 81 - 17 TH. DIST.



MASSACHUSETTS AVE

MONMOUTH COURT

LONGWOOD DRIVE

ARDEN DRIVE

BELLMEADE DRIVE

DUNLEITH UNIT VII

LOT 30 COLONIAL PK SUB, 2

REVISED 1-3-77 1-17-78