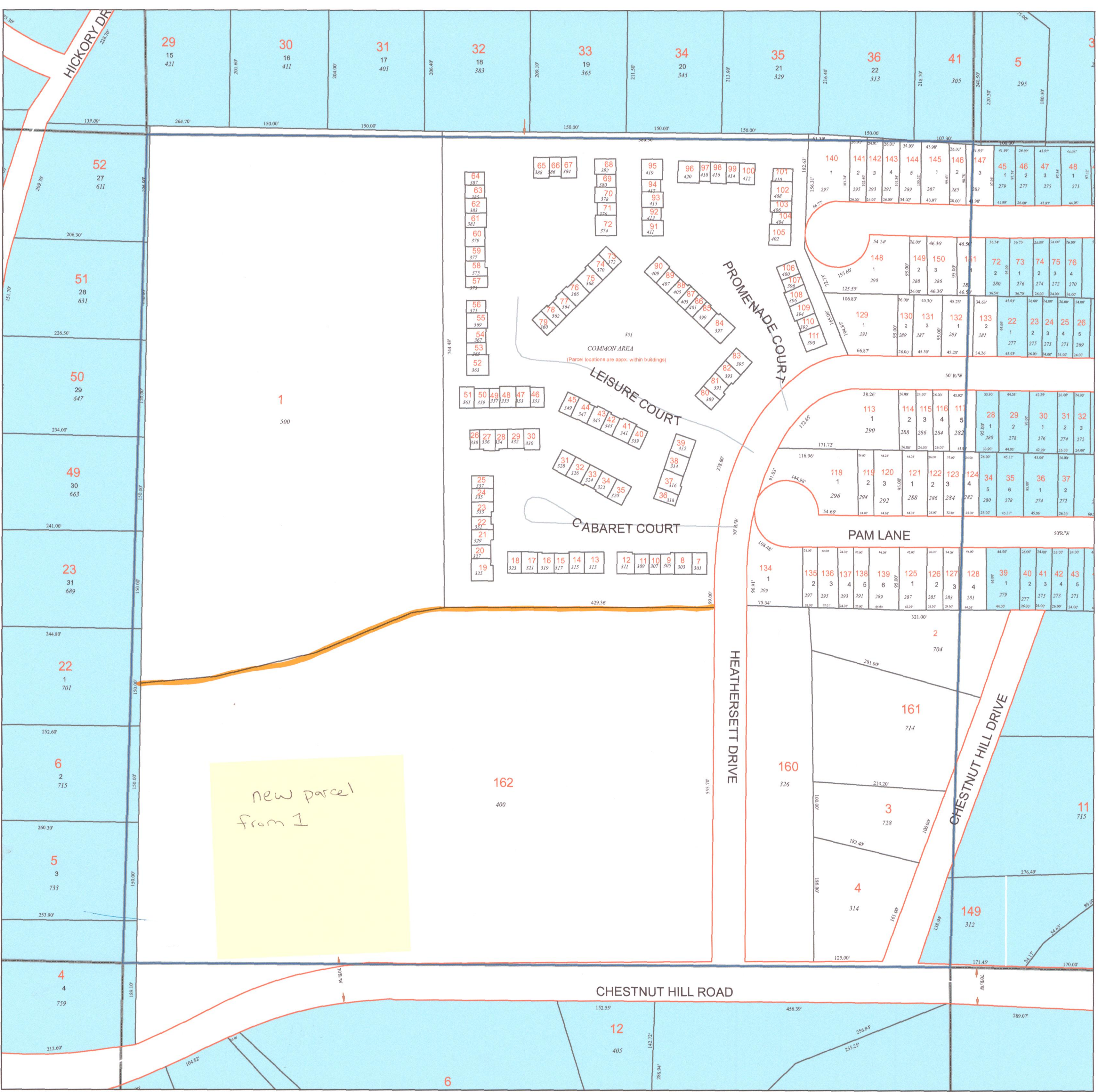


# TAX MAP 17-0142

Plot Date: December 4, 2006



**Legend**

- Parcel Lines
- Creek Parcel Lines
- City Limit Lines
- ROW Lines
- School Tax Exempt
- Parcels Inside Landlot
- 25 Parcel 15 Lot 1530 Address
- Parcels Outside Landlot
- Cobb County Parcels
- Unidentified Parcels

Reference Area:

17-0074	17-0143	17-0146
17-0075	17-0142	17-0147
17-0076	17-0141	17-0148



1 = 100 Feet

DISCLAIMER NOTE: This map is prepared for the inventory of real property found within this jurisdiction and is compiled from aerial photography, recorded deeds, plats, and other imagery, data and public records. Users of this map are hereby notified that the aforementioned primary public information sources should be consulted for verification of the information contained on this map. This jurisdiction, and the mapping companies involved in preparing it, assume no legal responsibilities for the information contained on this map.

Coordinate System based on Georgia State Plane System. West Zone - NAD83

GIS Department  
205 Lawrence Street - Marietta, Georgia 30060  
[www.mariettaga.gov](http://www.mariettaga.gov)