

TAX MAP 17-0215

Plot Date: March 15, 2010

Legend

- Parcel Lines
- Creek Parcel Lines
- City Limit Lines
- ROW Lines
- School Tax Exempt
- Parcels Inside Landlot
- Parcels Outside Landlot
- Cobb County Parcels
- Unidentified Parcels

Reference Area:

17-0145	17-0216	17-0217
17-0146	17-0215	17-0218
17-0147	17-0214	17-0219



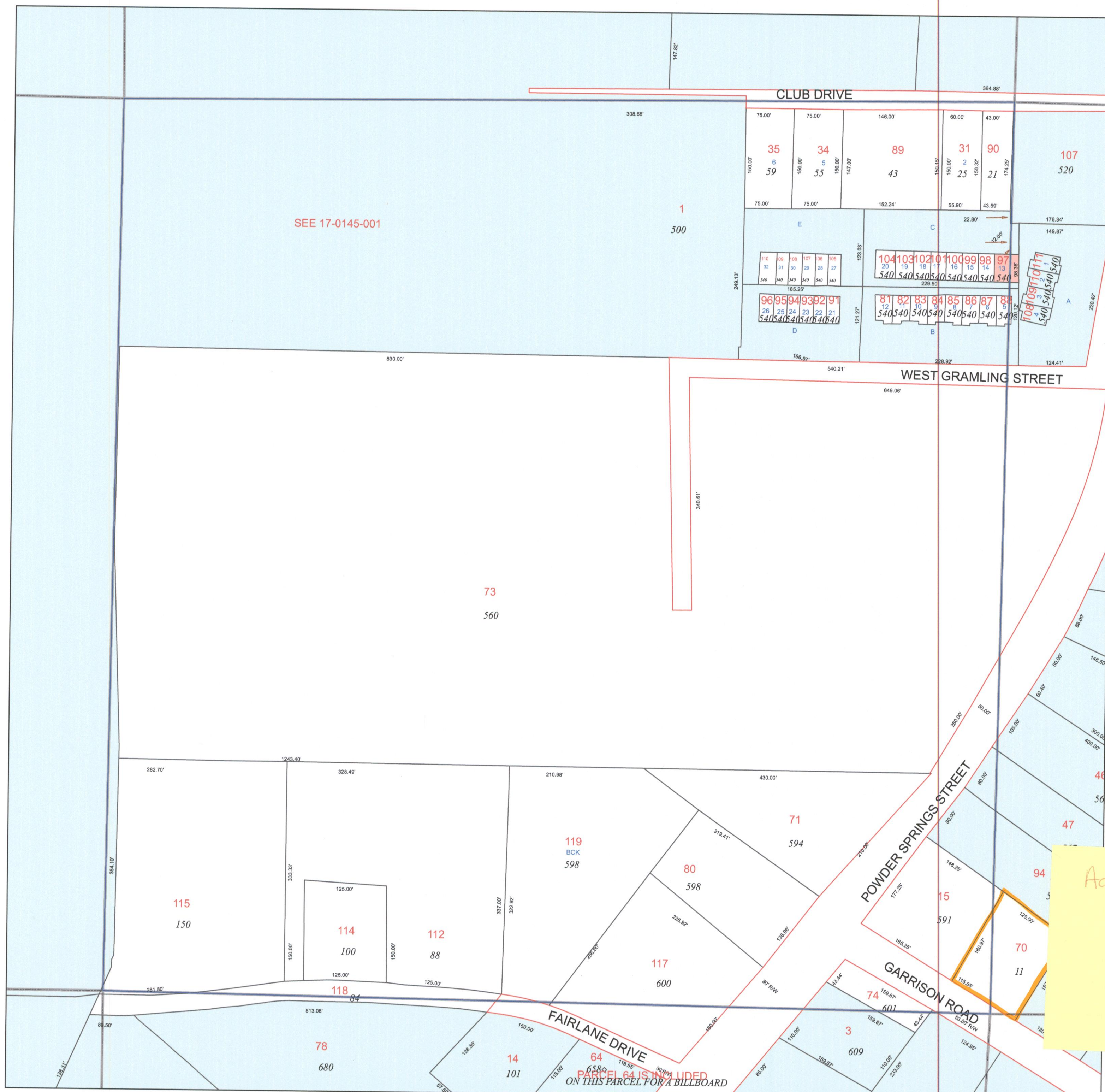
1 = 100 Feet



DISCLAIMER NOTE: This map is prepared for the inventory of real property found within this jurisdiction and is compiled from aerial photography, recorded deeds, plats, and other imagery, data and public records. Users of this map are hereby notified that the aforementioned primary public information sources should be consulted for verification of the information contained on this map. This jurisdiction, and the mapping companies involved in preparing it, assume no legal responsibilities for the information contained on this map.

Coordinate System based on Georgia State Plane System.
West Zone - NAD83

*Address Change
parcel 11*



GIS Department
200 Lawrence Street - Marietta, Georgia 30060

www.mariettaga.gov