

TAX MAP

17-0288

Plot Date: February 18, 2010

Legend

- Parcel Lines
- Creek Parcel Lines
- City Limit Lines
- ROW Lines
- School Tax Exempt
- Parcels Inside Landlot
- Parcels Outside Landlot
- Cobb County Parcels
- Unidentified Parcels

Reference Area:

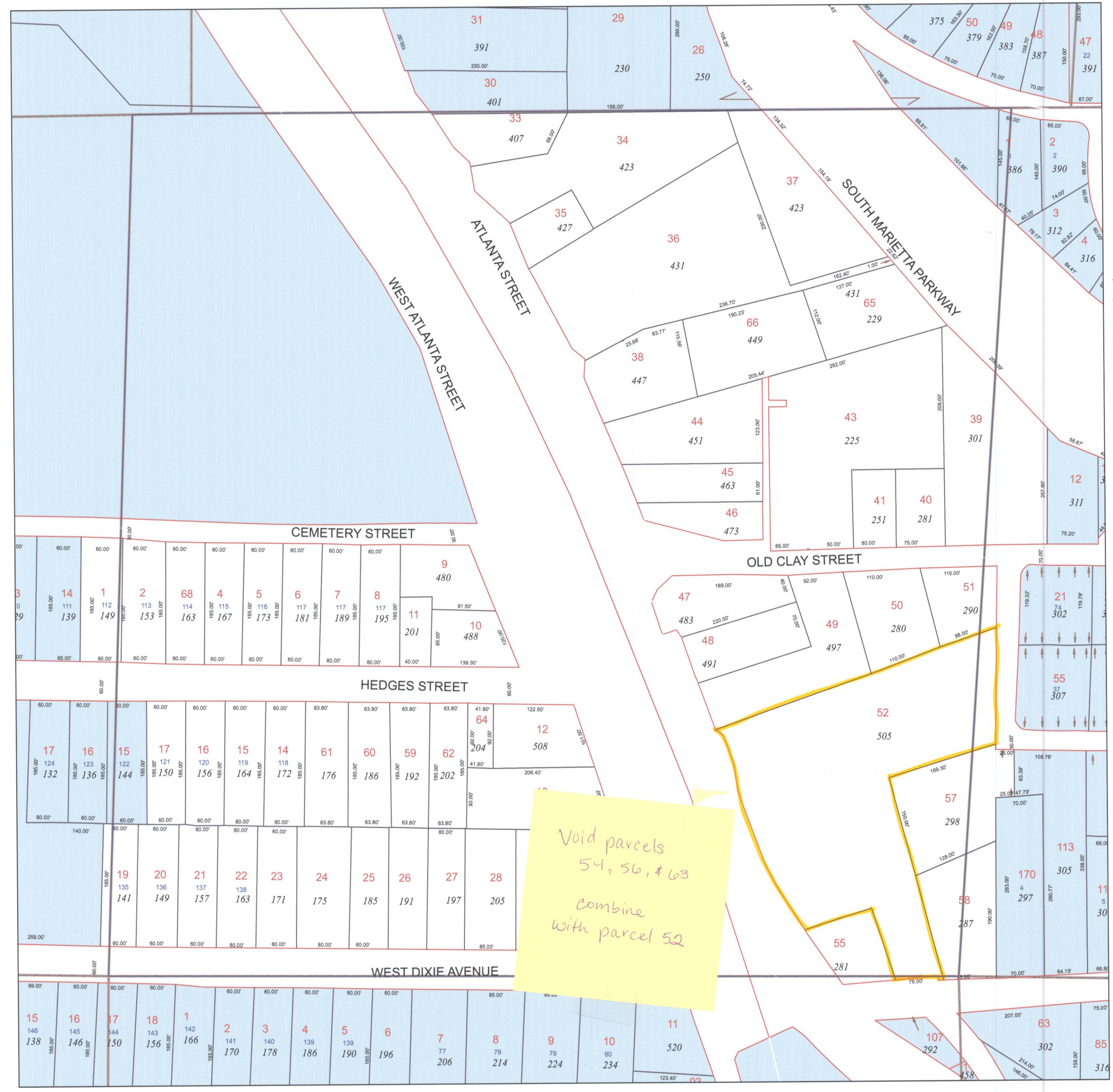
16-1290	16-1289	16-1288
17-0217	17-0288	17-0289
17-0218	17-0287	17-0290



DISCLAIMER NOTE: This map is prepared for the inventory of real property found within this jurisdiction and is compiled from aerial photography, recorded deeds, plats, and other imagery, data and public records. Users of this map are hereby notified that the aforementioned primary public information sources should be consulted for verification of the information contained on this map. This jurisdiction, and the mapping companies involved in preparing it, assume no legal responsibilities for the information contained on this map.

Coordinate System based on Georgia State Plane System.
West Zone - NAD83

CITY OF Marietta GEORGIA
GIS Department
205 Lawrence Street - Marietta, Georgia 30060
www.mariettaga.gov



*Void parcels
54, 56, & 63
combine
with parcel 52*

X