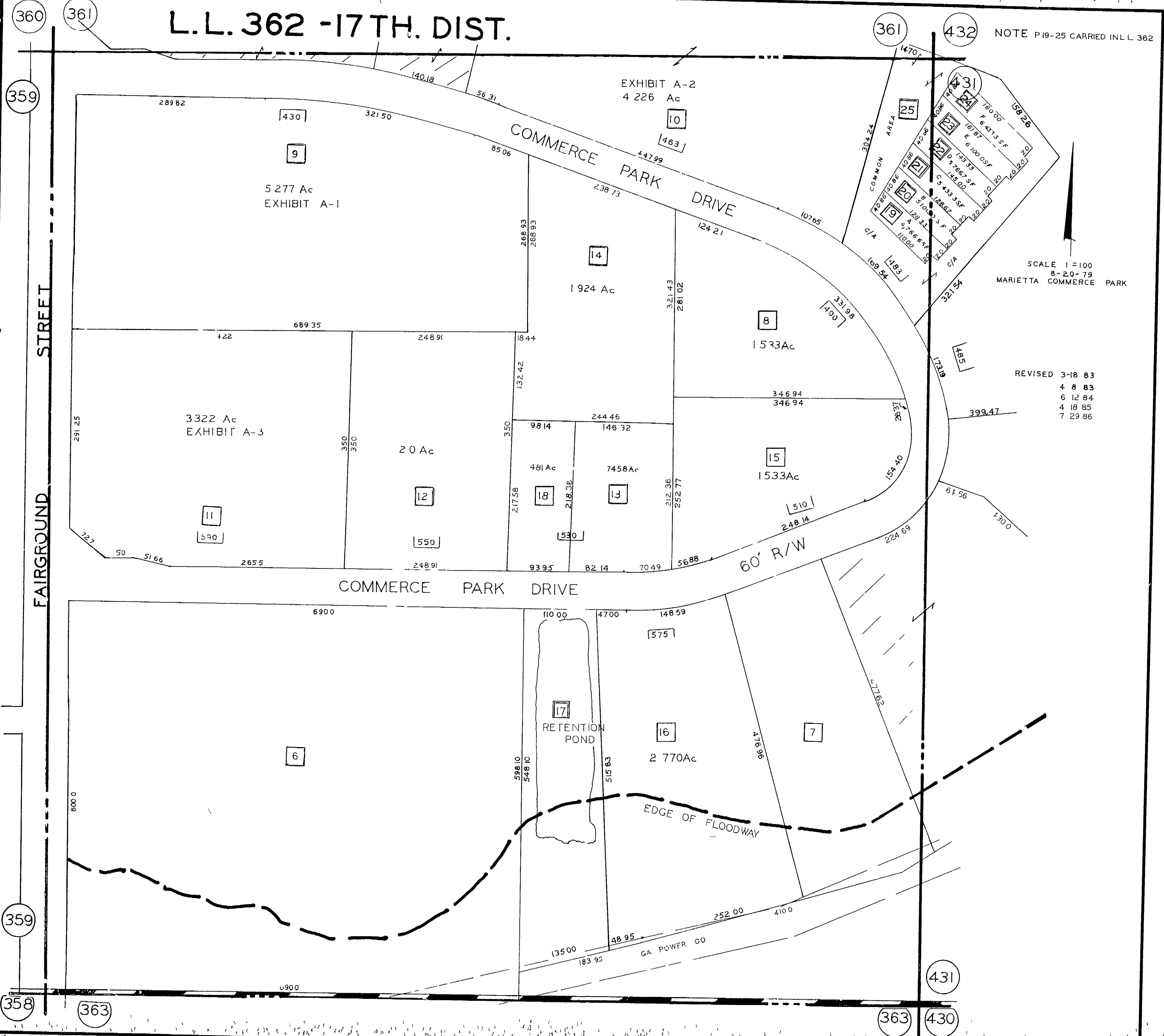


L.L. 362 -17 TH. DIST.

NOTE P 19-25 CARRIED IN L L 362



SCALE 1"=100'
8-20-79
MARIETTA COMMERCE PARK

REVISED 3-18 83
4 8 83
6 12 84
4 18 85
7 29 86

FAIRGROUND STREET

COMMERCE PARK DRIVE

COMMERCE PARK DRIVE

60' R/W

RETENTION POND

EDGE OF FLOODWAY

GA POWER CO

360

361

359

361

432

359

358

363

431

363

430