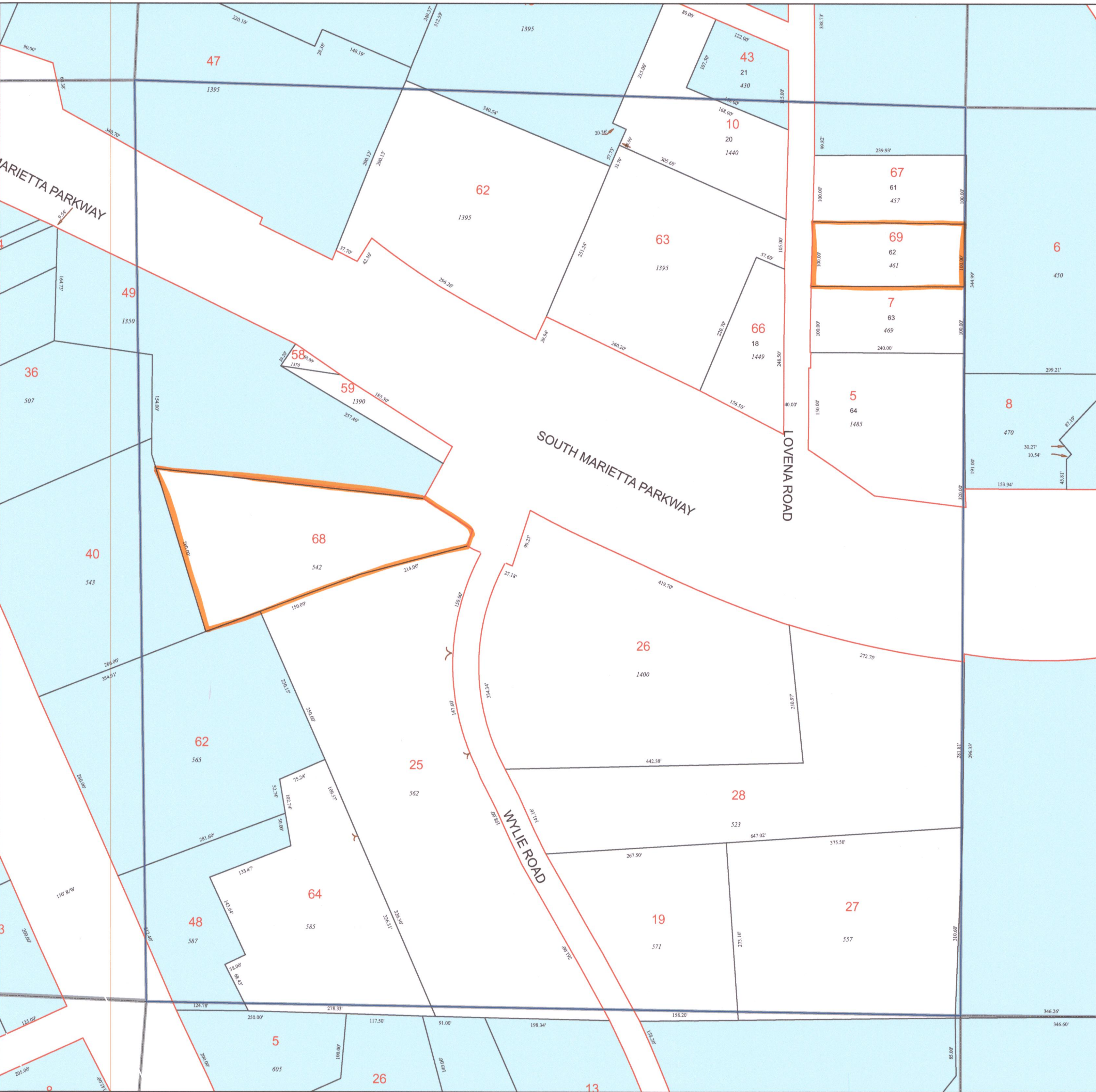


TAX MAP

17-0575

Plot Date: March 24, 2008



Legend

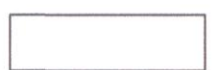
- Parcel Lines
- Creek Parcel Lines
- City Limit Lines
- ROW Lines
- School Tax Exempt
- Parcels Inside Landlot
- 25 Parcel
- 15 Lot
- 1530 Address
- Parcels Outside Landlot
- Cobb County Parcels
- Unidentified Parcels

Reference Area:

17-0505	17-0576	17-0577
17-0506	17-0575	17-0578
17-0507	17-0574	17-0579



1 = 100 Feet



DISCLAIMER NOTE: This map is prepared for the inventory of real property found within this jurisdiction and is compiled from aerial photography, recorded deeds, plats, and other imagery, data and public records. Users of this map are hereby notified that the aforementioned primary public information sources should be consulted for verification of the information contained on this map. This jurisdiction, and the mapping companies involved in preparing it, assume no legal responsibilities for the information contained on this map.

Coordinate System based on Georgia State Plane System. West Zone - NAD83

CITY OF
Marietta
GEORGIA

GIS Department
205 Lawrence Street - Marietta, Georgia 30060
www.mariettaga.gov