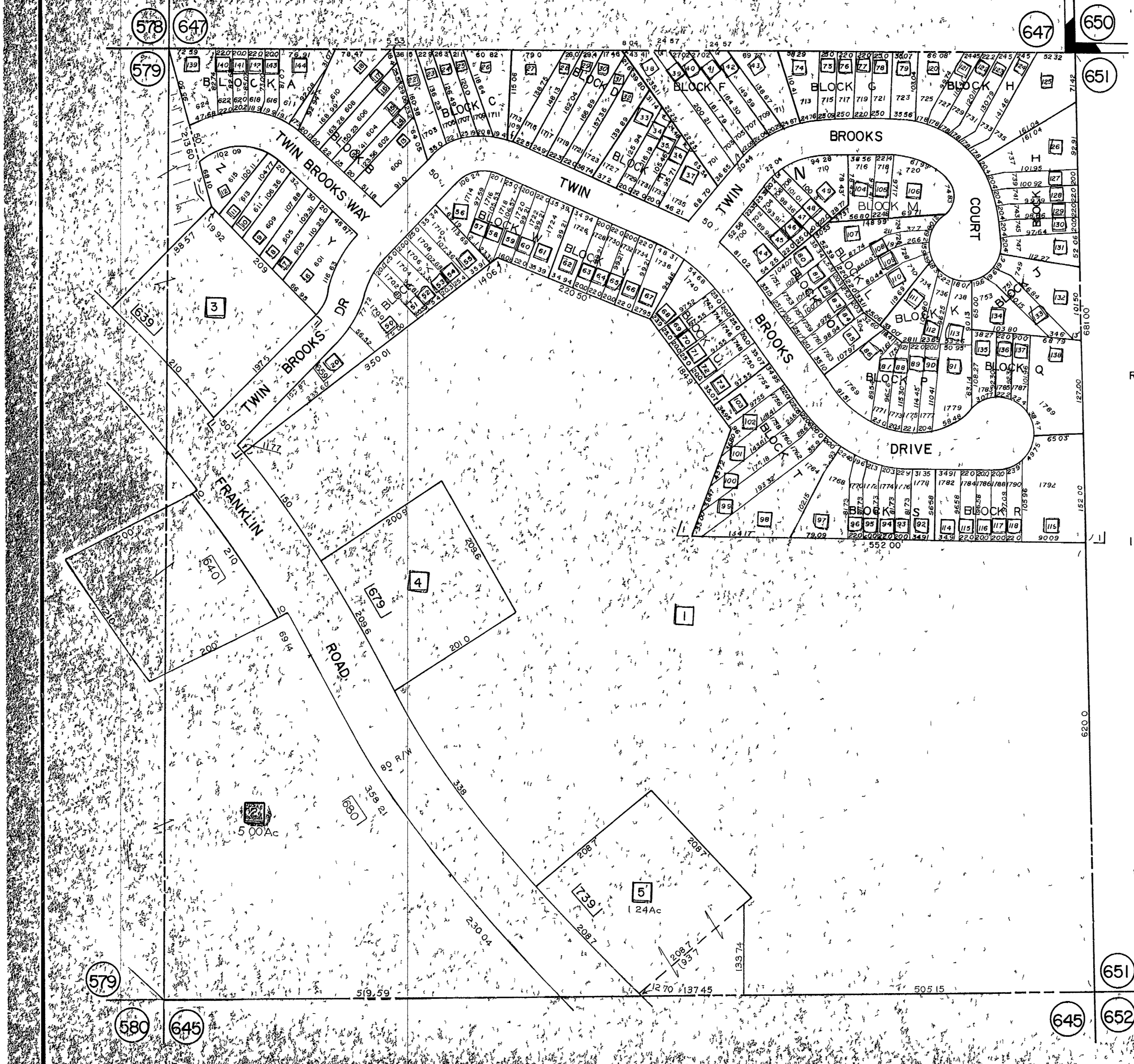


L.L. 646-17



1" = 100'

- TRACED 7-23-82
 - REVISED 11-18-82
 - 4-13-83
 - 6-15-83
 - 10-27-83
 - 3-8-84
 - 3-20-84
 - 6-4-84
 - 11-6-84
 - 12-4-84
 - 3-27-89**
 - 6-28-90
 - 8-7-90
- I - TWIN BROOKS

- REVISED 10-23-91
- 8-12-92
- 8-11-93
- 9-23-93
- ~~8-27-94~~