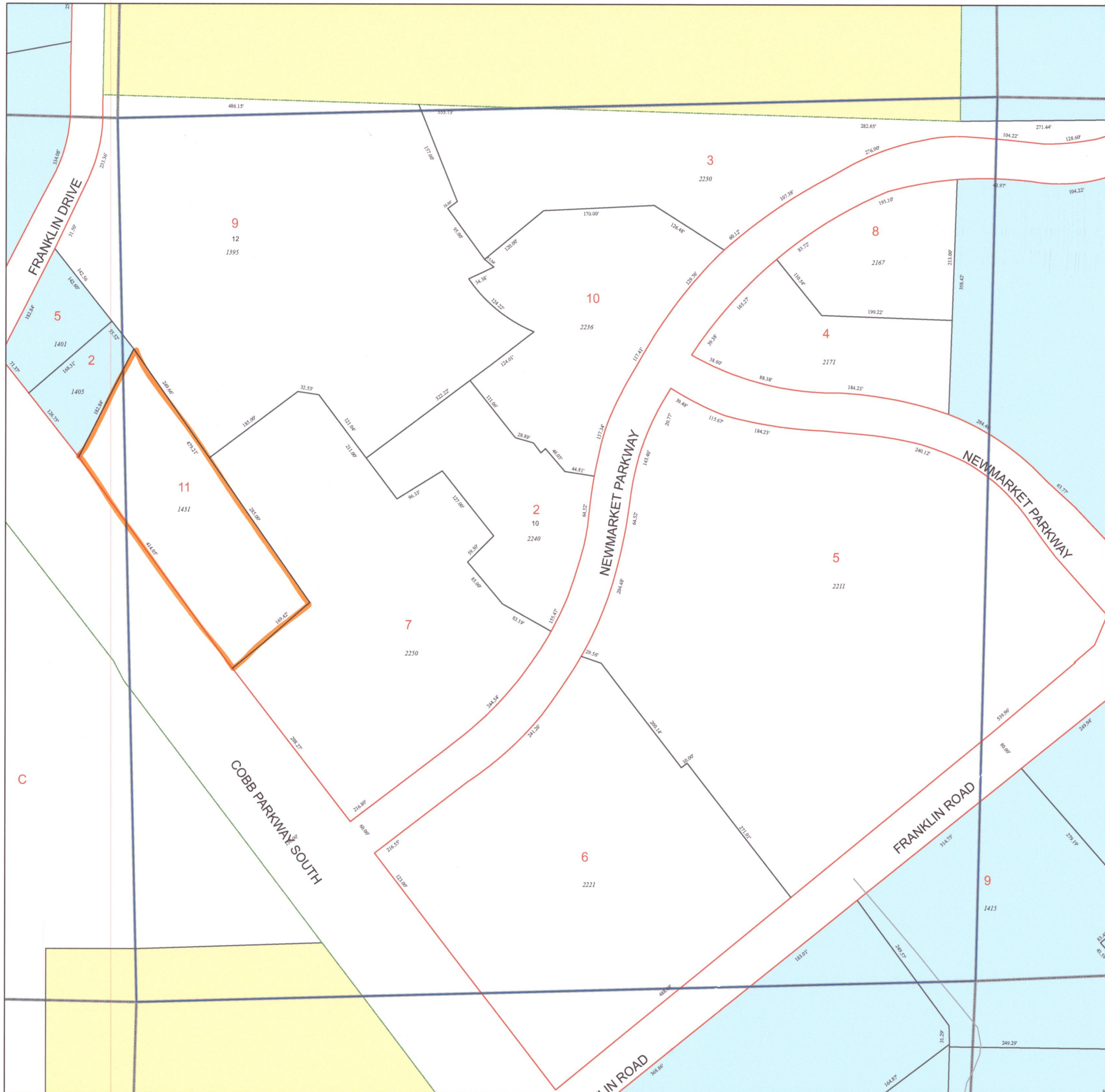


# TAX MAP

## 17-0656

Plot Date: March 24, 2008

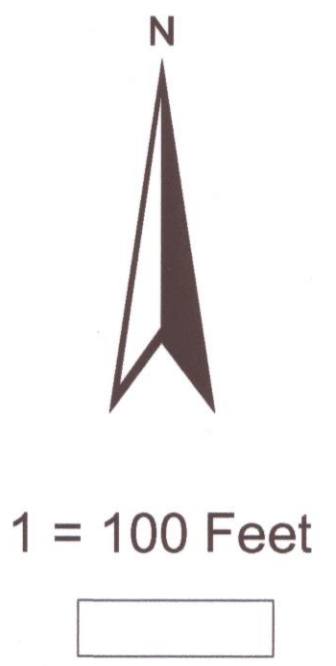


**Legend**

- Parcel Lines
- Creek Parcel Lines
- City Limit Lines
- ROW Lines
- School Tax Exempt
- Parcels Inside Landlot
- 25 Parcel 15 Lot 1530 Address
- Parcels Outside Landlot
- Cobb County Parcels
- Unidentified Parcels

Reference Area:

17-0642	17-0655	17-0714
17-0641	17-0656	17-0713
17-0640	17-0657	17-0712



**DISCLAIMER NOTE:** This map is prepared for the inventory of real property found within this jurisdiction and is compiled from aerial photography, recorded deeds, plats, and other imagery, data and public records. Users of this map are hereby notified that the aforementioned primary public information sources should be consulted for verification of the information contained on this map. This jurisdiction, and the mapping companies involved in preparing it, assume no legal responsibilities for the information contained on this map.

Coordinate System based on Georgia State Plane System. West Zone - NAD83

**CITY OF Marietta GEORGIA**

GIS Department  
 205 Lawrence Street - Marietta, Georgia 30060  
[www.marietta.gov](http://www.marietta.gov)