

# TAX MAP 17-0660

Plot Date: March 15, 2010

### Legend

- Parcel Lines
- Creek Parcel Lines
- City Limit Lines
- ROW Lines
- 🚫 School Tax Exempt
- ▭ Parcels Inside Landlot
- ▭ Parcels Outside Landlot
- ▭ Cobb County Parcels
- ▭ Unidentified Parcels

### Reference Area:

17-0638	17-0659	17-0710
17-0637	17-0660	17-0709
17-0636	17-0661	17-0708



1 = 100 Feet

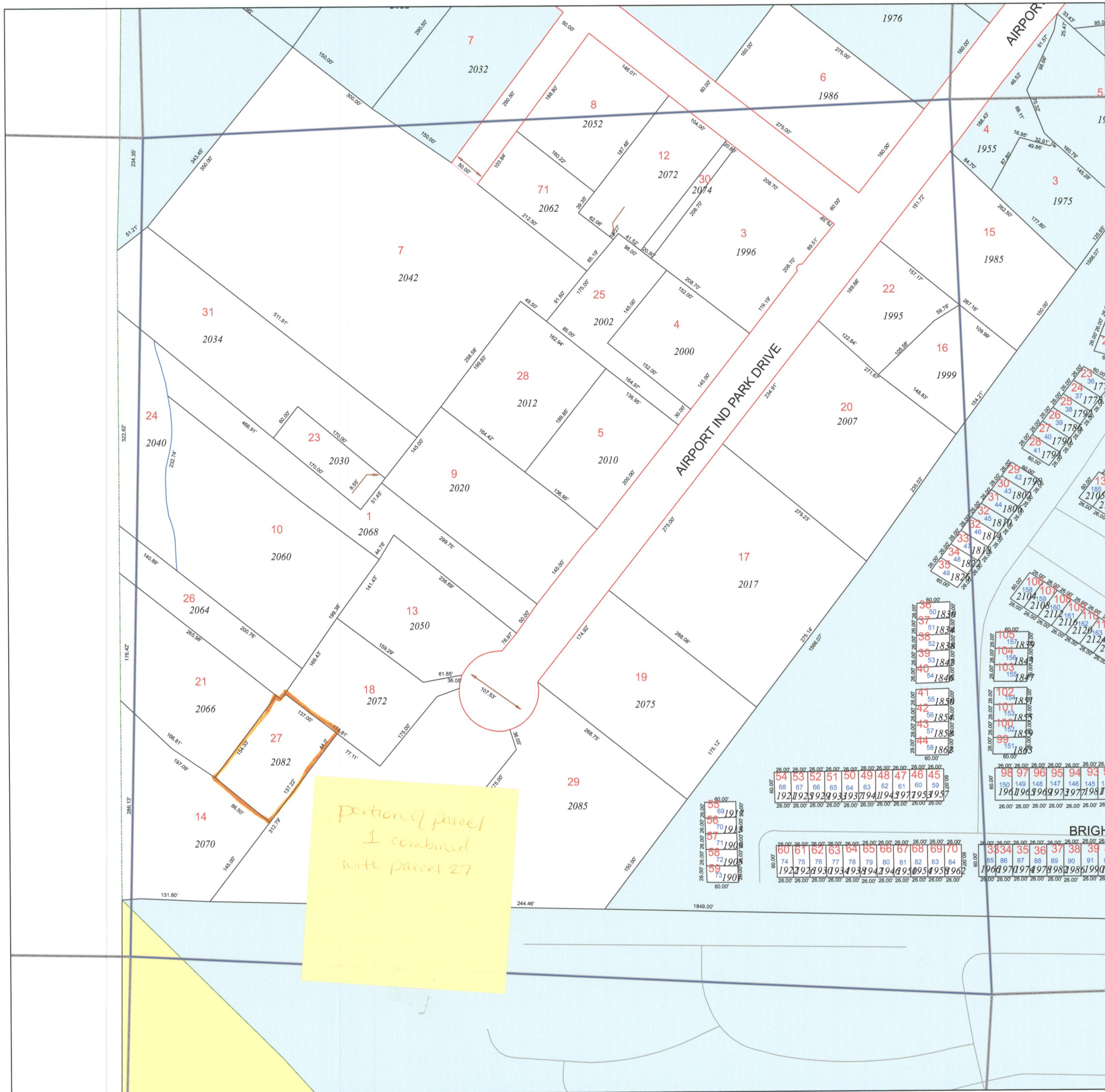


DISCLAIMER NOTE: This map is prepared for the inventory of real property found within this jurisdiction and is compiled from aerial photography, recorded deeds, plats, and other imagery, data and public records. Users of this map are hereby notified that the aforementioned primary public information sources should be consulted for verification of the information contained on this map. This jurisdiction, and the mapping companies involved in preparing it, assume no legal responsibilities for the information contained on this map.

Coordinate System based on Georgia State Plane System.  
West Zone - NAD83



GIS Department  
205 Lawrence Street - Marietta, Georgia 30060  
[www.mariettaga.gov](http://www.mariettaga.gov)



portion of parcel  
1 combined  
with parcel 27