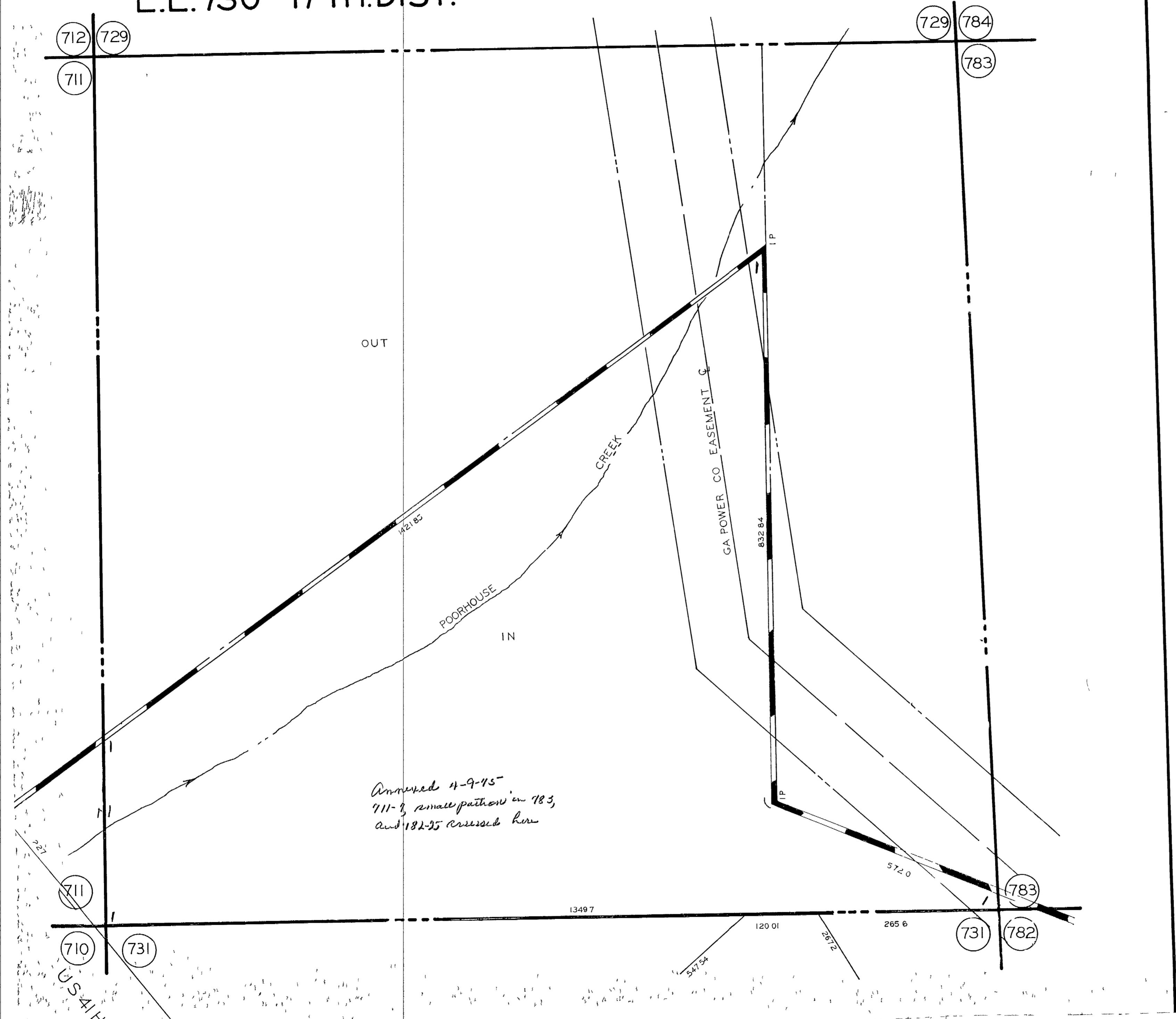


L.L. 730 17TH.DIST.



712 729
711

729 784
783

OUT

POORHOUSE
IN

CREEK

GA POWER CO EASEMENT

*Annexed 4-9-15
711-2, small portions in 783,
and 182-35 crossed here*

711
710 731

783
731 782

U.S. 41 H.

1349.7

120.01

572.0

265.6

547.54

257.2

I.P.

I.P.

1421.82

832.84