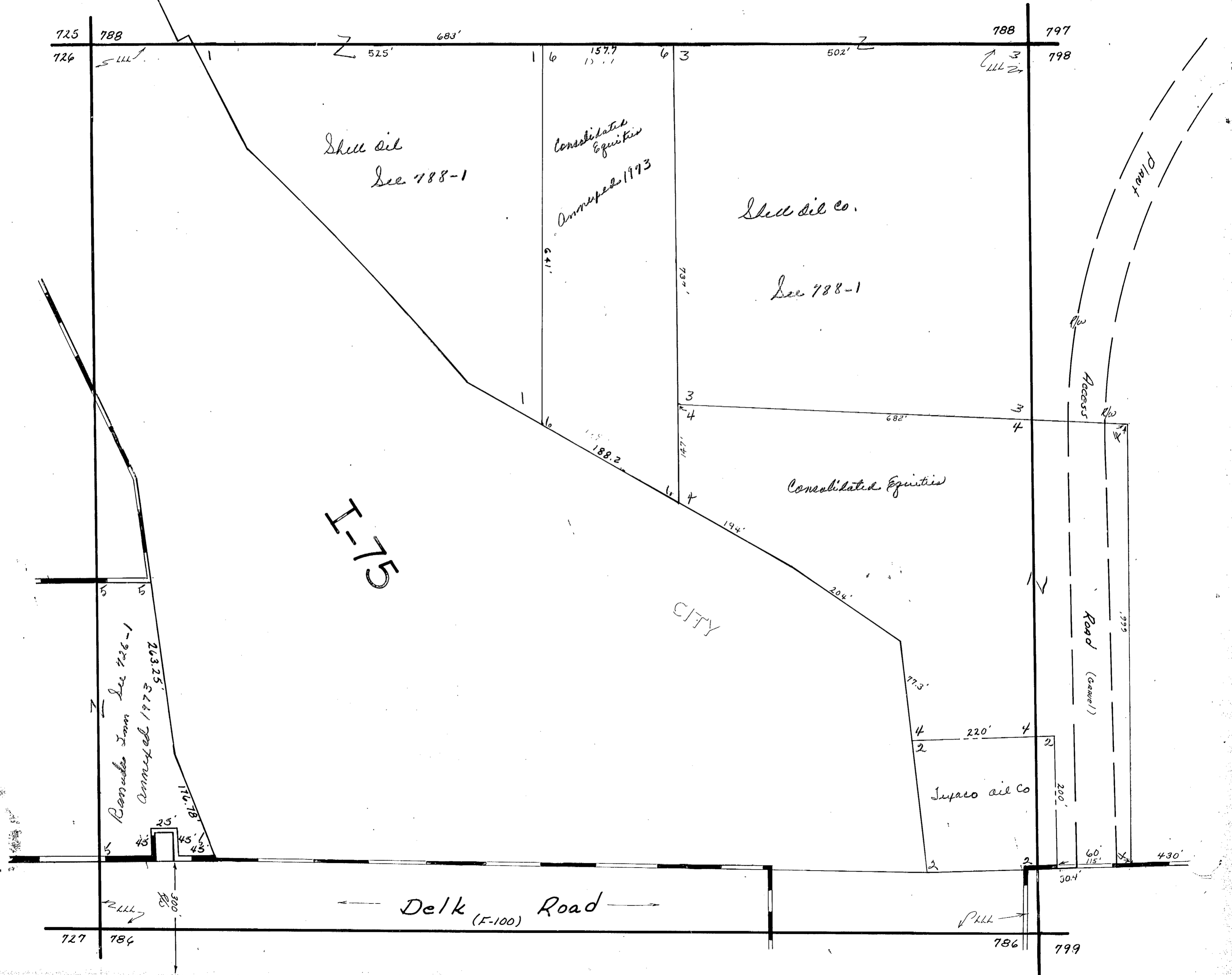


L.L. 787-17



I-75

CITY

Delk (F-100) Road

Revised from See 726-1  
Annexed 1973  
263.25'

Steel oil  
See 788-1

Consolidated  
Equities  
Annexed 1973

Steel oil co.  
See 788-1

Consolidated Equities

Supaco oil Co

Road (General)

Access

Plant

PHL